



*Creating Excellence*

Showbox Sires' genetic lineup is rooted in Excellent cow families with generations of show winnings and history-making dams. Create cattle with the style to compete at any level by leveraging this impressive group of sires. Contact your local representative to order.

L-R: S-S-I Doc Have Not 8784-ET (EX-96-EX-MS-DOM), dam of HELLION, IMAGE, HENDRIX and HERITAGE-P\*RC; Luck-E Doc Azacaboom-ET (EX-92-EX-MS), dam of ACETYLENE-RED; Peace&Plenty Doc Jubie16-ET (EX-95-EX-MS), dam of JINX; Kingsway Caught A Vibe (VG-87-VG-MS), dam of VENMO; ACETYLENE-RED, Thomas photo; HELLION, Thomas photo; IMAGE, Jordan photo; JINX, Thomas photo;

**VENMO**



**WORLD WIDE SIRES**

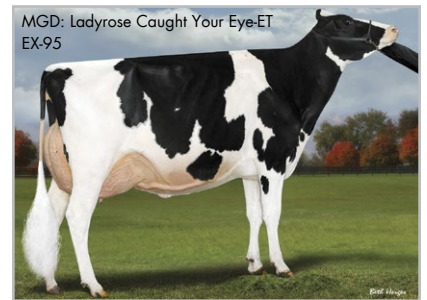
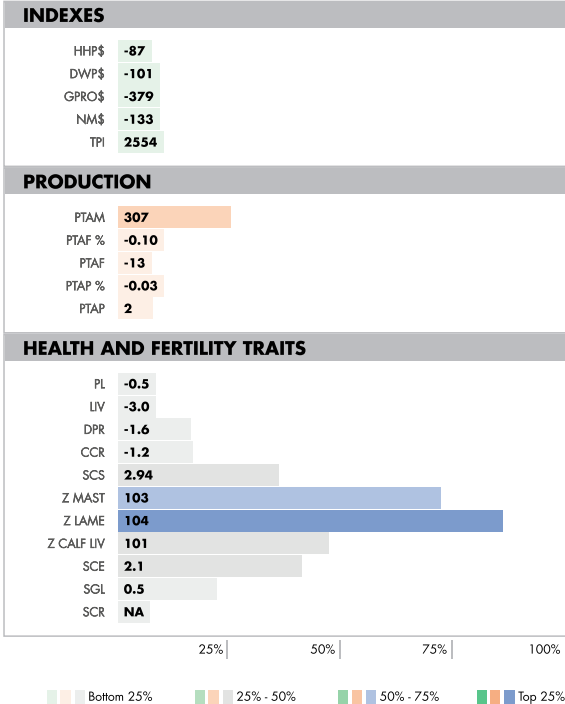
(03) 5831 5559 • info@wvsaustralia.com  
www.wvsaustralia.com

744HO17769 **KINGSWAY VENMO**

**DELTA-LAMBDA X ALLIGATOR X UNIX** TR TP TM TC TY TV TL TD TE HH1T HH2T HH3T HH4T HH5T HH6T

**HOLSTEIN** **NASIS:** 70FFW74 **BETA CASEIN:** A1A2 **\$38 RRP** **\$80 SEXED**

DAM: **KINGSWAY CAUGHT A VIBE VG-87**  
1-10 2X 341D 13426 KGM 4.7% 632 KGF 3.4% 462 KGP  
MGD: **LADYROSE CAUGHT YOUR EYE-ET EX-95**  
4-03 2X 365D 18579 KGM 4.2% 785 KGF 3.2% 596 KGP



**PHYSICAL TRAIT EVALUATION**

PTAT: 2.59 UDC: 1.89 FLC: 1.54 TPI: 2554

GUSA-HA 04-25  
0 dtrs. 0 herds  
80% Rel.

|                      |              |       |             |
|----------------------|--------------|-------|-------------|
| Stature              | Short        | 1.91  | Tall        |
| Strength             | Frail        | 1.10  | Strong      |
| Body Depth           | Shallow      | 1.42  | Deep        |
| Dairy Form           | Tight Ribbed | 1.23  | Open Ribbed |
| Rump Width           | Narrow       | 1.64  | Wide        |
| Rump Angle           | High Pins    | 0.13  | Sloped      |
| Rear Leg (side view) | Posty        | 0.42  | Sickled     |
| Rear Leg (rear view) | Hock-in      | 1.89  | Straight    |
| Foot Angle           | Low Angle    | 1.99  | Steep Angle |
| Feet & Leg Score     | Low          | 1.81  | High        |
| Fore Udder           | Loose        | 2.14  | Strong      |
| Rear Udder Height    | Low          | 2.68  | High        |
| Rear Udder Width     | Narrow       | 2.55  | Wide        |
| Udder Cleft          | Weak         | 1.88  | Strong      |
| Udder Depth          | Deep         | 1.73  | Shallow     |
| Front Teat Placement | Wide         | 0.97  | Close       |
| Rear Teat Placement  | Wide         | 1.17  | Close       |
| Teat Length          | Short        | -0.26 | Long        |



GUSA 04-25  
CDN Genomic  
Eval. 04-25  
Zoetis 04-25

# ACETYLENE-RED



744HO17076 LUCK-E ACETYLENE-RED-ET

**ROMPEN-RED X DOC X MCGUCCI** TP TM TC TY TV TL TD TE HH1T HH2T HH3T HH4T HH5T HH6T

**HOLSTEIN** NASIS: 70FFW74 BETA CASEIN: A1A2 \$36 RRP \$75 SEXED

BPI: 210 OT: 105 MS: 110 MILKING SPEED: 102 TEMP: 102

DAM: LUCK-E DOC AZACABOOM-ET EX-92  
3-09 2X 365D 17672 KGM 5.0% 885 KGF 3.3% 583 KGP

MGD: LUCK-E MCGUCCI AFRO-RED-ET EX-94  
4-07 2X 365D 16615 KGM 5.6% 932 KGF 3.5% 577 KGP

## INDEXES

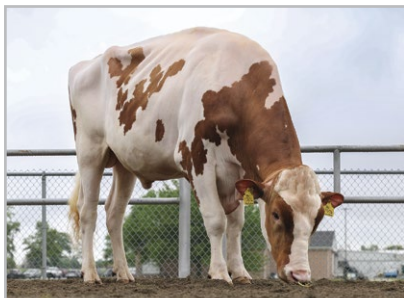
HHP\$ -96  
NM\$ -68  
TPI 2612  
BPI 210

## PRODUCTION

PTAM 200  
PTAF % 0.01  
PTAF 12  
PTAP % 0.01  
PTAP 10

## HEALTH AND FERTILITY TRAITS

PL -0.7  
LIV -2.8  
DPR -2.8  
CCR -4.4  
SCS 3.10  
SCE 2.3  
SGL 1.0  
SCR -7.6



## PHYSICAL TRAIT EVALUATION

PTAT: 2.89 UDC: 1.66 FLC: 1.99 TPI: 2612

GUSA-HA 04-25  
0 dtrs. 0 herds  
81% Rel.

|                      |              |       |             |
|----------------------|--------------|-------|-------------|
| Stature              | Short        | 2.25  | Tall        |
| Strength             | Frail        | 1.58  | Strong      |
| Body Depth           | Shallow      | 2.02  | Deep        |
| Dairy Form           | Tight Ribbed | 1.87  | Open Ribbed |
| Rump Width           | Narrow       | 1.21  | Wide        |
| Rump Angle           | High Pins    | -0.38 | Sloped      |
| Rear Leg (side view) | Posty        | 0.42  | Sickled     |
| Rear Leg (rear view) | Hock-in      | 2.64  | Straight    |
| Foot Angle           | Low Angle    | 2.00  | Steep Angle |
| Feet & Leg Score     | Low          | 2.25  | High        |
| Fore Udder           | Loose        | 1.84  | Strong      |
| Rear Udder Height    | Low          | 2.91  | High        |
| Rear Udder Width     | Narrow       | 2.34  | Wide        |
| Udder Cleft          | Weak         | 1.46  | Strong      |
| Udder Depth          | Deep         | 1.39  | Shallow     |
| Front Teat Placement | Wide         | 1.33  | Close       |
| Rear Teat Placement  | Wide         | 1.39  | Close       |
| Teat Length          | Short        | -0.43 | Long        |



GUSA 04-25  
CDN Genomic  
Eval. 04-25  
Zoetis 04-25

# ASHER-RED



744HO17546 HILROSE ALTUDE ASHER-RED-ET

**ALTITUDE-RED X ADVENT-RED X RUBENS-RC** TP TM TC TY TV TL TD TE HH1T HH2T HH3T HH4T HH5T HH6T

**HOLSTEIN** NASIS: 80FFUJK BETA CASEIN: A1A2 \$36 RRP \$75 SEXED

BPI: 153 OT: 104 MS: 107 MILKING SPEED: 102 TEMP: 102

DAM: HILROSE ADVENT ANNA-RED-ET EX-95  
8-03 2X 365D 20525 KGM 4.9% 1010 KGF 3.2% 647 KGP

MGD: HILROSE RUBENS ASHLYN EX-91  
4-06 2X 365D 16007 KGM 3.5% 555 KGF 3.1% 498 KGP

## INDEXES

HHP\$ -370  
DWPP\$ -529  
GPRO\$ -205  
NM\$ -532  
TPI 2194  
BPI 153

## PRODUCTION

PTAM -1615  
PTAF % 0.14  
PTAF -32  
PTAP % 0.08  
PTAP -32

## HEALTH AND FERTILITY TRAITS

PL -1.2  
LIV -1.7  
DPR 0.0  
CCR -1.8  
SCS 2.98  
Z MAST 107  
Z LAME 89  
Z CALF LIV 100  
SCE 3.6  
SGL 2.8  
SCR NA



## PHYSICAL TRAIT EVALUATION

PTAT: 2.46 UDC: 1.41 FLC: 1.14 TPI: 2194

GUSA-HA 04-25  
0 dtrs. 0 herds  
82% Rel.

|                      |              |       |             |
|----------------------|--------------|-------|-------------|
| Stature              | Short        | 2.98  | Tall        |
| Strength             | Frail        | 1.44  | Strong      |
| Body Depth           | Shallow      | 1.66  | Deep        |
| Dairy Form           | Tight Ribbed | 0.66  | Open Ribbed |
| Rump Width           | Narrow       | 1.92  | Wide        |
| Rump Angle           | High Pins    | -0.52 | Sloped      |
| Rear Leg (side view) | Posty        | 0.58  | Sickled     |
| Rear Leg (rear view) | Hock-in      | 1.65  | Straight    |
| Foot Angle           | Low Angle    | 1.61  | Steep Angle |
| Feet & Leg Score     | Low          | 1.71  | High        |
| Fore Udder           | Loose        | 2.32  | Strong      |
| Rear Udder Height    | Low          | 2.59  | High        |
| Rear Udder Width     | Narrow       | 1.94  | Wide        |
| Udder Cleft          | Weak         | 0.63  | Strong      |
| Udder Depth          | Deep         | 2.23  | Shallow     |
| Front Teat Placement | Wide         | -0.11 | Close       |
| Rear Teat Placement  | Wide         | -0.12 | Close       |
| Teat Length          | Short        | 0.26  | Long        |



GUSA 04-25  
CDN Genomic  
Eval. 04-25  
Zoetis 04-25

# FLASH



744HO17043 MR TATOO FLASH-ET **A2A2**

**TATOO X SOLOMON X BRAXTON** TR TP TM TC TY TV TL TD TE HH1T HH2T HH3T HH4T HH5T HH6T

**HOLSTEIN** NASIS: 80FFWFZ BETA CASEIN: A2A2 \$38 RRP \$75 SEXED

BPI: 135 OT: 105 MS: 110 MILKING SPEED: 102 TEMP: 103

DAM: OAKFIELD SOLOM FOOTLOOSE-ET EX-97  
5-03 2X 300D 11703 KGM 4.2% 487 KGF 3.0% 356 KGP

MGD: DUCKETT-SA BRAXTN FRISCO-ET EX-94  
5-01 3X 365D 14851 KGM 3.3% 497 KGF 2.8% 409 KGP

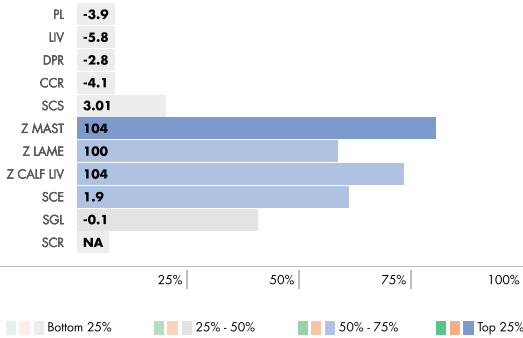
## INDEXES

HHP\$ -771  
DWP\$ -819  
GPRO\$ -718  
NM\$ -726  
TPI 1919  
BPI 135

## PRODUCTION

PTAM -969  
PTAF % -0.04  
PTAF -49  
PTAP % -0.04  
PTAP -42

## HEALTH AND FERTILITY TRAITS



## PHYSICAL TRAIT EVALUATION

PTAT: 2.45 UDC: 1.59 FLC: 0.67 TPI: 1919

GUSA-HA 04-25  
0 dtrs. 0 herds  
81% Rel.

|                      |              |      |             |
|----------------------|--------------|------|-------------|
| Stature              | Short        | 2.58 | Tall        |
| Strength             | Frail        | 1.11 | Strong      |
| Body Depth           | Shallow      | 2.06 | Deep        |
| Dairy Form           | Tight Ribbed | 2.17 | Open Ribbed |
| Rump Width           | Narrow       | 2.94 | Wide        |
| Rump Angle           | High Pins    | 1.02 | Sloped      |
| Rear Leg (side view) | Posty        | 2.14 | Sickled     |
| Rear Leg (rear view) | Hock-in      | 0.48 | Straight    |
| Foot Angle           | Low Angle    | 1.29 | Steep Angle |
| Feet & Leg Score     | Low          | 1.46 | High        |
| Fore Udder           | Loose        | 2.65 | Strong      |
| Rear Udder Height    | Low          | 1.91 | High        |
| Rear Udder Width     | Narrow       | 1.93 | Wide        |
| Udder Cleft          | Weak         | 2.49 | Strong      |
| Udder Depth          | Deep         | 1.97 | Shallow     |
| Front Teat Placement | Wide         | 1.43 | Close       |
| Rear Teat Placement  | Wide         | 1.80 | Close       |
| Teat Length          | Short        | 0.69 | Long        |



GUSA 04-25  
CDN Genomic  
Evol. 04-25  
Zoetis 04-25

# HAZARD-PP



744HO17073 MR LUSTER HAZARD-PP-ET **A2A2**

**LUSTER-P X MIRAND X HOTLINE** TR PP TM TC TY TV TL TD TE HH1T HH2T HH3T HH4T HH5T HH6T

**HOLSTEIN** NASIS: 80FFWGA BETA CASEIN: A2A2 \$36 RRP \$75 SEXED

BPI: 257 OT: 104 MS: 106 MILKING SPEED: 104 TEMP: 102

DAM: VOGUE MIRAND HANAIE-P EX-93

MGD: PEAK HAWAII HTLN 80660-ET VG-85  
4-09 2X 365D 14251 KGM 4.7% 669 KGF 3.7% 530 KGP

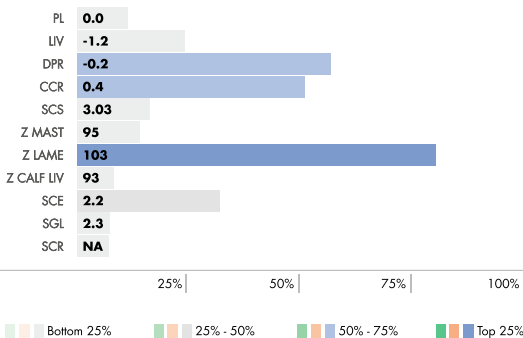
## INDEXES

HHP\$ 53  
DWP\$ -30  
GPRO\$ -237  
NM\$ 104  
TPI 2672  
BPI 257

## PRODUCTION

PTAM 513  
PTAF % -0.02  
PTAF 17  
PTAP % -0.05  
PTAP 4

## HEALTH AND FERTILITY TRAITS



## PHYSICAL TRAIT EVALUATION

PTAT: 1.47 UDC: 0.96 FLC: 1.17 TPI: 2672

GUSA-HA 04-25  
0 dtrs. 0 herds  
81% Rel.

|                      |              |       |             |
|----------------------|--------------|-------|-------------|
| Stature              | Short        | 1.35  | Tall        |
| Strength             | Frail        | 0.46  | Strong      |
| Body Depth           | Shallow      | 0.92  | Deep        |
| Dairy Form           | Tight Ribbed | 1.14  | Open Ribbed |
| Rump Width           | Narrow       | 1.17  | Wide        |
| Rump Angle           | High Pins    | -0.86 | Sloped      |
| Rear Leg (side view) | Posty        | 0.88  | Sickled     |
| Rear Leg (rear view) | Hock-in      | 1.81  | Straight    |
| Foot Angle           | Low Angle    | 0.79  | Steep Angle |
| Feet & Leg Score     | Low          | 1.31  | High        |
| Fore Udder           | Loose        | 1.33  | Strong      |
| Rear Udder Height    | Low          | 1.74  | High        |
| Rear Udder Width     | Narrow       | 1.71  | Wide        |
| Udder Cleft          | Weak         | 0.50  | Strong      |
| Udder Depth          | Deep         | 0.64  | Shallow     |
| Front Teat Placement | Wide         | 0.21  | Close       |
| Rear Teat Placement  | Wide         | 0.36  | Close       |
| Teat Length          | Short        | 0.72  | Long        |



GUSA 04-25  
CDN Genomic  
Evol. 04-25  
Zoetis 04-25

# HELLION



744HO17425 HAVEITALL DROPBX HELLION-ET **A2A2**

**DROPBOX X DOC X JEDI** TR TP TM TC TY TV TL TD TE HH1T HH2T HH3T HH4T HH5T HH6T

**HOLSTEIN** NASIS: 80FFUBY BETA CASEIN: A2A2 \$38 RRP \$80 SEXED

BPI: 259 OT: 102 MS: 105 MILKING SPEED: 99 TEMP: 101

DAM: S-SI DOC HAVE NOT 8784-ET EX-96  
4-05 2X 320D 16180 KGM 3.9% 637 KGF 3.1% 497 KGP  
MGD: FLY-HIGHER JEDI HAVENOT-ET VG-86  
4-07 3X 365D 14256 KGM 3.1% 447 KGF 3.1% 442 KGP

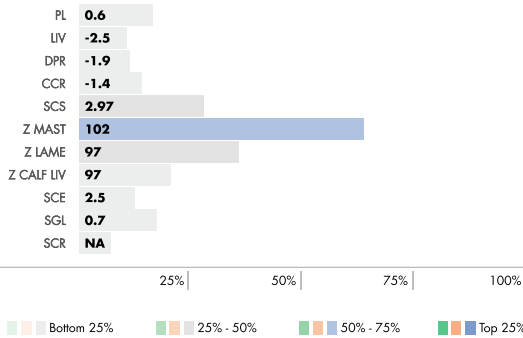
## INDEXES

|        |      |
|--------|------|
| HHP\$  | 336  |
| DWP\$  | 165  |
| GPRO\$ | -306 |
| NM\$   | 244  |
| TPI    | 2944 |
| BPI    | 259  |

## PRODUCTION

|        |      |
|--------|------|
| PTAM   | 927  |
| PTAF % | 0.02 |
| PTAF   | 44   |
| PTAP % | 0.01 |
| PTAP   | 32   |

## HEALTH AND FERTILITY TRAITS



## PHYSICAL TRAIT EVALUATION

PTAT: 2.74 UDC: 1.98 FLC: 0.64 TPI: 2944

GUSA-HA 04-25  
0 dtrs. 0 herds  
79% Rel.

|                      |              |       |             |
|----------------------|--------------|-------|-------------|
| Stature              | Short        | 2.75  | Tall        |
| Strength             | Frail        | 2.12  | Strong      |
| Body Depth           | Shallow      | 2.61  | Deep        |
| Dairy Form           | Tight Ribbed | 2.72  | Open Ribbed |
| Rump Width           | Narrow       | 2.74  | Wide        |
| Rump Angle           | High Pins    | 0.58  | Sloped      |
| Rear Leg (side view) | Posty        | 0.14  | Sickled     |
| Rear Leg (rear view) | Hock-in      | 0.87  | Straight    |
| Foot Angle           | Low Angle    | 1.59  | Steep Angle |
| Feet & Leg Score     | Low          | 1.23  | High        |
| Fore Udder           | Loose        | 2.66  | Strong      |
| Rear Udder Height    | Low          | 2.80  | High        |
| Rear Udder Width     | Narrow       | 3.57  | Wide        |
| Udder Cleft          | Weak         | 1.39  | Strong      |
| Udder Depth          | Deep         | 1.55  | Shallow     |
| Front Teat Placement | Wide         | 1.42  | Close       |
| Rear Teat Placement  | Wide         | 1.26  | Close       |
| Teat Length          | Short        | -0.23 | Long        |



GUSA 04-25  
CDN Genomic  
Evl. 04-25  
Zoetis 04-25

# HENDRIX



744HO16956 DUCKETT TATOO HENDRIX-ET

**TATOO X DOC X JEDI** TR TP TM TC TY TV TL TD TE HH1T HH2T HH3T HH4T HH5T HH6T

**HOLSTEIN** NASIS: 80FFUJL BETA CASEIN: A1A2 \$38 RRP \$75 SEXED

BPI: 279 OT: 107 MS: 110 MILKING SPEED: 101 TEMP: 101

DAM: S-SI DOC HAVE NOT 8784-ET EX-96  
4-05 2X 320D 16180 KGM 3.9% 637 KGF 3.1% 497 KGP  
MGD: FLY-HIGHER JEDI HAVENOT-ET VG-86  
4-07 3X 365D 14256 KGM 3.1% 447 KGF 3.1% 442 KGP

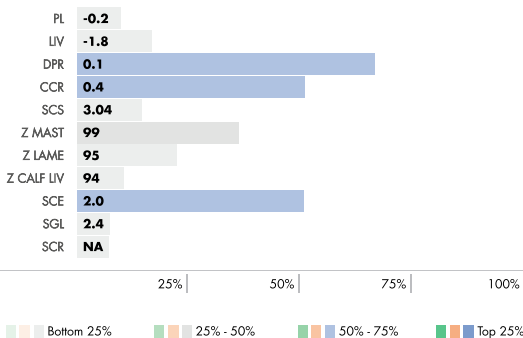
## INDEXES

|        |      |
|--------|------|
| HHP\$  | -45  |
| DWP\$  | -236 |
| GPRO\$ | -212 |
| NM\$   | -112 |
| TPI    | 2610 |
| BPI    | 279  |

## PRODUCTION

|        |       |
|--------|-------|
| PTAM   | 73    |
| PTAF % | -0.08 |
| PTAF   | -18   |
| PTAP % | 0.04  |
| PTAP   | 14    |

## HEALTH AND FERTILITY TRAITS



## PHYSICAL TRAIT EVALUATION

PTAT: 2.51 UDC: 1.67 FLC: 0.76 TPI: 2610

GUSA-HA 04-25  
0 dtrs. 0 herds  
82% Rel.

|                      |              |       |             |
|----------------------|--------------|-------|-------------|
| Stature              | Short        | 2.23  | Tall        |
| Strength             | Frail        | 1.48  | Strong      |
| Body Depth           | Shallow      | 2.08  | Deep        |
| Dairy Form           | Tight Ribbed | 2.29  | Open Ribbed |
| Rump Width           | Narrow       | 3.34  | Wide        |
| Rump Angle           | High Pins    | 0.34  | Sloped      |
| Rear Leg (side view) | Posty        | 1.19  | Sickled     |
| Rear Leg (rear view) | Hock-in      | 0.78  | Straight    |
| Foot Angle           | Low Angle    | 1.47  | Steep Angle |
| Feet & Leg Score     | Low          | 1.31  | High        |
| Fore Udder           | Loose        | 2.43  | Strong      |
| Rear Udder Height    | Low          | 2.35  | High        |
| Rear Udder Width     | Narrow       | 2.70  | Wide        |
| Udder Cleft          | Weak         | 1.27  | Strong      |
| Udder Depth          | Deep         | 1.34  | Shallow     |
| Front Teat Placement | Wide         | 1.04  | Close       |
| Rear Teat Placement  | Wide         | 1.02  | Close       |
| Teat Length          | Short        | -0.18 | Long        |



GUSA 04-25  
CDN Genomic  
Evl. 04-25  
Zoetis 04-25

# HENDRIX

# HERITAGE-P\*RC



744HO17072 DUCKETT MAX HERITAGE-P-ET **A2A2**

**MAX-PP\*RC X DOC X JEDI** RC PC TM TC TY TV TL TD TE HH1T HH2T HH3T HH4T HH5T HH6T

**HOLSTEIN** NASIS: 80FFUJH BETA CASEIN: A2A2 \$36 RRP \$80 SEXED

BPI: 203 OT: 104 MS: 107 MILKING SPEED: 104 TEMP: 101

DAM: S-S-I DOC HAVE NOT 8784-ET EX-96  
4-05 2X 320D 16180 KGM 3.9% 637 KGF 3.1% 497 KGP  
MGD: FLY-HIGHER JEDI HAVENOT-ET VG-86  
4-07 3X 365D 14256 KGM 3.1% 447 KGF 3.1% 442 KGP

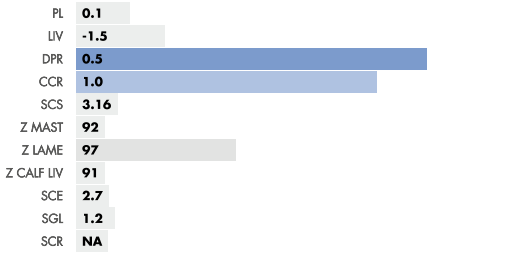
## INDEXES

HHP\$ 97  
DWP\$ -159  
GPRO\$ -321  
NM\$ 63  
TPI 2738  
BPI 203

## PRODUCTION

PTAM 796  
PTAF % -0.09  
PTAF 8  
PTAP % -0.03  
PTAP 19

## HEALTH AND FERTILITY TRAITS



Dam: S-S-I Doc Have Not 8784-ET EX-96

## PHYSICAL TRAIT EVALUATION

GUSA-HA 04-25  
0 dtrs. 0 herds  
80% Rel.

PTAT: 2.13 UDC: 1.56 FLC: 0.90 TPI: 2738

|                      |              |       |             |
|----------------------|--------------|-------|-------------|
| Stature              | Short        | 1.66  | Tall        |
| Strength             | Frail        | 1.54  | Strong      |
| Body Depth           | Shallow      | 1.85  | Deep        |
| Dairy Form           | Tight Ribbed | 1.54  | Open Ribbed |
| Rump Width           | Narrow       | 1.75  | Wide        |
| Rump Angle           | High Pins    | -0.50 | Sloped      |
| Rear Leg (side view) | Posty        | -0.22 | Sickled     |
| Rear Leg (rear view) | Hock-in      | 1.39  | Straight    |
| Foot Angle           | Low Angle    | 1.46  | Steep Angle |
| Feet & Leg Score     | Low          | 1.11  | High        |
| Fore Udder           | Loose        | 1.91  | Strong      |
| Rear Udder Height    | Low          | 2.41  | High        |
| Rear Udder Width     | Narrow       | 2.92  | Wide        |
| Udder Cleft          | Weak         | 0.80  | Strong      |
| Udder Depth          | Deep         | 1.01  | Shallow     |
| Front Teat Placement | Wide         | 0.59  | Close       |
| Rear Teat Placement  | Wide         | 0.30  | Close       |
| Teat Length          | Short        | 0.76  | Long        |



GUSA 04-25  
CDN Genomic  
Eval. 04-25  
Zoetis 04-25

# IMAGE

744HO17702 HAVEITALL SIDEKICK IMAGE-ET **A2A2**

**SIDEKICK X DOC X JEDI** TR TP TM TC TY TV TL TD TE HH1T HH2T HH3T HH4T HH5T HH6T

**HOLSTEIN** NASIS: 80FFWEN BETA CASEIN: A2A2 \$36 RRP \$75 SEXED

BPI: 260 OT: 105 MS: 110 MILKING SPEED: 99 TEMP: 102

DAM: S-S-I DOC HAVE NOT 8784-ET EX-96  
4-05 2X 320D 16180 KGM 3.9% 637 KGF 3.1% 497 KGP  
MGD: FLY-HIGHER JEDI HAVENOT-ET VG-86  
4-07 3X 365D 14256 KGM 3.1% 447 KGF 3.1% 442 KGP

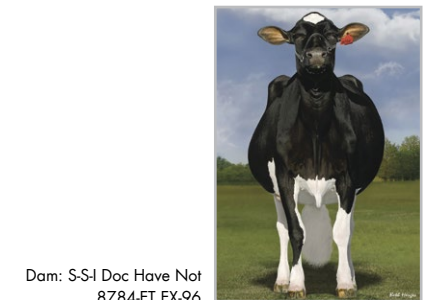
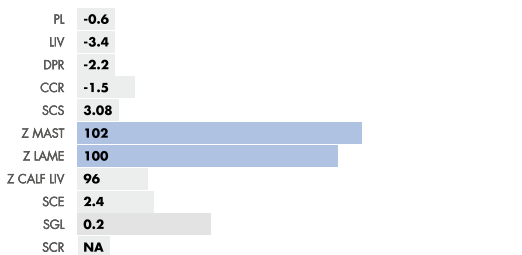
## INDEXES

HHP\$ 33  
DWP\$ -29  
GPRO\$ -321  
NM\$ -82  
TPI 2667  
BPI 260

## PRODUCTION

PTAM 343  
PTAF % -0.02  
PTAF 10  
PTAP % 0.03  
PTAP 19

## HEALTH AND FERTILITY TRAITS



Dam: S-S-I Doc Have Not 8784-ET EX-96

## PHYSICAL TRAIT EVALUATION

GUSA-HA 04-25  
0 dtrs. 0 herds  
82% Rel.

PTAT: 2.73 UDC: 1.77 FLC: 1.03 TPI: 2667

|                      |              |       |             |
|----------------------|--------------|-------|-------------|
| Stature              | Short        | 2.21  | Tall        |
| Strength             | Frail        | 1.89  | Strong      |
| Body Depth           | Shallow      | 2.42  | Deep        |
| Dairy Form           | Tight Ribbed | 2.30  | Open Ribbed |
| Rump Width           | Narrow       | 2.69  | Wide        |
| Rump Angle           | High Pins    | -0.15 | Sloped      |
| Rear Leg (side view) | Posty        | 1.20  | Sickled     |
| Rear Leg (rear view) | Hock-in      | 1.40  | Straight    |
| Foot Angle           | Low Angle    | 1.38  | Steep Angle |
| Feet & Leg Score     | Low          | 1.47  | High        |
| Fore Udder           | Loose        | 2.47  | Strong      |
| Rear Udder Height    | Low          | 2.53  | High        |
| Rear Udder Width     | Narrow       | 2.72  | Wide        |
| Udder Cleft          | Weak         | 1.56  | Strong      |
| Udder Depth          | Deep         | 1.61  | Shallow     |
| Front Teat Placement | Wide         | 0.88  | Close       |
| Rear Teat Placement  | Wide         | 0.74  | Close       |
| Teat Length          | Short        | 0.79  | Long        |



GUSA 04-25  
CDN Genomic  
Eval. 04-25  
Zoetis 04-25



## 744HO17423 MR DUCKETT LAMBDA JINX-ET

**DELTA-LAMBDA X DOC X G W ATWOOD** TR TP TM TC TY TV TL TD TE HH1T HH2T HH3T HH4T HH5T HH6T

**HOLSTEIN** NASIS: 80FFWES BETA CASEIN: A1A2 \$36 RRP \$80 SEXED

BPI: 220 OT: 106 MS: 111 MILKING SPEED: 102 TEMP: 103

DAM: PEACE&PLENTY DOC JUBIE16-ET EX-95  
4-03 2X 365D 16828 KGM 4.1% 692 KGF 3.1% 520 KGP

MGD: PEACE&PLENTY ATWD JUBILANT EX-93  
4-09 2X 305D 13499 KGM 4.0% 538 KGF 3.1% 424 KGP

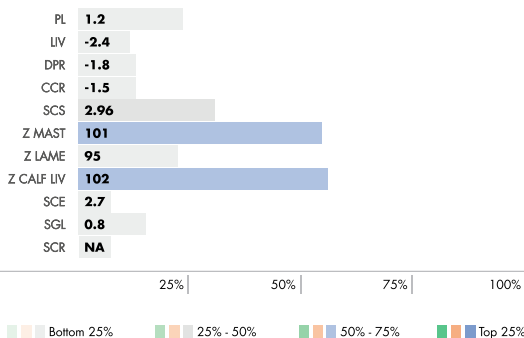
### INDEXES

|        |      |
|--------|------|
| HHP\$  | 77   |
| DWP\$  | -3   |
| GPRO\$ | -345 |
| NM\$   | 80   |
| TPI    | 2751 |
| BPI    | 220  |

### PRODUCTION

|        |       |
|--------|-------|
| PTAM   | 812   |
| PTAF % | -0.09 |
| PTAF   | 8     |
| PTAP % | -0.03 |
| PTAP   | 18    |

### HEALTH AND FERTILITY TRAITS



Dam: Peace&Plenty Doc Jubie16-ET EX-94

### PHYSICAL TRAIT EVALUATION

GUSA-HA 04-25  
0 dtrs. 0 herds  
81% Rel.

PTAT: 2.64 UDC: 1.94 FLC: 1.70 TPI: 2751

|                      |              |       |             |
|----------------------|--------------|-------|-------------|
| Stature              | Short        | 1.24  | Tall        |
| Strength             | Frail        | 1.10  | Strong      |
| Body Depth           | Shallow      | 1.61  | Deep        |
| Dairy Form           | Tight Ribbed | 1.83  | Open Ribbed |
| Rump Width           | Narrow       | 1.50  | Wide        |
| Rump Angle           | High Pins    | 0.07  | Sloped      |
| Rear Leg (side view) | Posty        | -0.28 | Sickled     |
| Rear Leg (rear view) | Hock-in      | 2.12  | Straight    |
| Foot Angle           | Low Angle    | 2.09  | Steep Angle |
| Feet & Leg Score     | Low          | 1.74  | High        |
| Fore Udder           | Loose        | 1.78  | Strong      |
| Rear Udder Height    | Low          | 3.01  | High        |
| Rear Udder Width     | Narrow       | 3.35  | Wide        |
| Udder Cleft          | Weak         | 1.88  | Strong      |
| Udder Depth          | Deep         | 0.48  | Shallow     |
| Front Teat Placement | Wide         | 1.09  | Close       |
| Rear Teat Placement  | Wide         | 1.71  | Close       |
| Teat Length          | Short        | 0.50  | Long        |



GUSA 04-25  
CDN Genomic  
Eval. 04-25  
Zoetis 04-25

# KINGME-P



## 744HO17422 CARTERS-CORNER KINGME-P-ET A2A2

**LUSTROUS-PP X NOBLE X DELTA** TR PC TM TC TY TV TL TD TE HH1T HH2T HH3T HH4T HH5T HH6T

**HOLSTEIN** NASIS: 80FFUEV BETA CASEIN: A2A2 \$40 RRP \$80 SEXED

BPI: 333 OT: 102 MS: 108 MILKING SPEED: 101 TEMP: 101

DAM: BGP NOBLE DHRMY 695-ET VG-88

2-04 2X 365D 19051 KGM 3.7% 704 KGF 3.2% 617 KGP

MGD: BGP DELTA HARMONY-ET

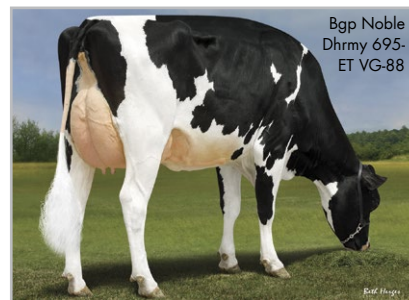
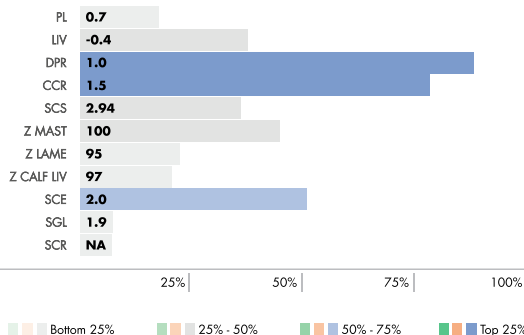
### INDEXES

|        |      |
|--------|------|
| HHP\$  | 69   |
| DWP\$  | 10   |
| GPRO\$ | -93  |
| NM\$   | 119  |
| TPI    | 2753 |
| BPI    | 333  |

### PRODUCTION

|        |       |
|--------|-------|
| PTAM   | 109   |
| PTAF % | -0.02 |
| PTAF   | -1    |
| PTAP % | 0.00  |
| PTAP   | 3     |

### HEALTH AND FERTILITY TRAITS



Bgp Noble Dhrmy 695-ET VG-88

### PHYSICAL TRAIT EVALUATION

GUSA-HA 04-25  
0 dtrs. 0 herds  
80% Rel.

PTAT: 2.40 UDC: 1.84 FLC: 1.06 TPI: 2753

|                      |              |       |             |
|----------------------|--------------|-------|-------------|
| Stature              | Short        | 1.86  | Tall        |
| Strength             | Frail        | 0.48  | Strong      |
| Body Depth           | Shallow      | 1.02  | Deep        |
| Dairy Form           | Tight Ribbed | 2.05  | Open Ribbed |
| Rump Width           | Narrow       | 1.59  | Wide        |
| Rump Angle           | High Pins    | -0.70 | Sloped      |
| Rear Leg (side view) | Posty        | 0.85  | Sickled     |
| Rear Leg (rear view) | Hock-in      | 0.89  | Straight    |
| Foot Angle           | Low Angle    | 1.42  | Steep Angle |
| Feet & Leg Score     | Low          | 1.53  | High        |
| Fore Udder           | Loose        | 2.09  | Strong      |
| Rear Udder Height    | Low          | 2.44  | High        |
| Rear Udder Width     | Narrow       | 1.96  | Wide        |
| Udder Cleft          | Weak         | 2.02  | Strong      |
| Udder Depth          | Deep         | 2.27  | Shallow     |
| Front Teat Placement | Wide         | 2.03  | Close       |
| Rear Teat Placement  | Wide         | 1.95  | Close       |
| Teat Length          | Short        | -0.93 | Long        |



GUSA 04-25  
CDN Genomic  
Eval. 04-25  
Zoetis 04-25

# LACTEUR



744HO17421 COMESTAR LACTEUR **A2A2**

**BULLSEYE X TROPIC X UNIX** TR TP TM TC TY TV TL TD TE HH1T HH2T HH3T HH4T HH5T HH6T

**HOLSTEIN** NASIS: 80FFTT1 BETA CASEIN: A2A2 \$36 RRP \$75 SEXED

BPI: 307 OT: 108 MS: 110 MILKING SPEED: 102 TEMP: 103

DAM: COMESTAR LATASHA TROPIC EX-93  
2-09 2X 365D 14497 KGM 4.0% 581 KGF 3.6% 525 KGP

MGD: COMESTAR LANIKE UNIX VG-88  
4-05 2X 365D 14254 KGM 3.9% 554 KGF 3.0% 431 KGP

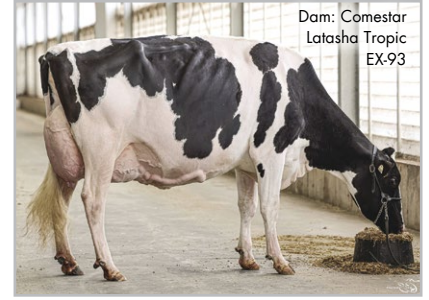
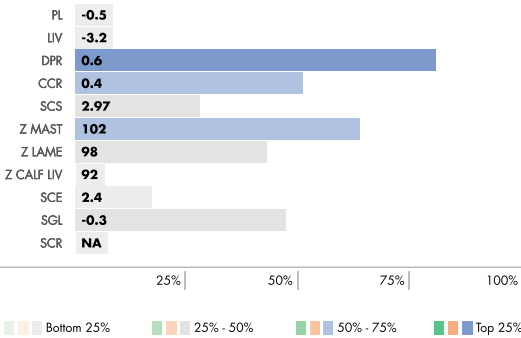
## INDEXES

|        |      |
|--------|------|
| HHP\$  | -51  |
| DWP\$  | -324 |
| GPRO\$ | -188 |
| NM\$   | -180 |
| TPI    | 2580 |
| BPI    | 307  |

## PRODUCTION

|        |       |
|--------|-------|
| PTAM   | 19    |
| PTAF % | -0.04 |
| PTAF   | -11   |
| PTAP % | 0.01  |
| PTAP   | 3     |

## HEALTH AND FERTILITY TRAITS



## PHYSICAL TRAIT EVALUATION

PTAT: 2.33 UDC: 1.42 FLC: 1.29 TPI: 2580

GUSA-HA 04-25  
0 dtrs. 0 herds  
79% Rel.

|                      |              |       |             |
|----------------------|--------------|-------|-------------|
| Stature              | Short        | 2.42  | Tall        |
| Strength             | Frail        | 1.89  | Strong      |
| Body Depth           | Shallow      | 2.01  | Deep        |
| Dairy Form           | Tight Ribbed | 1.26  | Open Ribbed |
| Rump Width           | Narrow       | 2.35  | Wide        |
| Rump Angle           | High Pins    | 0.11  | Sloped      |
| Rear Leg (side view) | Posty        | -0.06 | Sickled     |
| Rear Leg (rear view) | Hock-in      | 1.76  | Straight    |
| Foot Angle           | Low Angle    | 1.70  | Steep Angle |
| Feet & Leg Score     | Low          | 1.68  | High        |
| Fore Udder           | Loose        | 1.84  | Strong      |
| Rear Udder Height    | Low          | 2.38  | High        |
| Rear Udder Width     | Narrow       | 2.53  | Wide        |
| Udder Cleft          | Weak         | 1.57  | Strong      |
| Udder Depth          | Deep         | 1.02  | Shallow     |
| Front Teat Placement | Wide         | 0.96  | Close       |
| Rear Teat Placement  | Wide         | 1.03  | Close       |
| Teat Length          | Short        | 0.49  | Long        |



GUSA 04-25  
CDN Genomic  
Eval. 04-25  
Zoetis 04-25

# MIRACULOUS-RED



744HO17701 MAPLES MIRACULOUS-RED-ET

**ALPHA X UNSTOPABULL X ARMANI\*RC** TP TM TC TY TV TL TD TE HH1T HH2T HH3T HH4T HH5T HH6T

**HOLSTEIN** NASIS: 80FFWGA BETA CASEIN: A1A1 \$36 RRP \$75 SEXED

BPI: 118 OT: 104 MS: 108 MILKING SPEED: 102 TEMP: 102

DAM: BLONDIN RD UNSTOPABULL MAPLE EX-94

MGD: KAWARTHA ARMANI MEMORY EX-92  
3-MAY 2X 365D 15246 KGM 4.5% 688 KGF 3.1% 469 KGP

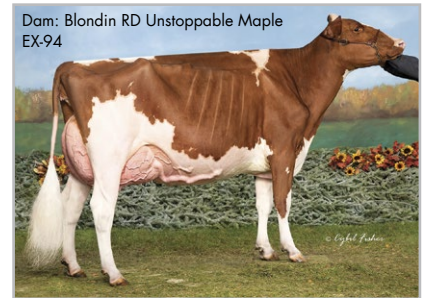
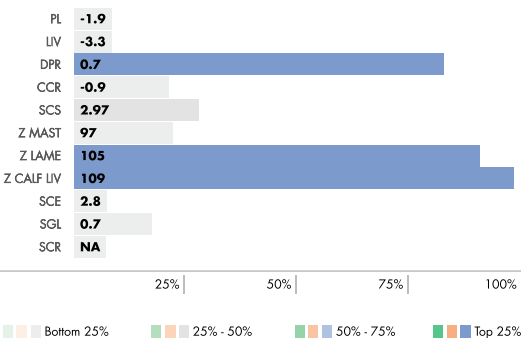
## INDEXES

|        |      |
|--------|------|
| HHP\$  | -343 |
| DWP\$  | -484 |
| GPRO\$ | -182 |
| NM\$   | -412 |
| TPI    | 2239 |
| BPI    | 118  |

## PRODUCTION

|        |       |
|--------|-------|
| PTAM   | -737  |
| PTAF % | 0.06  |
| PTAF   | -15   |
| PTAP % | -0.02 |
| PTAP   | -30   |

## HEALTH AND FERTILITY TRAITS



## PHYSICAL TRAIT EVALUATION

PTAT: 1.12 UDC: 0.90 FLC: 1.20 TPI: 2239

GUSA-HA 04-25  
0 dtrs. 0 herds  
79% Rel.

|                      |              |       |             |
|----------------------|--------------|-------|-------------|
| Stature              | Short        | 1.44  | Tall        |
| Strength             | Frail        | 0.96  | Strong      |
| Body Depth           | Shallow      | 1.05  | Deep        |
| Dairy Form           | Tight Ribbed | 0.28  | Open Ribbed |
| Rump Width           | Narrow       | 0.99  | Wide        |
| Rump Angle           | High Pins    | 0.01  | Sloped      |
| Rear Leg (side view) | Posty        | -0.39 | Sickled     |
| Rear Leg (rear view) | Hock-in      | 1.66  | Straight    |
| Foot Angle           | Low Angle    | 1.98  | Steep Angle |
| Feet & Leg Score     | Low          | 1.31  | High        |
| Fore Udder           | Loose        | 1.17  | Strong      |
| Rear Udder Height    | Low          | 2.06  | High        |
| Rear Udder Width     | Narrow       | 1.20  | Wide        |
| Udder Cleft          | Weak         | 0.55  | Strong      |
| Udder Depth          | Deep         | 0.85  | Shallow     |
| Front Teat Placement | Wide         | 0.02  | Close       |
| Rear Teat Placement  | Wide         | -0.48 | Close       |
| Teat Length          | Short        | -0.25 | Long        |



GUSA 04-25  
CDN Genomic  
Eval. 04-25  
Zoetis 04-25