

# WWS AUSTRALIA



HERE FOR YOU.

**WORLD WIDE SIRES**

(03) 5831 5559 • [info@wwsaustralia.com](mailto:info@wwsaustralia.com)  
[www.wwsaustralia.com](http://www.wwsaustralia.com)

**VALUE  
SELECTION  
GUIDE**

APRIL 2024



[www.wwsaustralia.com](http://www.wwsaustralia.com)

Product of the USA



# WWS AUSTRALIA TEAM



NAME	AREA	EMAIL	PHONE
<b>WWS MANAGEMENT</b>			
Geoff Wood	General Manager	gwood@wwsaustralia.com	0427 391 355
Tim Weller	Marketing Manager	tweller@wwsaustralia.com	0427 465 490
Chris Kendall	Global Dairy Solutions Manager	ckendall@wwsaustralia.com	0427 487 743
Paul Quinlan	Business Development Manager	pquinlan@wwsaustralia.com	0447 047 425
<b>WWS SALES TEAM – DAIRY</b>			
Amy Wright	WMS Specialist	awright@wwsaustralia.com	0408 417 871
Carl Moon	Northern Victoria	cmoon@wwsaustralia.com	0427 638 176
Jamie Drury	Genetic Programs Specialist	jdrury@wwsaustralia.com	0427 008 088
John Conheady	Western Victoria	jconheady@wwsaustralia.com	0427 812 321
Judson Jennings	Western Victoria	jjennings@wwsaustralia.com	0427 383 232
Mark Patullo	WMS Specialist	mpatullo@wwsaustralia.com	0427 497 555
Niel Van Rensburg	East Gippsland	nvanrensburg@wwsaustralia.com	0429 776 615
Neil Warnett	NSW, Tasmania	nwarnett@wwsaustralia.com	0427 489 539
Ric Minichiello	Gippsland	rminichiello@wwsaustralia.com	0499 111 630
Tony Jackson	Western Victoria, South East South Australia	tjackson@wwsaustralia.com	0427 501 950
<b>WWS SALES TEAM – BEEF</b>			
Annie Edwards	Beef Marketing and Product Support Officer	aedwards@wwsaustralia.com	0490 196 639
Dale Edwards	Beef Sales Manager	dedwards@wwsaustralia.com	0427 806 672
Dave Gibson	Beef Specialist North NSW and Queensland	dgibson@wwsaustralia.com	0427 571 183
<b>WWS REPRODUCTIVE CONSULTANTS &amp; COW MANAGER</b>			
Paul Quinlan	Cow Manager - National	pquinlan@wwsaustralia.com	0447 047 425
Chris Kendall	Reproduction Consultant & Cow Manager - National	ckendall@wwsaustralia.com	0427 487 743
Tony Jackson	Reproduction Consultant & Cow Manager - Western Vic & South Australia	tjackson@wwsaustralia.com	0427 501 950
<b>OFFICE AND DESPATCH</b>			
Andrea Kelly	Office Manager	info@wwsaustralia.com	03 5831 5559
Taylah Heanes	Office Administration	orders@wwsaustralia.com	03 5831 5559
Mike Wood	Dispatch Manager	mwood@wwsaustralia.com	03 5831 5559

## TERMS OF USE WARRANTY STATEMENT

Products sold by World Wide Sires, Ltd. or its affiliates to a buyer shall not be used other than as authorized by the terms and conditions in the sales invoice. Each conventionally processed semen straw (not sex sorted) shall be used only for insemination of a female bovine. ALL OTHER USES OF BOVINE SEMEN FROM WORLD WIDE SIRES, LTD. AND ITS AFFILIATES ARE STRICTLY PROHIBITED WITHOUT THE PRIOR WRITTEN CONSENT OF SELECT SIRES INC. INCLUDING (WITHOUT LIMITATION) GENOTYPING, SEQUENCING, CLONING, GENETIC ANALYSIS, GENETIC MANIPULATION OR FOR RESEARCH. World Wide Sires, Ltd., Select Sires Inc., its member cooperatives, its agents or employees cannot and do not guarantee the conception rate, gender, quality or productivity to be obtained in connection with the use of its products or recommended techniques. There is no guarantee or warranty that the bulls marketed do not carry any unknown or undesirable genetic defects, haplotypes and/or recessives. It makes no warranties of any kind whatsoever, expressed or implied, which extend beyond the description of its products and hereby disclaims all warranties of merchantability and fitness for a particular purpose. In the unlikely event that any of our products shall be proven to be defective, damages resulting from their use shall exclude consequential damages and be limited to the purchase price of the product.

Limitations and Conditions of Sale: gender SELECTED semen shall be used only for the single insemination of one female bovine during natural ovulation with the intent to produce single offspring unless specifically approved on an individual customer basis by Sexing Technologies in writing. As a condition of purchasing gender SELECTED semen, the purchaser agrees that gender SELECTED semen will not be reverse sorted or re-sorted unless specifically permitted, in advance, on a case-by-case basis by Select Sires in writing. Select Sires intends to monitor the use of the gender SELECTED semen and vigorously enforce these restrictions on use. Please see <http://www.selectsires.com/designations/gendersselected.html> for additional details.

®GForce, GForce+, Showcase, gender SELECTED and Elite Sexed Fertility are trademarks of Select Sires Inc. ®FeedPRO, RobotPRO, FertilityPRO, Mastitis ResistantPRO, GrazingPRO, NxGEN and HHPS are registered trademarks of Select Sires Inc. Ultraplus™ is a trademark of STGen LLC. All gender SELECTED semen is processed using Ultraplus™ technology. ®TPI is a registered trademark of Holstein USA. ®JPI and JPI are registered trademarks of AICA. ®DWPS is registered trademark of Zoetis, Inc., its affiliates and/or its licensors.

Front cover photo: Whytcross Family,  
Swan Marsh, Victoria  
Photo by Amy Wright

# ALLGONE-PP



HOLSTEIN

250HO16801 AR-JOY CU ALLGONE-PP-ET **A2A2**

**PLAYOFF-P X PERFECT X DRASTIC-P** TR PP TM TC TY TV TL TD TE HH1T HH2T HH3T HH4T HH5T HH6T

**HOLSTEIN NASIS:** 80FFVK4 **BETA CASEIN:** A2A2 **\$32 RRP \$70 SEXED**

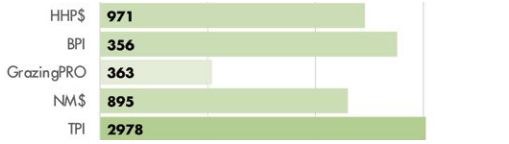
**BPI:** 356 **OT:** 99 **MS:** 101 **MILKING SPEED:** 104 **TEMP:** 100

DAM: AR-JOY CU PARI ALYSSA-ET

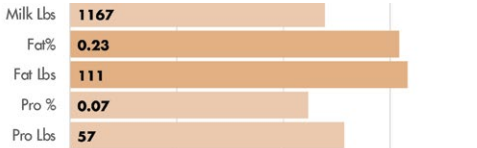
MGD: AR-JOY CU DRAST APPLE-PET VG-86

1-10 3X 365D 13376 KGM 4.8% 639 KGF 3.8% 506 KGP

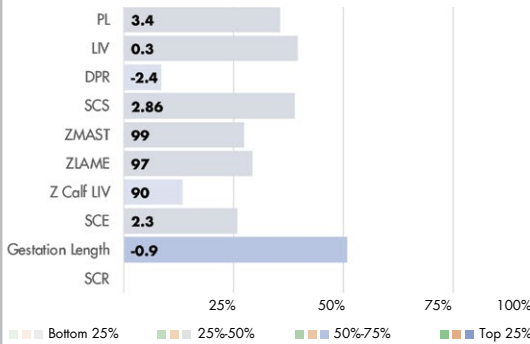
## INDEXES



## PRODUCTION



## HEALTH AND FERTILITY TRAITS



MGD: Ar-Joy Cu Drast Apple-PET [VG-86]

## PHYSICAL TRAIT EVALUATION

CDCB/HA Genetic Eval. 04-24  
0 dtrs. 0 herds  
78% Rel.

PTAT: 2.01 UDC: 2.40 FLC: 0.45 TPI: 2978

Stature	Short	1.46	Tall
Strength	Frail	0.40	Strong
Body Depth	Shallow	0.49	Deep
Dairy Form	Tight Ribbed	1.41	Open Ribbed
Rump Width	Narrow	1.90	Wide
Rump Angle	High Pins	1.00	Sloped
Rear Leg (side view)	Posty	-0.35	Sickled
Rear Leg (rear view)	Hock-in	0.85	Straight
Foot Angle	Low Angle	0.93	Steep Angle
Feet & Leg Score	Low	0.68	High
Fore Udder	Loose	2.66	Strong
Rear Udder Height	Low	3.31	High
Rear Udder Width	Narrow	3.15	Wide
Udder Cleft	Weak	1.52	Strong
Udder Depth	Deep	2.13	Shallow
Front Teat Placement	Wide	1.41	Close
Rear Teat Placement	Wide	1.84	Close
Teat Length	Short	-1.19	Long



USDA-CDCB  
Genomic Eval.  
04-24  
CDN Genomic  
Eval. 04-24  
Zoetis 04-24

# AMAETHON-P



7HO15581 LIGHTNING RIDGE AMAETHON P-ET

**MIRAND X DOC X ARCHRIVAL** TR PC TC TY TV TL TD TE HH1T HH2T HH3T HH4T HH5T HH6T

**HOLSTEIN NASIS:** 30FFT01 **BETA CASEIN:** A1A2 **\$22 RRP \$50 SEXED**

**BPI:** 137 **OT:** 108 **MS:** 114 **MILKING SPEED:** 104 **TEMP:** 102

DAM: ROCKSTAR WHPG KINGDOC ADA-ET VG-85

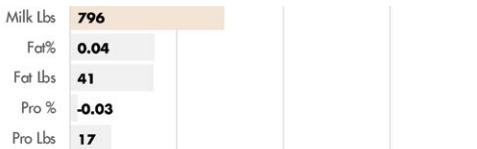
2-10 2X 220D 6809 KGM 3.2% 219 KGF 3.7% 253 KGP

MGD: KEILAGLEN ARCHRIVAL ADA-IMP-ET

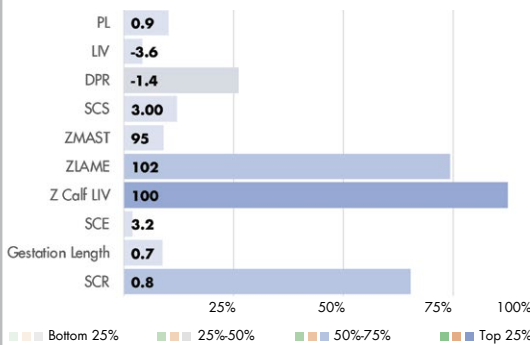
## INDEXES



## PRODUCTION



## HEALTH AND FERTILITY TRAITS



Dam: Rockstar WHPG Kingdoc Ada VG-85

## PHYSICAL TRAIT EVALUATION

CDCB/HA Genetic Eval. 04-24  
0 dtrs. 0 herds  
79% Rel.

PTAT: 3.43 UDC: 2.70 FLC: 0.72 TPI: 2436

Stature	Short	3.68	Tall
Strength	Frail	1.55	Strong
Body Depth	Shallow	2.85	Deep
Dairy Form	Tight Ribbed	3.82	Open Ribbed
Rump Width	Narrow	2.86	Wide
Rump Angle	High Pins	0.58	Sloped
Rear Leg (side view)	Posty	1.50	Sickled
Rear Leg (rear view)	Hock-in	1.10	Straight
Foot Angle	Low Angle	2.02	Steep Angle
Feet & Leg Score	Low	1.56	High
Fore Udder	Loose	3.29	Strong
Rear Udder Height	Low	4.27	High
Rear Udder Width	Narrow	4.24	Wide
Udder Cleft	Weak	2.52	Strong
Udder Depth	Deep	2.17	Shallow
Front Teat Placement	Wide	2.31	Close
Rear Teat Placement	Wide	2.78	Close
Teat Length	Short	0.30	Long



USDA-CDCB  
Genomic Eval.  
04-24  
CDN Genomic  
Eval. 04-24  
Zoetis 04-24



# ANALYST-RED



7HO15023 MR AFFECTION ANALYST-RED-ET

UNSTOPABULL X BYWAY X G W ATWOOD TP TC TY TV TL TD TE HH1T HH2T HH3T HH4T HH5T HH6T

**HOLSTEIN** NASIS: 80FFRCL BETA CASEIN: A1A2 \$18 RRP \$50 SEXED  
BPI: 113 OT: 105 MS: 108 MILKING SPEED: 101 TEMP: 102

DAM: MILKSOURCE BYWAY AFFECTION EX-94  
4-05 2X 305D 18126 KGM 4.3% 788 KGF 2.6% 469 KGP  
MGD: MS APPLE ATARAH-ET

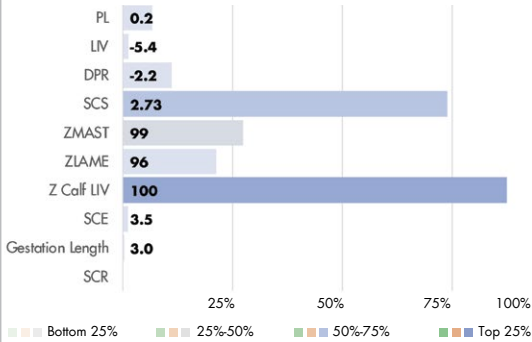
## INDEXES

HHP\$	-291
BPI	113
GrazingPRO	-728
NM\$	-364
TPI	1795

## PRODUCTION

Milk Lbs	92
Fat%	-0.12
Fat Lbs	-30
Pro %	-0.09
Pro Lbs	-22

## HEALTH AND FERTILITY TRAITS



D-Ray Analyst Joydiquoi VG-87

## PHYSICAL TRAIT EVALUATION

CDCB/HA Genetic Eval. 04-24  
729 dtrs. 349 herds  
98% Rel.

PTAT: 2.09 UDC: 1.55 FLC: 1.18 TPI: 1795

Stature	Short	3.70	Tall
Strength	Frail	1.11	Strong
Body Depth	Shallow	0.95	Deep
Dairy Form	Tight Ribbed	0.28	Open Ribbed
Rump Width	Narrow	0.34	Wide
Rump Angle	High Pins	0.85	Sloped
Rear Leg (side view)	Posty	-1.48	Sickled
Rear Leg (rear view)	Hock-in	2.35	Straight
Foot Angle	Low Angle	2.96	Steep Angle
Feet & Leg Score	Low	1.71	High
Fore Udder	Loose	2.73	Strong
Rear Udder Height	Low	2.22	High
Rear Udder Width	Narrow	1.33	Wide
Udder Cleft	Weak	2.03	Strong
Udder Depth	Deep	3.40	Shallow
Front Teat Placement	Wide	1.75	Close
Rear Teat Placement	Wide	1.78	Close
Teat Length	Short	-1.35	Long



IB/MACE-G 04-24  
CDN Genomic  
Eval. 04-24  
Zoetis 04-24

# BACKFLIP



7HO14324 JACOBS BACKFLIP

HIGH OCTANE X GOLDWYN X JASPER TR TP TC TY TV TL TD TE HH1T HH2T HH3T HH4T HH5T HH6T

**HOLSTEIN** NASIS: 70FFPA2 BETA CASEIN: A1A2 \$16 RRP  
BPI: 139 OT: 109 MS: 110 MILKING SPEED: 102 TEMP: 102

DAM: JACOBS GOLDWYN BRITANY EX-96  
6-01 2X 352D 18800 KGM 4.0% 760 KGF 2.9% 553 KGP  
MGD: JACOBS JASPER BEST VG-88  
4-07 2X 336D 18638 KGM 4.0% 741 KGF 3.1% 581 KGP

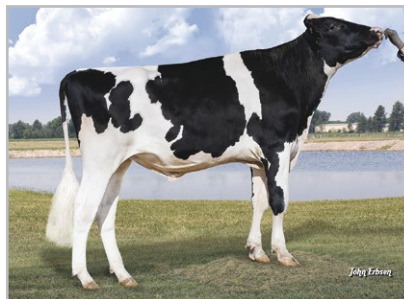
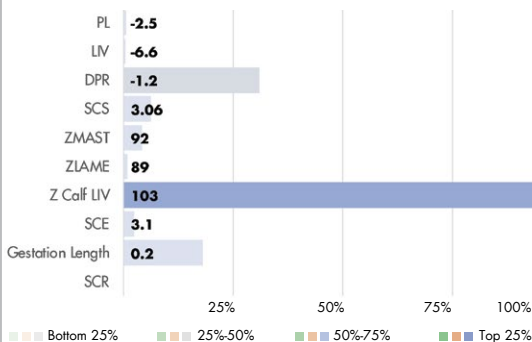
## INDEXES

HHP\$	-223
BPI	139
GrazingPRO	-787
NM\$	-332
TPI	1868

## PRODUCTION

Milk Lbs	420
Fat%	-0.08
Fat Lbs	-7
Pro %	-0.07
Pro Lbs	-7

## HEALTH AND FERTILITY TRAITS



Jacobs Backflip Milina VG-86

## PHYSICAL TRAIT EVALUATION

CDCB/HA Genetic Eval. 04-24  
485 dtrs. 230 herds  
97% Rel.

PTAT: 2.12 UDC: 1.58 FLC: 0.02 TPI: 1868

Stature	Short	4.30	Tall
Strength	Frail	1.16	Strong
Body Depth	Shallow	1.94	Deep
Dairy Form	Tight Ribbed	2.20	Open Ribbed
Rump Width	Narrow	2.62	Wide
Rump Angle	High Pins	1.56	Sloped
Rear Leg (side view)	Posty	-0.57	Sickled
Rear Leg (rear view)	Hock-in	1.01	Straight
Foot Angle	Low Angle	1.24	Steep Angle
Feet & Leg Score	Low	0.89	High
Fore Udder	Loose	1.95	Strong
Rear Udder Height	Low	3.08	High
Rear Udder Width	Narrow	2.52	Wide
Udder Cleft	Weak	1.43	Strong
Udder Depth	Deep	3.05	Shallow
Front Teat Placement	Wide	0.04	Close
Rear Teat Placement	Wide	0.30	Close
Teat Length	Short	0.35	Long



IB/MACE-G 04-24  
CDN Genomic  
Eval. 04-24  
Zoetis 04-24



# BART



459 BPI

14HO16036 HOUIN AURORA MASSEY BART-ET **A2A2**

**MASSEY X RENEGADE X SUPERSPRING** TR TP TM TC TY TV TL TD TE HH1T HH2T HH3T HH4T HH5T HH6T

**HOLSTEIN** NASIS: 80FFUGR BETA CASEIN: A2A2 \$16 RRP

**BPI: 459 OT: 95 MS: 95 MILKING SPEED: 101 TEMP: 100**

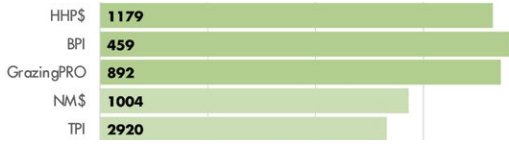
DAM: MS HOMESTEAD SSI 16 298-ET GP-80

2-01 3X 305D 13640 KGM 4.4% 596 KGF 3.5% 471 KGP

MGD: BADGER S-S-I 7467 16-ET GP-83

2-00 3X 305D 16316 KGM 3.8% 622 KGF 3.2% 517 KGP

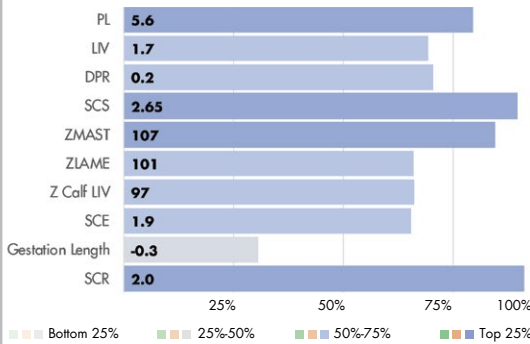
## INDEXES



## PRODUCTION



## HEALTH AND FERTILITY TRAITS



Sire: OCD Legacy Massey-ET



4th dam: Plain-Knoll Mogul Mariah VG-88

## PHYSICAL TRAIT EVALUATION

CDCB/HA Genetic Eval. 04-24  
0 dtrs. 0 herds  
80% Rel.

PTAT: 0.67 UDC: 0.72 FLC: -0.24 TPI: 2920

Stature	Short		0.25	Tall
Strength	Frail		-0.08	Strong
Body Depth	Shallow		-0.61	Deep
Dairy Form	Tight Ribbed		-0.04	Open Ribbed
Rump Width	Narrow		0.20	Wide
Rump Angle	High Pins		-0.52	Sloped
Rear Leg (side view)	Posty		0.84	Sickled
Rear Leg (rear view)	Hock-in		-0.24	Straight
Foot Angle	Low Angle		-0.18	Steep Angle
Feet & Leg Score	Low		-0.12	High
Fore Udder	Loose		1.41	Strong
Rear Udder Height	Low		0.26	High
Rear Udder Width	Narrow		0.39	Wide
Udder Cleft	Weak		0.05	Strong
Udder Depth	Deep		1.77	Shallow
Front Teat Placement	Wide		-0.06	Close
Rear Teat Placement	Wide		-0.30	Close
Teat Length	Short		-0.52	Long



USDA-CDCB  
Genomic Eval.  
04-24  
CDN Genomic  
Eval. 04-24  
Zoetis 04-24

# BURGOON



444 BPI

7HO16163 HOUIN AURORA MSY BURGOON-ET **A2A2**

**MASSEY X RENEGADE X SUPERSPRING** TR TP TC TY TV TL TD TE HH1T HH2T HH3T HH4T HH5T HH6T

**HOLSTEIN** NASIS: 80FFUGT BETA CASEIN: A2A2 \$22 RRP \$60 SEXED

**BPI: 444 OT: 97 MS: 96 MILKING SPEED: 99 TEMP: 100**

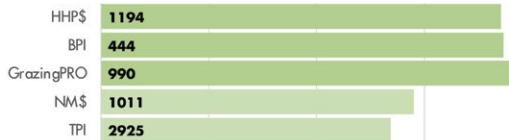
DAM: MS HOMESTEAD SSI 16 298-ET GP-80

2-01 3X 305D 13640 KGM 4.4% 596 KGF 3.5% 471 KGP

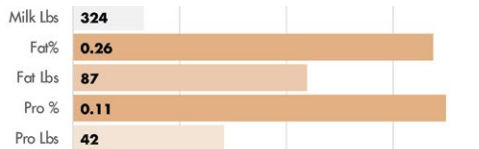
MGD: BADGER S-S-I 7467 16-ET GP-83

2-00 3X 305D 16316 KGM 3.8% 622 KGF 3.2% 517 KGP

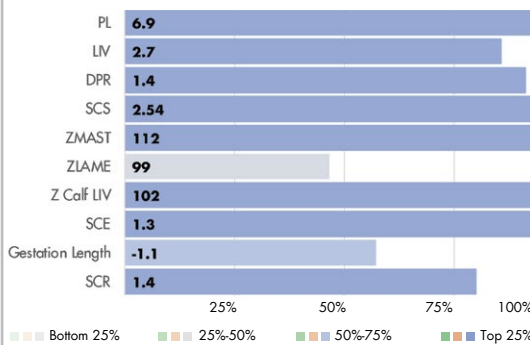
## INDEXES



## PRODUCTION



## HEALTH AND FERTILITY TRAITS



Sire: OCD Legacy Massey-ET



4th dam: Plain-Knoll Mogul Mariah VG-88

## PHYSICAL TRAIT EVALUATION

CDCB/HA Genetic Eval. 04-24  
0 dtrs. 0 herds  
80% Rel.

PTAT: 0.58 UDC: 0.86 FLC: 0.08 TPI: 2925

Stature	Short		0.32	Tall
Strength	Frail		-0.58	Strong
Body Depth	Shallow		-0.75	Deep
Dairy Form	Tight Ribbed		0.52	Open Ribbed
Rump Width	Narrow		0.27	Wide
Rump Angle	High Pins		0.55	Sloped
Rear Leg (side view)	Posty		0.68	Sickled
Rear Leg (rear view)	Hock-in		0.06	Straight
Foot Angle	Low Angle		-0.33	Steep Angle
Feet & Leg Score	Low		0.22	High
Fore Udder	Loose		0.88	Strong
Rear Udder Height	Low		0.53	High
Rear Udder Width	Narrow		0.67	Wide
Udder Cleft	Weak		1.13	Strong
Udder Depth	Deep		1.49	Shallow
Front Teat Placement	Wide		0.84	Close
Rear Teat Placement	Wide		0.93	Close
Teat Length	Short		-1.02	Long



USDA-CDCB  
Genomic Eval.  
04-24  
CDN Genomic  
Eval. 04-24  
Zoetis 04-24

# CARROT



439 BPI

507HO16744 S-S-I SIEMERS OD CARROT-ET **A2A2**

**OVERDO X PERFECT X LEGACY** TR TP TM TC TY TV TL TD TE HH1T HH2T HH3T HH4T HH5T HH6T

**HOLSTEIN** NASIS: 80FFVM5 BETA CASEIN: A2A2 **\$85 SEXED**

**BPI: 439 OT: 101 MS: 105 MILKING SPEED: 102 TEMP: 102**

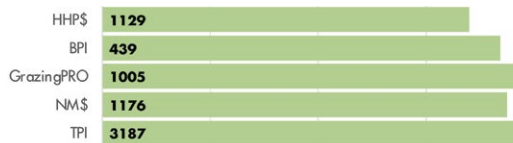
DAM: S-S-I VF 316 59873-ET VG-87

2-01 3X 365D 18044 KGM 5.2% 929 KGF 3.4% 605 KGP

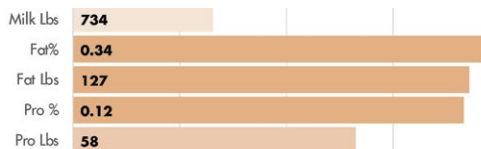
MGD: PRESTON SSI HD 5716 316-ET 76

3-00 3X 305D 12152 KGM 4.0% 482 KGF 3.3% 399 KGP

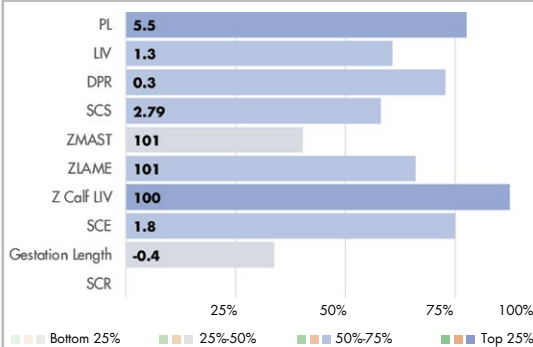
## INDEXES



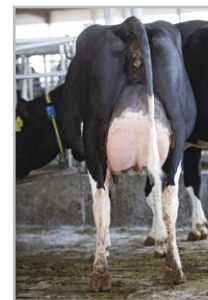
## PRODUCTION



## HEALTH AND FERTILITY TRAITS



Perfect dir: Duckett Perfect Holly-ET VG-86



Dam: S-S-I VF 316 59873-ET VG-87

## PHYSICAL TRAIT EVALUATION

CDCB/HA Genetic Eval. 04-24

PTAT: 1.53 UDC: 2.25 FLC: 1.19 TPI: 3187

0 dtrs. 0 herds  
79% Rel.

Stature	Short			-0.90	Tall
Strength	Frail			-0.93	Strong
Body Depth	Shallow			-0.92	Deep
Dairy Form	Tight Ribbed			1.27	Open Ribbed
Rump Width	Narrow			1.00	Wide
Rump Angle	High Pins			-0.59	Sloped
Rear Leg (side view)	Posty			0.04	Sickled
Rear Leg (rear view)	Hock-in			1.16	Straight
Foot Angle	Low Angle			0.52	Steep Angle
Feet & Leg Score	Low			0.87	High
Fore Udder	Loose			1.81	Strong
Rear Udder Height	Low			2.58	High
Rear Udder Width	Narrow			2.71	Wide
Udder Cleft	Weak			2.05	Strong
Udder Depth	Deep			0.66	Shallow
Front Teat Placement	Wide			1.49	Close
Rear Teat Placement	Wide			2.20	Close
Teat Length	Short			-0.60	Long



USDA-CDCB  
Genomic Eval.  
04-24  
CDN Genomic  
Eval. 04-24  
Zoetis 04-24

# CHEESE



14HO15312 PINE-TREE LEGACY CHEESE-ET **A2A2**

**LEGACY X DELTA X SUPERSIRE** TR TP TC TY TV TL TD TE HH1T HH2T HH3T HH4T HH5T HH6T

**HOLSTEIN** NASIS: 80FFSMW BETA CASEIN: A2A2 **\$20 RRP \$40 SEXED**

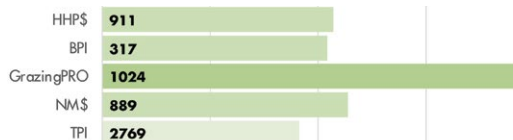
**BPI: 317 OT: 99 MS: 100 MILKING SPEED: 100 TEMP: 99**

DAM: SANDY-VALLEY NO LIMIT-ET VG-86

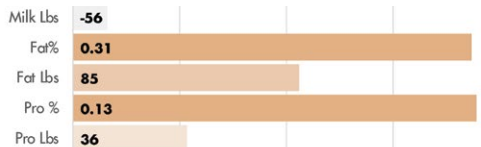
5-07 2X 329D 10614 KGM 5.3% 560 KGF 3.5% 373 KGP

MGD: SANDY-VALLEY SS PSYCH-ET

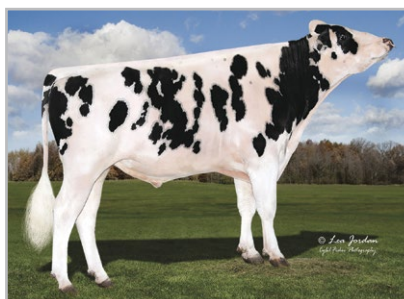
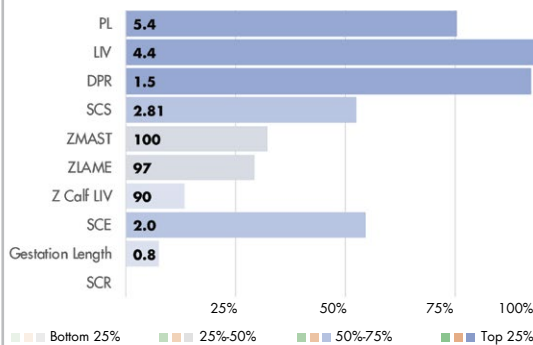
## INDEXES



## PRODUCTION



## HEALTH AND FERTILITY TRAITS



Dam: Sandy-Valley No Limit-ET VG-86

## PHYSICAL TRAIT EVALUATION

CDCB/HA Genetic Eval. 04-24

PTAT: -0.09 UDC: 1.07 FLC: -0.59 TPI: 2769

47 dtrs. 10 herds  
87% Rel.

Stature	Short			-1.76	Tall
Strength	Frail			-0.95	Strong
Body Depth	Shallow			-1.43	Deep
Dairy Form	Tight Ribbed			-0.67	Open Ribbed
Rump Width	Narrow			-0.39	Wide
Rump Angle	High Pins			0.61	Sloped
Rear Leg (side view)	Posty			-0.29	Sickled
Rear Leg (rear view)	Hock-in			-1.26	Straight
Foot Angle	Low Angle			-0.70	Steep Angle
Feet & Leg Score	Low			-0.83	High
Fore Udder	Loose			1.21	Strong
Rear Udder Height	Low			1.01	High
Rear Udder Width	Narrow			0.60	Wide
Udder Cleft	Weak			-0.16	Strong
Udder Depth	Deep			0.65	Shallow
Front Teat Placement	Wide			-0.51	Close
Rear Teat Placement	Wide			-0.61	Close
Teat Length	Short			-0.64	Long



I8/MACE-G 04-24  
CDN Genomic  
Eval. 04-24  
Zoetis 04-24





## 9HO16227 S-S-I CONWAY CHIP SLICK-ET **A2A2**

**CONWAY X LONE RANGER X JODANDY** TR TP TC TY TV TL TD TE HH1T HH2T HH3T HH4T HH5T HH6T

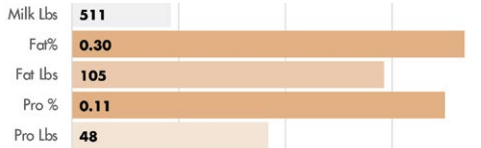
**HOLSTEIN** NASIS: 80FFUGD BETA CASEIN: A2A2 \$28 RRP \$70 SEXED  
 BPI: 268 OT: 102 MS: 97 MILKING SPEED: 102 TEMP: 99

DAM: S-S-I RANGER 9092 11199-ET VG-85  
 3-03 3X 305D 15055 KGM 5.2% 789 KGF 3.7% 555 KGP  
 MGD: S-S-I JODANDY 1088 9092

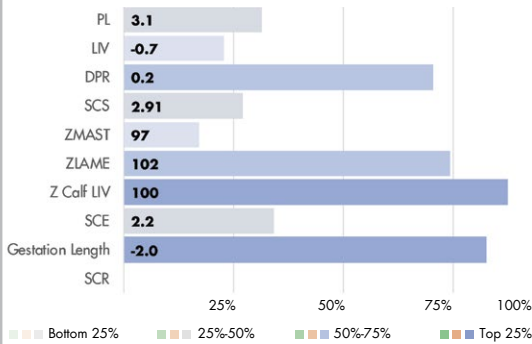
### INDEXES



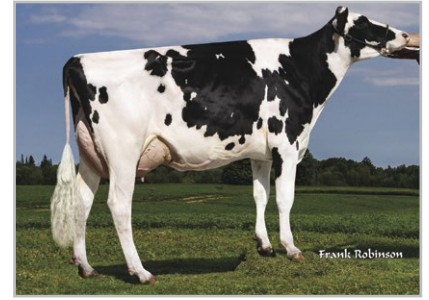
### PRODUCTION



### HEALTH AND FERTILITY TRAITS



Paternal sister: Duckett Conway Hannah-ET VG-85



4th dam: Progenesis Tango Fancy VG-85

### PHYSICAL TRAIT EVALUATION

CDCB/HA Genetic Eval. 04-24  
 0 dtrs. 0 herds  
 79% Rel.

PTAT: 0.80 UDC: 0.37 FLC: 0.52 TPI: 2815

Stature	Short		0.33	Tall
Strength	Frail		0.35	Strong
Body Depth	Shallow		0.71	Deep
Dairy Form	Tight Ribbed		1.07	Open Ribbed
Rump Width	Narrow		0.32	Wide
Rump Angle	High Pins		-0.03	Sloped
Rear Leg (side view)	Posty		0.40	Sickled
Rear Leg (rear view)	Hock-in		0.96	Straight
Foot Angle	Low Angle		0.09	Steep Angle
Feet & Leg Score	Low		0.47	High
Fore Udder	Loose		0.82	Strong
Rear Udder Height	Low		0.96	High
Rear Udder Width	Narrow		0.76	Wide
Udder Cleft	Weak		-0.56	Strong
Udder Depth	Deep		-0.01	Shallow
Front Teat Placement	Wide		-0.36	Close
Rear Teat Placement	Wide		-0.71	Close
Teat Length	Short		-0.32	Long



USDA-CDCB  
 Genetic Eval.  
 04-24  
 CDN Genetic  
 Eval. 04-24  
 Zoetis 04-24

# DIAMONDBACK\* RC



## 7HO12587 MR D APPLE DIAMONDBACK

**DOORMAN X TALENT X REGIMENT-RED** RC TP TC TY TV TL TD TE HH1T HH2T HH3T HH4T HH5T HH6T

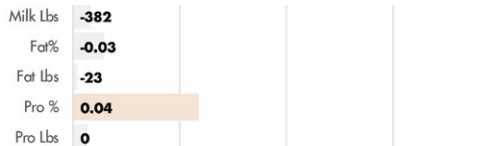
**HOLSTEIN** NASIS: 80FFL87 BETA CASEIN: A1A2 \$25 RRP  
 BPI: 12 OT: 107 MS: 107 MILKING SPEED: 102 TEMP: 104

DAM: MS DELICIOUS APPLE-RED-ET EX-94  
 7-02 2X 365D 21097 KGM 4.0% 836 KGF 3.1% 646 KGP  
 MGD: KHW REGIMENT APPLE-RED-ET EX-96  
 10-11 2X 365D 14415 KGM 4.5% 653 KGF 3.3% 482 KGP

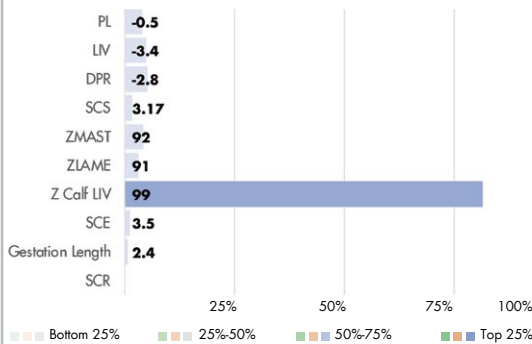
### INDEXES



### PRODUCTION



### HEALTH AND FERTILITY TRAITS



Wil-O-Mar Diamndbk Rose-Red EX-95

### PHYSICAL TRAIT EVALUATION

CDCB/HA Genetic Eval. 04-24  
 11564 dtrs. 3454 herds  
 99% Rel.

PTAT: 2.52 UDC: 1.91 FLC: 1.42 TPI: 1880

Stature	Short		1.85	Tall
Strength	Frail		1.74	Strong
Body Depth	Shallow		2.00	Deep
Dairy Form	Tight Ribbed		1.57	Open Ribbed
Rump Width	Narrow		2.28	Wide
Rump Angle	High Pins		-0.22	Sloped
Rear Leg (side view)	Posty		-0.24	Sickled
Rear Leg (rear view)	Hock-in		2.34	Straight
Foot Angle	Low Angle		2.59	Steep Angle
Feet & Leg Score	Low		1.46	High
Fore Udder	Loose		2.72	Strong
Rear Udder Height	Low		3.43	High
Rear Udder Width	Narrow		2.44	Wide
Udder Cleft	Weak		1.03	Strong
Udder Depth	Deep		0.90	Shallow
Front Teat Placement	Wide		1.14	Close
Rear Teat Placement	Wide		1.13	Close
Teat Length	Short		0.45	Long



IB/MACE-G 04-24  
 CDN Genetic  
 Eval. 04-24  
 Zoetis 04-24

# DRASTIC-P



462 BPI

7HO14163 **KINGS-RANSOM B DRASTIC-P-ET A2A2**

**BANDARES X POWERBALL-P X DORCY** TR PC TC TY TV TL TD TE HH1T HH2T HH3T HH4T HH5T HH6T

**HOLSTEIN** NASIS: 80FFND8 BETA CASEIN: A2A2 \$18 RRP

BPI: 462 OT: 105 MS: 97 MILKING SPEED: 103 TEMP: 100

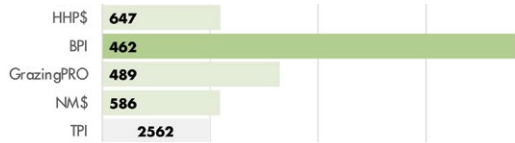
DAM: KINGS-RANSOM PBAL DREAMY-ET VG-87

1-11 3X 289D 10351 KGM 3.2% 332 KGF 3.2% 326 KGP

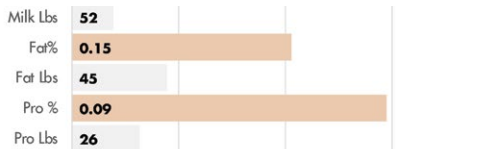
MGD: KINGS-RANSOM DORC DEXTRA-ET EX-94

6-11 3X 359D 13785 KGM 3.8% 524 KGF 3.0% 407 KGP

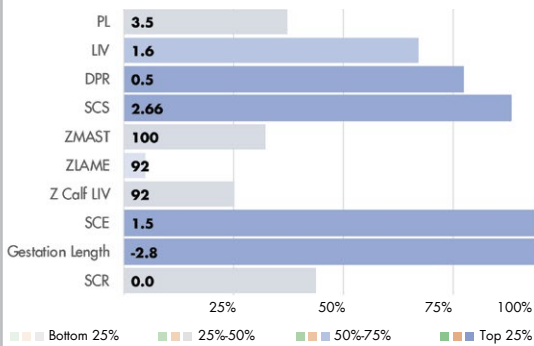
## INDEXES



## PRODUCTION



## HEALTH AND FERTILITY TRAITS



MGD: Kings-Ransom Dorc Dextra-ET EX-94

## PHYSICAL TRAIT EVALUATION

CDCB/HA Genetic Eval. 04-24  
1245 dtrs. 397 herds  
98% Rel.

PTAT: 0.95 UDC: 0.89 FLC: 0.25 TPI: 2562

Stature	Short	1.75	Tall
Strength	Frail	0.13	Strong
Body Depth	Shallow	0.15	Deep
Dairy Form	Tight Ribbed	0.35	Open Ribbed
Rump Width	Narrow	0.50	Wide
Rump Angle	High Pins	2.63	Sloped
Rear Leg (side view)	Posty	-0.45	Sickled
Rear Leg (rear view)	Hock-in	0.36	Straight
Foot Angle	Low Angle	0.78	Steep Angle
Feet & Leg Score	Low	0.67	High
Fore Udder	Loose	2.55	Strong
Rear Udder Height	Low	1.08	High
Rear Udder Width	Narrow	-0.20	Wide
Udder Cleft	Weak	-0.43	Strong
Udder Depth	Deep	3.05	Shallow
Front Teat Placement	Wide	0.34	Close
Rear Teat Placement	Wide	-0.09	Close
Teat Length	Short	-1.47	Long



IB/MACE-G 04-24  
CDN Genomic  
Eval. 04-24  
Zoetis 04-24

# DUDE



480 BPI

14HO16412 **MELARRY CONWAY DUDE-ET**

**CONWAY X TRY ME X FRAZZLED** TR PC TC TY TV TL TD TE HH1T HH2T HH3T HH4T HH5T HH6T

**HOLSTEIN** NASIS: 80FFUGV BETA CASEIN: A1A2 \$36 RRP \$75 SEXED

BPI: 480 OT: 99 MS: 103 MILKING SPEED: 102 TEMP: 100

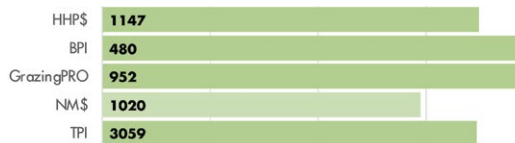
DAM: MELARRY TRY ME 1700-ET VG-88

2-03 2X 305D 12292 KGM 4.8% 585 KGF 3.6% 437 KGP

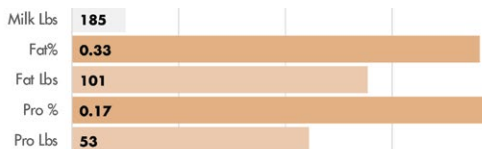
MGD: 840003146997818-ET GP-82

4-01 2X 365D 14075 KGM 4.0% 567 KGF 3.0% 425 KGP

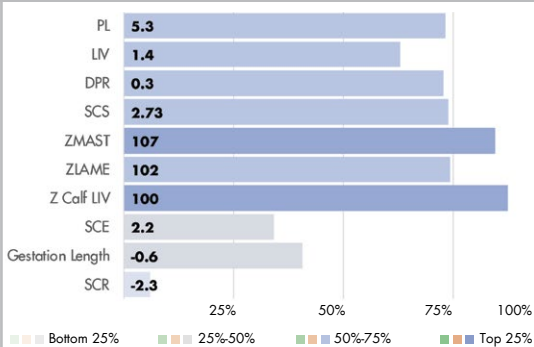
## INDEXES



## PRODUCTION



## HEALTH AND FERTILITY TRAITS



Paternal sister: Lars-Acres 22899 25544-ET VG-85



Dam: Melarry Try Me 1700-ET VG-88

## PHYSICAL TRAIT EVALUATION

CDCB/HA Genetic Eval. 04-24  
0 dtrs. 0 herds  
81% Rel.

PTAT: 1.81 UDC: 1.71 FLC: 1.28 TPI: 3059

Stature	Short	0.92	Tall
Strength	Frail	0.09	Strong
Body Depth	Shallow	0.30	Deep
Dairy Form	Tight Ribbed	0.93	Open Ribbed
Rump Width	Narrow	0.51	Wide
Rump Angle	High Pins	-0.51	Sloped
Rear Leg (side view)	Posty	0.72	Sickled
Rear Leg (rear view)	Hock-in	1.65	Straight
Foot Angle	Low Angle	0.87	Steep Angle
Feet & Leg Score	Low	1.36	High
Fore Udder	Loose	2.25	Strong
Rear Udder Height	Low	2.03	High
Rear Udder Width	Narrow	1.47	Wide
Udder Cleft	Weak	1.13	Strong
Udder Depth	Deep	2.00	Shallow
Front Teat Placement	Wide	1.13	Close
Rear Teat Placement	Wide	0.99	Close
Teat Length	Short	-0.69	Long



USDA-CDCB  
Genomic Eval.  
04-24  
CDN Genomic  
Eval. 04-24  
Zoetis 04-24



# ENCLAVE



447 BPI

7HO16067 WILRA SSI REGAL ENCLAVE-ET **A2A2**

**REGAL X LEGACY X SPECTRE** TR TP TM TC TY TV TL TD TE HH1T HH2T HH3T HH4T HH5T HH6T

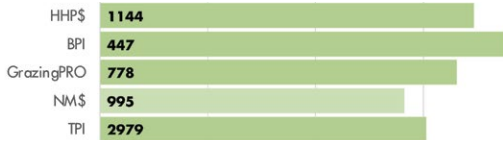
**HOLSTEIN** NASIS: 80FFUDG BETA CASEIN: A2A2 \$24 RRP \$65 SEXED  
 BPI: 447 OT: 99 MS: 100 MILKING SPEED: 102 TEMP: 100

DAM: WILRA SSI LEGACY 2013-ET

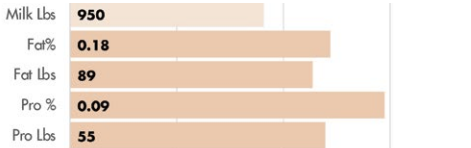
MGD: WILRA SPECTRE 1431-ET GP-82

5-02 3X 305D 17536 KGM 3.3% 571 KGF 3.1% 542 KGP

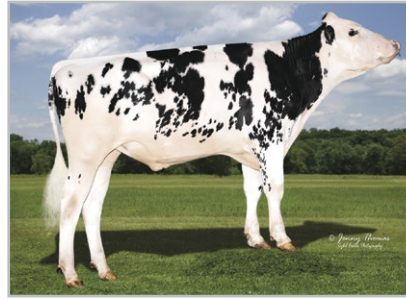
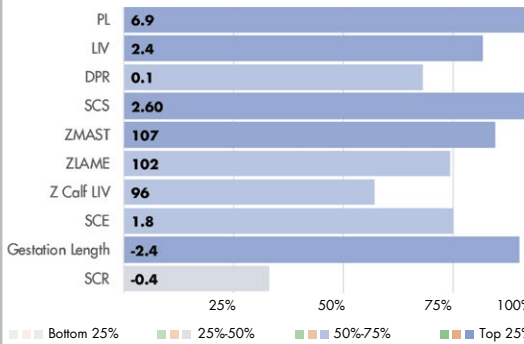
## INDEXES



## PRODUCTION



## HEALTH AND FERTILITY TRAITS



Dam: Wilra SSI Legacy 2013-ET GP-82

## PHYSICAL TRAIT EVALUATION

CDCB/HA Genetic Eval. 04-24  
 0 dtrs. 0 herds  
 80% Rel.

PTAT: 1.17 UDC: 1.73 FLC: -0.17 TPI: 2979

Stature	Short		0.59	Tall
Strength	Frail		0.21	Strong
Body Depth	Shallow		-0.34	Deep
Dairy Form	Tight Ribbed		0.04	Open Ribbed
Rump Width	Narrow		0.41	Wide
Rump Angle	High Pins		0.89	Sloped
Rear Leg (side view)	Posty		-0.53	Sickled
Rear Leg (rear view)	Hock-in		0.34	Straight
Foot Angle	Low Angle		0.30	Steep Angle
Feet & Leg Score	Low		-0.15	High
Fore Udder	Loose		2.26	Strong
Rear Udder Height	Low		1.84	High
Rear Udder Width	Narrow		1.87	Wide
Udder Cleft	Weak		0.61	Strong
Udder Depth	Deep		1.84	Shallow
Front Teat Placement	Wide		1.24	Close
Rear Teat Placement	Wide		0.91	Close
Teat Length	Short		-0.72	Long



USDA-CDCB  
 Genomic Eval.  
 04-24  
 CDN Genomic  
 Eval. 04-24  
 Zoetis 04-24

# EYE CANDY



7HO16104 MB-LUCKYLADY EYE CANDY-ET

**DELTA-LAMBDA X UNIX X DOORMAN** TR TP TC TY TV TL TD TE HH1T HH2T HH3T HH4T HH5T HH6T

**HOLSTEIN** NASIS: 80FFUCH BETA CASEIN: A1A2 \$40 RRP \$80 SEXED  
 BPI: 298 OT: 103 MS: 108 MILKING SPEED: 104 TEMP: 102

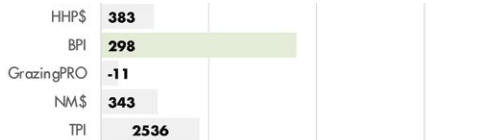
DAM: LADYROSE CAUGHT YOUR EYE-ET EX-92

2-01 2X 359D 11435 KGM 3.9% 450 KGF 3.2% 363 KGP

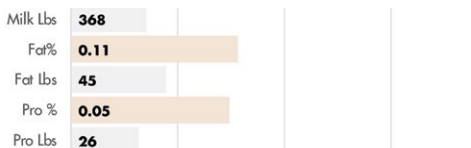
MGD: ROSEDALE ACHIEVERSLEGACY-ET VG-89

1-09 2X 365D 11999 KGM 5.1% 617 KGF 3.4% 411 KGP

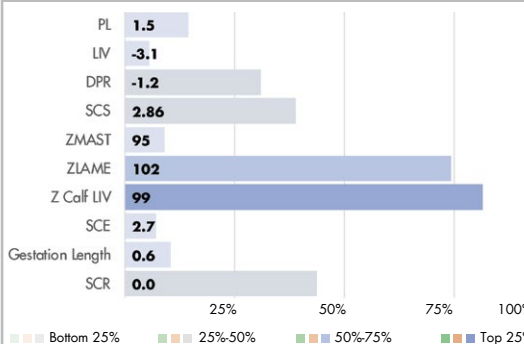
## INDEXES



## PRODUCTION



## HEALTH AND FERTILITY TRAITS



Dam: Ladyrose Caught Your Eye-ET EX-94

## PHYSICAL TRAIT EVALUATION

CDCB/HA Genetic Eval. 04-24  
 0 dtrs. 0 herds  
 81% Rel.

PTAT: 3.17 UDC: 2.59 FLC: 1.35 TPI: 2536

Stature	Short		2.64	Tall
Strength	Frail		1.55	Strong
Body Depth	Shallow		2.03	Deep
Dairy Form	Tight Ribbed		2.27	Open Ribbed
Rump Width	Narrow		2.43	Wide
Rump Angle	High Pins		-0.20	Sloped
Rear Leg (side view)	Posty		0.45	Sickled
Rear Leg (rear view)	Hock-in		1.67	Straight
Foot Angle	Low Angle		2.22	Steep Angle
Feet & Leg Score	Low		1.82	High
Fore Udder	Loose		3.19	Strong
Rear Udder Height	Low		3.95	High
Rear Udder Width	Narrow		3.80	Wide
Udder Cleft	Weak		1.75	Strong
Udder Depth	Deep		2.07	Shallow
Front Teat Placement	Wide		1.09	Close
Rear Teat Placement	Wide		1.23	Close
Teat Length	Short		-0.36	Long



USDA-CDCB  
 Genomic Eval.  
 04-24  
 CDN Genomic  
 Eval. 04-24  
 Zoetis 04-24

# FIGARO



250HO16074 OCD PERFECT FIGARO-ET

**PARFECT X COFFEE X BURLEY** TR TP TC TY TV TL TD TE HH1T HH2T HH3T HH4T HH5T HH6T

**HOLSTEIN** NASIS: 80FFUHV BETA CASEIN: A1A2 \$35 RRP \$75 SEXED

BPI: 352 OT: 98 MS: 101 MILKING SPEED: 100 TEMP: 100

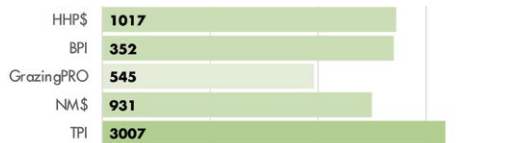
DAM: OCD COFFEE FRANCES 47695-ET VG-88

3-01 3X 365D 18048 KGM 4.0% 725 KGF 3.2% 575 KGP

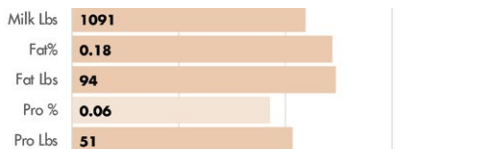
MGD: OCD BURLEY FRANCES 41330-ET EX-91

5-07 3X 365D 18937 KGM 4.5% 858 KGF 3.3% 630 KGP

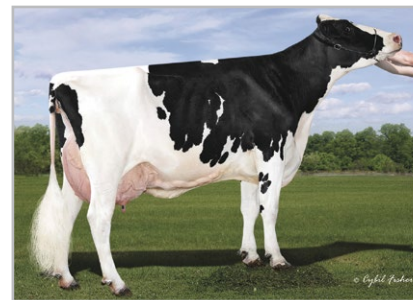
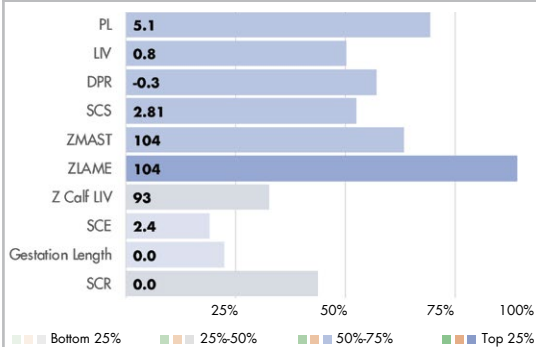
## INDEXES



## PRODUCTION



## HEALTH AND FERTILITY TRAITS



MGD: Ocd Burley Frances 41330-ET EX-91

## PHYSICAL TRAIT EVALUATION

CDCB/HA Genetic Eval. 04-24  
0 dtrs. 0 herds  
81% Rel.

PTAT: 2.18 UDC: 2.32 FLC: 1.25 TPI: 3007

Stature	Short	0.88	Tall
Strength	Frail	0.46	Strong
Body Depth	Shallow	0.20	Deep
Dairy Form	Tight Ribbed	0.72	Open Ribbed
Rump Width	Narrow	1.74	Wide
Rump Angle	High Pins	-1.04	Sloped
Rear Leg (side view)	Posty	0.00	Sickled
Rear Leg (rear view)	Hock-in	2.17	Straight
Foot Angle	Low Angle	1.46	Steep Angle
Feet & Leg Score	Low	1.09	High
Fore Udder	Loose	2.36	Strong
Rear Udder Height	Low	3.17	High
Rear Udder Width	Narrow	2.93	Wide
Udder Cleft	Weak	0.96	Strong
Udder Depth	Deep	1.97	Shallow
Front Teat Placement	Wide	0.41	Close
Rear Teat Placement	Wide	0.67	Close
Teat Length	Short	-0.14	Long



USDA-CDCB  
Genomic Eval.  
04-24  
CDN Genomic  
Eval. 04-24  
Zoetis 04-24

# FIONN



7HO16820 T-SPRUCE F BITE FIONN-ET **A2A2**

**FROST BITE X EINSTEIN X NUGENT** TR TP TM TC TY TV TL TD TE HH1T HH2T HH3T HH4T HH5T HH6T

**HOLSTEIN** NASIS: 80FFVG5 BETA CASEIN: A2A2 \$32 RRP \$95 SEXED

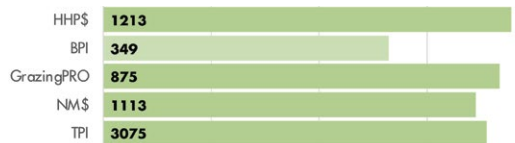
BPI: 349 OT: 96 MS: 101 MILKING SPEED: 100 TEMP: 100

DAM: T-SPRUCE EINSTEIN 14632-ET

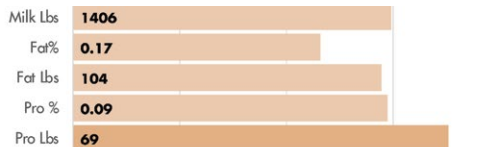
MGD: T-SPRUCE NUGENT 12660-ET VG-85

3-08 3X 336D 16016 KGM 4.0% 635 KGF 3.5% 556 KGP

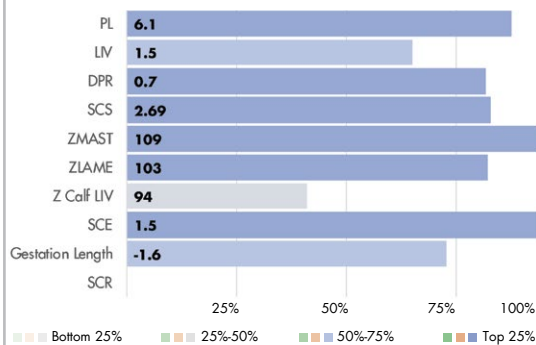
## INDEXES



## PRODUCTION



## HEALTH AND FERTILITY TRAITS



Family member: Adaway Granada 2721-ET GP-80

## PHYSICAL TRAIT EVALUATION

CDCB/HA Genetic Eval. 04-24  
0 dtrs. 0 herds  
79% Rel.

PTAT: 0.75 UDC: 1.23 FLC: -0.39 TPI: 3075

Stature	Short	-0.72	Tall
Strength	Frail	0.00	Strong
Body Depth	Shallow	-0.44	Deep
Dairy Form	Tight Ribbed	0.17	Open Ribbed
Rump Width	Narrow	1.12	Wide
Rump Angle	High Pins	-0.49	Sloped
Rear Leg (side view)	Posty	0.20	Sickled
Rear Leg (rear view)	Hock-in	-0.97	Straight
Foot Angle	Low Angle	-0.51	Steep Angle
Feet & Leg Score	Low	-0.38	High
Fore Udder	Loose	0.81	Strong
Rear Udder Height	Low	1.48	High
Rear Udder Width	Narrow	1.88	Wide
Udder Cleft	Weak	0.48	Strong
Udder Depth	Deep	0.15	Shallow
Front Teat Placement	Wide	0.22	Close
Rear Teat Placement	Wide	0.53	Close
Teat Length	Short	-0.28	Long



USDA-CDCB  
Genomic Eval.  
04-24  
CDN Genomic  
Eval. 04-24  
Zoetis 04-24



# FREEBORN



564 BPI

HOLSTEIN

507HO13981 SANDY-VALLEY BD FREEBORN-ET **A2A2**

**BANDARES X KINGBOY X SUPERSIRE** TR TP TC TY TV TL TD TE HH1T HH2T HH3T HH4T HH5T HH6T

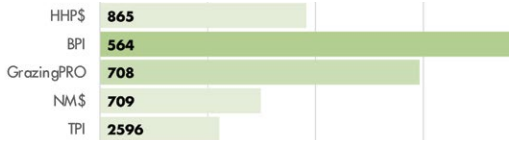
**HOLSTEIN** NASIS: 80FFNDB BETA CASEIN: A2A2 \$20 RRP \$45 SEXED

BPI: 564 OT: 96 MS: 102 MILKING SPEED: 104 TEMP: 101

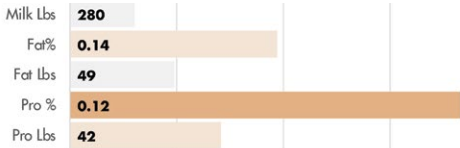
DAM: SANDY-VALLEY KB LIBERTY-ET

MGD: SANDY-VALLEY SS PSYCH-ET

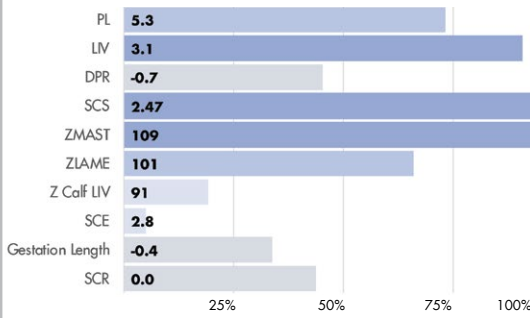
## INDEXES



## PRODUCTION



## HEALTH AND FERTILITY TRAITS



Ladys-Manor Freborn Lilly GP-81

## PHYSICAL TRAIT EVALUATION

CDCB/HA Genetic Eval. 04-24  
238 dtrs. 65 herds  
97% Rel.

PTAT: -0.03 UDC: 1.01 FLC: -0.95 TPI: 2596

Stature	Short	-0.63	Tall
Strength	Frail	-0.50	Strong
Body Depth	Shallow	-1.40	Deep
Dairy Form	Tight Ribbed	-1.51	Open Ribbed
Rump Width	Narrow	0.06	Wide
Rump Angle	High Pins	-0.43	Sloped
Rear Leg (side view)	Posty	-0.09	Sickled
Rear Leg (rear view)	Hock-in	-0.56	Straight
Foot Angle	Low Angle	-0.55	Steep Angle
Feet & Leg Score	Low	-1.17	High
Fore Udder	Loose	1.64	Strong
Rear Udder Height	Low	0.34	High
Rear Udder Width	Narrow	0.49	Wide
Udder Cleft	Weak	0.25	Strong
Udder Depth	Deep	1.38	Shallow
Front Teat Placement	Wide	0.58	Close
Rear Teat Placement	Wide	0.23	Close
Teat Length	Short	-0.43	Long



IB/MACE-G 04-24  
CDN Genomic  
Eval. 04-24  
Zoetis 04-24

# GRIFF



14HO07796 WELCOME SILVER GRIFF-ET **A2A2**

**SILVER X SUPERSIRE X MAN-O-MAN** TR TP TM TC TY TV TL TD TE HH1T HH2T HH3T HH4T HH5T HH6T

**HOLSTEIN** NASIS: 80FFMDL BETA CASEIN: A2A2 \$20 RRP \$50 SEXED

BPI: 315 OT: 103 MS: 102 MILKING SPEED: 101 TEMP: 101

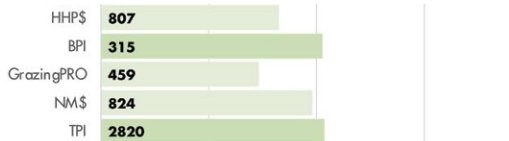
DAM: WELCOME SUPERSIRE GALES-ET VG-86

4-00 3X 277D 14755 KGM 4.6% 674 KGF 3.1% 454 KGP

MGD: VISION-GEN MANOMAN GILDIE VG-87

4-10 3X 355D 16624 KGM 4.4% 729 KGF 3.1% 520 KGP

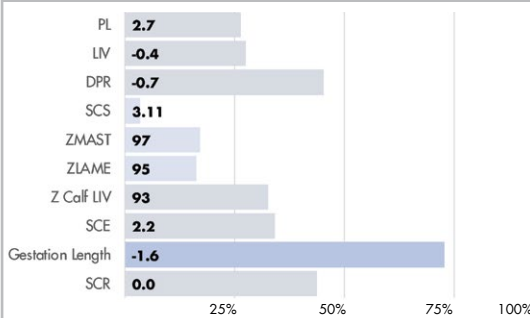
## INDEXES



## PRODUCTION



## HEALTH AND FERTILITY TRAITS



Griff daughters; Yarrimbah, Mathoura NSW

## PHYSICAL TRAIT EVALUATION

CDCB/HA Genetic Eval. 04-24  
2520 dtrs. 320 herds  
99% Rel.

PTAT: 0.74 UDC: 0.66 FLC: 0.27 TPI: 2820

Stature	Short	0.86	Tall
Strength	Frail	0.13	Strong
Body Depth	Shallow	0.71	Deep
Dairy Form	Tight Ribbed	1.57	Open Ribbed
Rump Width	Narrow	-0.78	Wide
Rump Angle	High Pins	0.25	Sloped
Rear Leg (side view)	Posty	0.16	Sickled
Rear Leg (rear view)	Hock-in	0.06	Straight
Foot Angle	Low Angle	0.46	Steep Angle
Feet & Leg Score	Low	0.54	High
Fore Udder	Loose	0.08	Strong
Rear Udder Height	Low	2.53	High
Rear Udder Width	Narrow	0.87	Wide
Udder Cleft	Weak	0.15	Strong
Udder Depth	Deep	-0.07	Shallow
Front Teat Placement	Wide	0.39	Close
Rear Teat Placement	Wide	1.01	Close
Teat Length	Short	1.38	Long



IB/MACE-G 04-24  
CDN Genomic  
Eval. 04-24  
Zoetis 04-24

# HADES



464 BPI

## 7HO17131 COOKIECUTTER HAYK HADES-ET

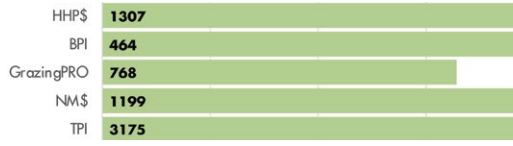
**HAYK X HIGHJUMP X BIG AL** TR TP TM TC TY TV TL TD TE HH5C HH1T HH2T HH3T HH4T HH6T

**HOLSTEIN** NASIS: 80FFVRO BETA CASEIN: A1A2 \$45 RRP \$80 SEXED  
 BPI: 464 OT: 98 MS: 104 MILKING SPEED: 102 TEMP: 103

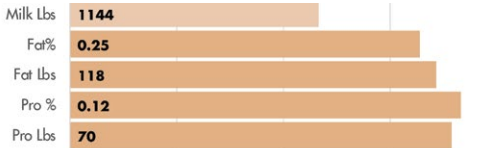
DAM: COOKIECUTTER HJMP HALISE-ET

MGD: COOKIECUTTER AL HAUSEN-ET VG-88  
 3-01 3X 310D 12819 KGM 5.6% 718 KGF 3.8% 482 KGP

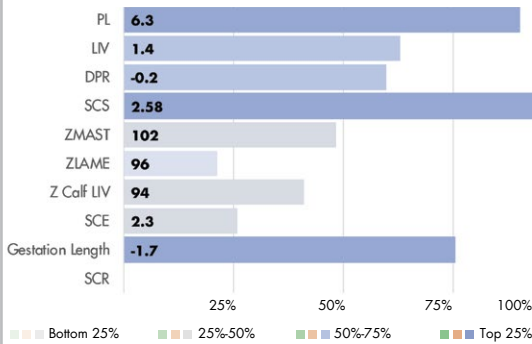
### INDEXES



### PRODUCTION



### HEALTH AND FERTILITY TRAITS



PGD: Welcome-Tel Tahiti Huma-ET VG-87



MGD: Cookiecutter Al Hausen-ET VG-88

### PHYSICAL TRAIT EVALUATION

CDCB/HA Genetic Eval. 04-24  
0 dtrs. 0 h

PTAT: 1.39 UDC: 1.69 FLC: 0.21 TPI: 3175

Stature	Short	0.70	Tall
Strength	Frail	0.33	Strong
Body Depth	Shallow	0.41	Deep
Dairy Form	Tight Ribbed	1.24	Open Ribbed
Rump Width	Narrow	0.06	Wide
Rump Angle	High Pins	-0.01	Sloped
Rear Leg (side view)	Posty	0.06	Sickled
Rear Leg (rear view)	Hock-in	-0.13	Straight
Foot Angle	Low Angle	0.55	Steep Angle
Feet & Leg Score	Low	0.46	High
Fore Udder	Loose	2.08	Strong
Rear Udder Height	Low	2.32	High
Rear Udder Width	Narrow	2.27	Wide
Udder Cleft	Weak	0.36	Strong
Udder Depth	Deep	1.18	Shallow
Front Teat Placement	Wide	0.27	Close
Rear Teat Placement	Wide	0.42	Close
Teat Length	Short	0.03	Long



USDA-CDCB  
Genomic Eval.  
04-24  
CDN Genomic  
Eval. 04-24  
Zoetis 04-24

# HANCOCK



## 250HO14579 SIEMERS DOC HANCOCK A2A2

**DOC X MONTEREY X MOGUL** TR TP TM TC TY TV TL TD TE HH1T HH2T HH3T HH4T HH5T HH6T

**HOLSTEIN** NASIS: 80FFPEV BETA CASEIN: A2A2 \$22 RRP \$55 SEXED  
 BPI: 251 OT: 106 MS: 113 MILKING SPEED: 100 TEMP: 101

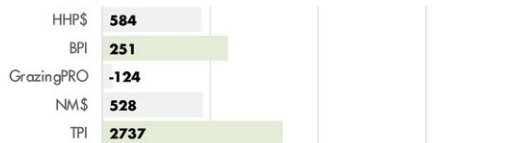
DAM: SIEMERS MONTEREY HANAN-ET VG-85

2-00 3X 156D 5656 KGM 4.1% 235 KGF 3.2% 178 KGP

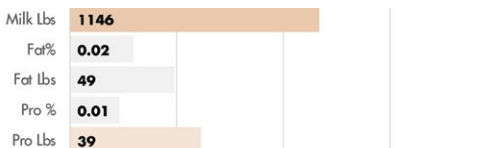
MGD: COOKIECUTTER MOG HANKER-ET EX-94

7-03 2X 365D 19096 KGM 3.9% 742 KGF 3.2% 612 KGP

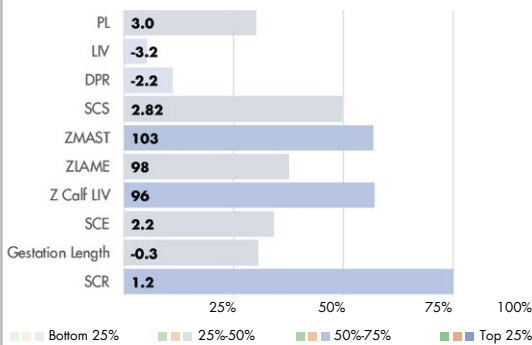
### INDEXES



### PRODUCTION



### HEALTH AND FERTILITY TRAITS



Kings-Ransom Hancock Rapp VG-89

### PHYSICAL TRAIT EVALUATION

CDCB/HA Genetic Eval. 04-24  
1753 dtrs. 546 herds  
99% Rel.

PTAT: 3.62 UDC: 3.38 FLC: 2.51 TPI: 2737

Stature	Short	1.99	Tall
Strength	Frail	0.25	Strong
Body Depth	Shallow	1.35	Deep
Dairy Form	Tight Ribbed	3.43	Open Ribbed
Rump Width	Narrow	2.41	Wide
Rump Angle	High Pins	-1.89	Sloped
Rear Leg (side view)	Posty	1.54	Sickled
Rear Leg (rear view)	Hock-in	2.68	Straight
Foot Angle	Low Angle	3.01	Steep Angle
Feet & Leg Score	Low	2.80	High
Fore Udder	Loose	3.48	Strong
Rear Udder Height	Low	5.02	High
Rear Udder Width	Narrow	4.69	Wide
Udder Cleft	Weak	2.67	Strong
Udder Depth	Deep	2.16	Shallow
Front Teat Placement	Wide	2.37	Close
Rear Teat Placement	Wide	2.75	Close
Teat Length	Short	1.20	Long



IB/MACE-G 04-24  
CDN Genomic  
Eval. 04-24  
Zoetis 04-24



# HANDSHAKE



406 BPI

7HO15524 SIEMERS HANDSHAKE 32706-ET **A2A2**

**TROPIC X DELTA-LAMBDA X MONTEREY** TR TP TC TY TV TL TD TE HH1T HH2T HH3T HH4T HH5T HH6T

**HOLSTEIN** NASIS: 8OFFSHS BETA CASEIN: A2A2 \$14 RRP \$40 SEXED

BPI: 406 OT: 101 MS: 107 MILKING SPEED: 100 TEMP: 103

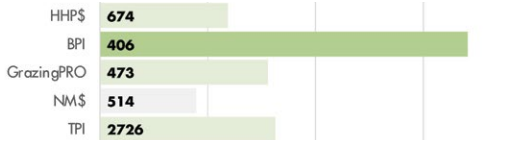
DAM: SIEMERS LMB HANINA 28089-ET GP-83

2-00 3X 295D 11353 KGM 4.5% 515 KGF 3.5% 397 KGP

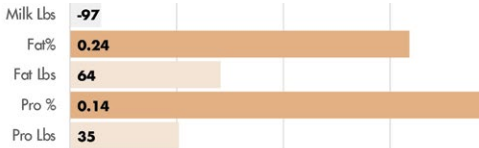
MGD: SIEMERS MONTEREY HANINA-ET EX-91

4-04 3X 365D 18262 KGM 4.2% 776 KGF 3.3% 602 KGP

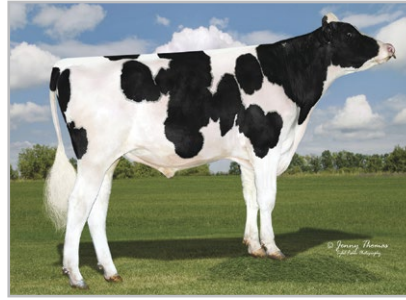
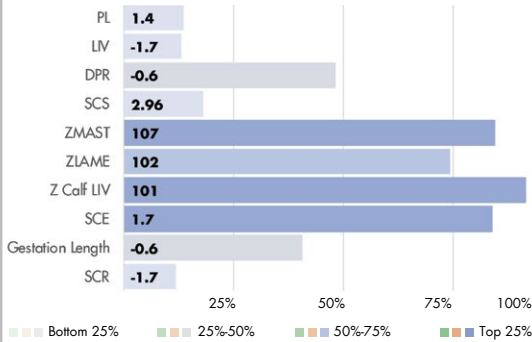
## INDEXES



## PRODUCTION



## HEALTH AND FERTILITY TRAITS



MGD: Cookiecutter Mog Hanker-ET EX-94

## PHYSICAL TRAIT EVALUATION

CDCB/HA Genetic Eval. 04-24  
0 dtrs. 0 herds  
82% Rel.

PTAT: 2.92 UDC: 2.45 FLC: 1.87 TPI: 2726

Stature	Short	2.32	Tall
Strength	Frail	1.20	Strong
Body Depth	Shallow	1.43	Deep
Dairy Form	Tight Ribbed	1.72	Open Ribbed
Rump Width	Narrow	1.78	Wide
Rump Angle	High Pins	-1.30	Sloped
Rear Leg (side view)	Posty	-0.82	Sickled
Rear Leg (rear view)	Hock-in	2.77	Straight
Foot Angle	Low Angle	2.87	Steep Angle
Feet & Leg Score	Low	2.04	High
Fore Udder	Loose	3.15	Strong
Rear Udder Height	Low	2.99	High
Rear Udder Width	Narrow	3.40	Wide
Udder Cleft	Weak	2.22	Strong
Udder Depth	Deep	2.58	Shallow
Front Teat Placement	Wide	2.05	Close
Rear Teat Placement	Wide	2.40	Close
Teat Length	Short	-1.30	Long



USDA-CDCB  
Genomic Eval.  
04-24  
CDN Genomic  
Eval. 04-24  
Zoetis 04-24

# ISAAC



440 BPI

7HO15966 LA-CA-DE-LE T ISAAC 8731-ET **A2A2**

**TAOS X LANGLEY X DUKE** TR TP TC TY TV TL TD TE HH1T HH2T HH3T HH4T HH5T HH6T

**HOLSTEIN** NASIS: 8OFFTU5 BETA CASEIN: A2A2 \$30 RRP \$60 SEXED

BPI: 440 OT: 100 MS: 102 MILKING SPEED: 104 TEMP: 101

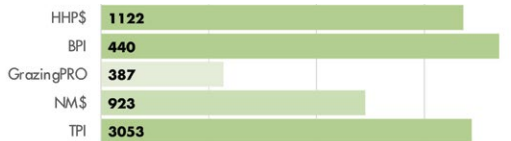
DAM: LA-CA-DE-LE ISABEL 7674-ET VG-85

2-07 3X 365D 12728 KGM 4.4% 562 KGF 3.3% 424 KGP

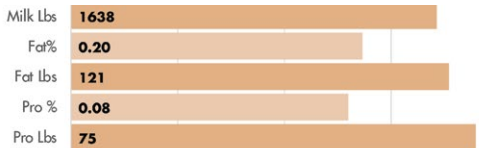
MGD: LA-CA-DE-LE DUKE INGRID GP-83

3-05 3X 330D 13617 KGM 3.4% 464 KGF 3.3% 448 KGP

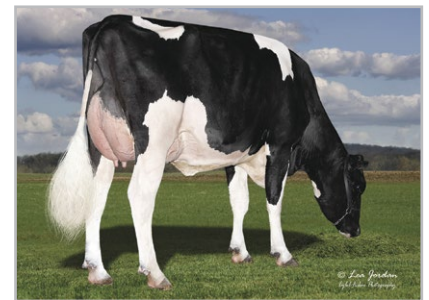
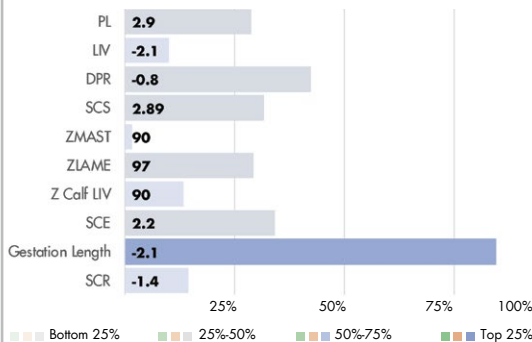
## INDEXES



## PRODUCTION



## HEALTH AND FERTILITY TRAITS



Paternal sister: S-SI Taos 10600 1721-ET GP-84

## PHYSICAL TRAIT EVALUATION

CDCB/HA Genetic Eval. 04-24  
0 dtrs. 0 herds  
81% Rel.

PTAT: 1.98 UDC: 1.43 FLC: 0.52 TPI: 3053

Stature	Short	2.44	Tall
Strength	Frail	1.63	Strong
Body Depth	Shallow	1.26	Deep
Dairy Form	Tight Ribbed	0.80	Open Ribbed
Rump Width	Narrow	2.12	Wide
Rump Angle	High Pins	-0.20	Sloped
Rear Leg (side view)	Posty	0.62	Sickled
Rear Leg (rear view)	Hock-in	1.01	Straight
Foot Angle	Low Angle	1.13	Steep Angle
Feet & Leg Score	Low	1.00	High
Fore Udder	Loose	1.95	Strong
Rear Udder Height	Low	1.71	High
Rear Udder Width	Narrow	2.17	Wide
Udder Cleft	Weak	1.62	Strong
Udder Depth	Deep	1.98	Shallow
Front Teat Placement	Wide	1.45	Close
Rear Teat Placement	Wide	1.77	Close
Teat Length	Short	0.34	Long



USDA-CDCB  
Genomic Eval.  
04-24  
CDN Genomic  
Eval. 04-24  
Zoetis 04-24

# KNOWLESS



250HO16525 DULET KNOWLESS

**PERFECT X DELTA-LAMBDA X DIAMOND**

TR TP TC TY TV TL TD TE HH1T HH2T HH3T HH4T HH5T HH6T

**HOLSTEIN** NASIS: 70FFU73 BETA CASEIN: A1A2 \$40 RRP \$75 SEXED

DAM: DULET D-LAMBDA KATRINA VG-87

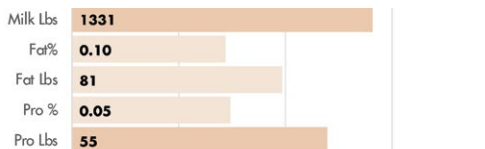
BPI: 272 OT: 106 MS: 108 MILKING SPEED: 101 TEMP: 102

MGD: DULET DIAMOND KARVY

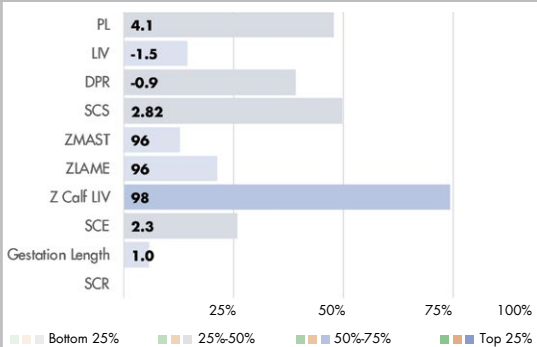
## INDEXES



## PRODUCTION



## HEALTH AND FERTILITY TRAITS



Dam: Dulet D-Lambda Katrina VG-87

## PHYSICAL TRAIT EVALUATION

CDCB/HA Genetic Eval. 04-24  
0 dtrs. 0 herds  
80% Rel.

PTAT: 2.79 UDC: 2.42 FLC: 1.16 TPI: 2916

Stature	Short	1.70	Tall
Strength	Frail	1.24	Strong
Body Depth	Shallow	1.17	Deep
Dairy Form	Tight Ribbed	1.50	Open Ribbed
Rump Width	Narrow	2.41	Wide
Rump Angle	High Pins	0.28	Sloped
Rear Leg (side view)	Posty	-0.61	Sickled
Rear Leg (rear view)	Hock-in	2.33	Straight
Foot Angle	Low Angle	1.64	Steep Angle
Feet & Leg Score	Low	1.18	High
Fore Udder	Loose	2.50	Strong
Rear Udder Height	Low	3.50	High
Rear Udder Width	Narrow	3.84	Wide
Udder Cleft	Weak	1.81	Strong
Udder Depth	Deep	1.50	Shallow
Front Teat Placement	Wide	0.98	Close
Rear Teat Placement	Wide	1.63	Close
Teat Length	Short	0.61	Long



USDA-CDCB  
Genomic Eval.  
04-24  
CDN Genomic  
Eval. 04-24  
Zoetis 04-24

# LANCASTER



250HO16101 CHERRY-LILY GD LANCASTER-ET **A2A2**

**GAMEDAY X LEGACY X PINNACLE**

TR TP TC TY TV TL TD MW HH1T HH2T HH3T HH4T HH5T HH6T

DAM: CHERRYPENCOL L LALA-ET VG-85

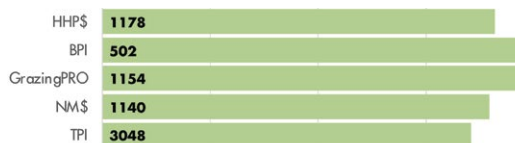
**HOLSTEIN** NASIS: 80FFUBV BETA CASEIN: A2A2 \$24 RRP

3-00 3X 288D 12637 KGM 4.6% 584 KGF 3.5% 438 KGP

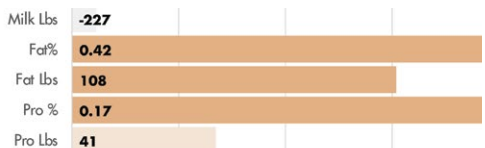
BPI: 502 OT: 97 MS: 100 MILKING SPEED: 101 TEMP: 101

MGD: CHERRYPENCOL LASS-ET

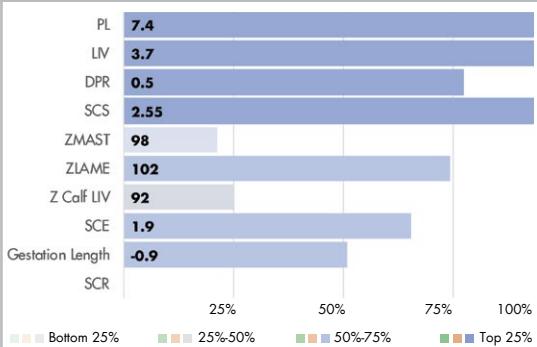
## INDEXES



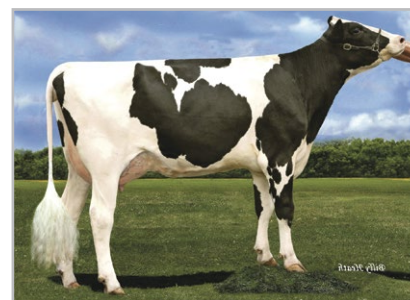
## PRODUCTION



## HEALTH AND FERTILITY TRAITS



Paternal sister: Kings-Ransom G Deckedout-ET VG-87



MGD: Cherry-Acres Jedi Lauri-ET VG-85

## PHYSICAL TRAIT EVALUATION

CDCB/HA Genetic Eval. 04-24  
0 dtrs. 0 herds  
81% Rel.

PTAT: 1.09 UDC: 1.93 FLC: 0.19 TPI: 3048

Stature	Short	-0.28	Tall
Strength	Frail	-0.66	Strong
Body Depth	Shallow	-1.17	Deep
Dairy Form	Tight Ribbed	0.02	Open Ribbed
Rump Width	Narrow	0.20	Wide
Rump Angle	High Pins	-1.06	Sloped
Rear Leg (side view)	Posty	-0.28	Sickled
Rear Leg (rear view)	Hock-in	-0.44	Straight
Foot Angle	Low Angle	0.77	Steep Angle
Feet & Leg Score	Low	0.23	High
Fore Udder	Loose	2.55	Strong
Rear Udder Height	Low	2.24	High
Rear Udder Width	Narrow	1.88	Wide
Udder Cleft	Weak	0.07	Strong
Udder Depth	Deep	1.89	Shallow
Front Teat Placement	Wide	1.07	Close
Rear Teat Placement	Wide	0.65	Close
Teat Length	Short	-2.19	Long



USDA-CDCB  
Genomic Eval.  
04-24  
CDN Genomic  
Eval. 04-24  
Zoetis 04-24



# LENNOX



399 BPI

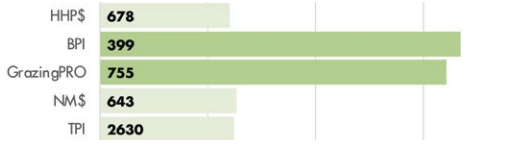
507HO15463 CHERRYPENCOL L LENNOX-ET

LEGACY X ROLAN X JEDI TR TP TC TY TV TL TD TE HH1T HH2T HH3T HH4T HH5T HH6T

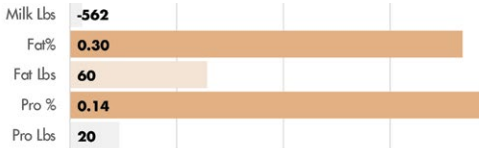
**HOLSTEIN** NASIS: 80FFSHN BETA CASEIN: A1A2 \$18 RRP  
BPI: 399 OT: 101 MS: 102 MILKING SPEED: 102 TEMP: 101

DAM: CHERRYPENCOL LEE-ET EX-93  
4-10 2X 270D 12174 KGM 3.7% 447 KGF 3.3% 401 KGP  
MGD: CHERRY-ACRES JEDI LAURI-ET

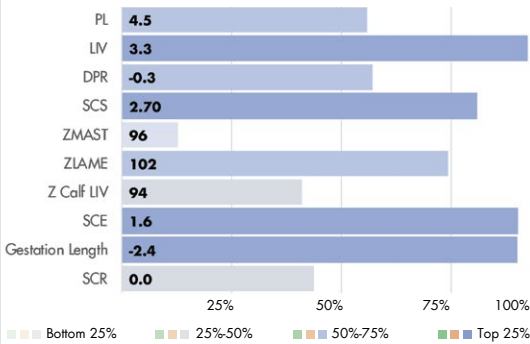
## INDEXES



## PRODUCTION



## HEALTH AND FERTILITY TRAITS



5th dam: Tiger-Lily Planet Limbo VG-85



MGD: Cherry-Acres Jedi Lauri-ET VG-85

## PHYSICAL TRAIT EVALUATION

PTAT: 1.18 UDC: 2.13 FLC: -0.36 TPI: 2630

CDCB/HA Genetic Eval. 04-24  
20 dtrs. 10 herds  
87% Rel.

Stature	Short		0.55	Tall
Strength	Frail		-0.42	Strong
Body Depth	Shallow		-0.75	Deep
Dairy Form	Tight Ribbed		0.12	Open Ribbed
Rump Width	Narrow		0.53	Wide
Rump Angle	High Pins		-0.45	Sloped
Rear Leg (side view)	Posty		-1.30	Sickled
Rear Leg (rear view)	Hock-in		-0.69	Straight
Foot Angle	Low Angle		0.64	Steep Angle
Feet & Leg Score	Low		-0.09	High
Fore Udder	Loose		2.73	Strong
Rear Udder Height	Low		2.35	High
Rear Udder Width	Narrow		1.71	Wide
Udder Cleft	Weak		1.04	Strong
Udder Depth	Deep		2.46	Shallow
Front Teat Placement	Wide		0.78	Close
Rear Teat Placement	Wide		0.95	Close
Teat Length	Short		-0.22	Long



USDA-CDCB  
Genomic Eval.  
04-24  
CDN Genomic  
Eval. 04-24  
Zoetis 04-24

# LUDLOW



390 BPI

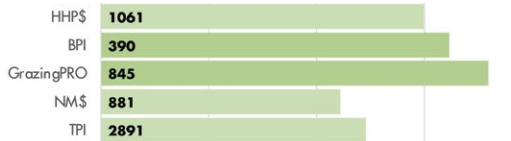
250HO15792 HOUIN S-S-I AHEAD LUDLOW-ET A2A2

AHEAD X LEGACY X SUPERSRING TR TP TC TY TV TL TD TE HH1T HH2T HH3T HH4T HH5T HH6T

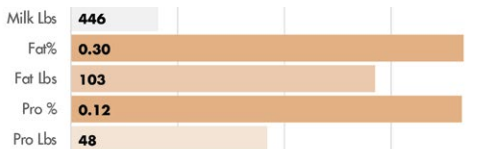
**HOLSTEIN** NASIS: 80FFTU6 BETA CASEIN: A2A2 \$18 RRP  
BPI: 390 OT: 99 MS: 98 MILKING SPEED: 101 TEMP: 100

DAM: HOUIN S-S-I 16 359-ET  
2-00 3X 305D 11494 KGM 4.2% 484 KGF 3.6% 419 KGP  
MGD: BADGER S-S-I 7467 16-ET GP-83  
2-00 3X 305D 16316 KGM 3.8% 622 KGF 3.2% 517 KGP

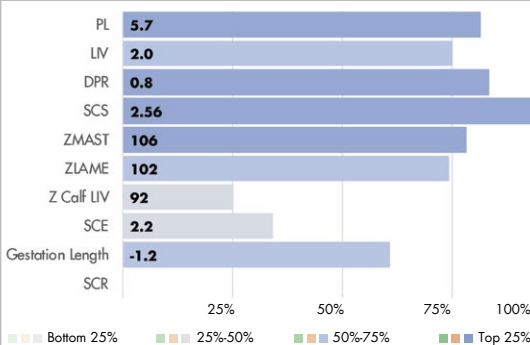
## INDEXES



## PRODUCTION



## HEALTH AND FERTILITY TRAITS



4th dam: Plain-Knoll Mogul Mariah VG-88

## PHYSICAL TRAIT EVALUATION

PTAT: 0.63 UDC: 0.61 FLC: -0.30 TPI: 2891

CDCB/HA Genetic Eval. 04-24  
0 dtrs. 0 herds  
81% Rel.

Stature	Short		1.14	Tall
Strength	Frail		0.78	Strong
Body Depth	Shallow		0.28	Deep
Dairy Form	Tight Ribbed		0.13	Open Ribbed
Rump Width	Narrow		1.24	Wide
Rump Angle	High Pins		0.34	Sloped
Rear Leg (side view)	Posty		0.70	Sickled
Rear Leg (rear view)	Hock-in		-0.08	Straight
Foot Angle	Low Angle		0.12	Steep Angle
Feet & Leg Score	Low		-0.01	High
Fore Udder	Loose		1.17	Strong
Rear Udder Height	Low		0.56	High
Rear Udder Width	Narrow		0.79	Wide
Udder Cleft	Weak		0.62	Strong
Udder Depth	Deep		1.21	Shallow
Front Teat Placement	Wide		0.42	Close
Rear Teat Placement	Wide		0.50	Close
Teat Length	Short		-0.83	Long



USDA-CDCB  
Genomic Eval.  
04-24  
CDN Genomic  
Eval. 04-24  
Zoetis 04-24

# LUXURY



436 BPI

## 7HO16080 OCD SUPERCHARGE LUXURY-ET

**SUPERCHARGE X RENEGADE X BRENNAN** TR TP TC TY TV TL TD TE HH1T HH2T HH3T HH4T HH5T HH6T

**HOLSTEIN** NASIS: 80FFUCL BETA CASEIN: A1A2 \$18 RRP

BPI: 436 OT: 96 MS: 99 MILKING SPEED: 100 TEMP: 100

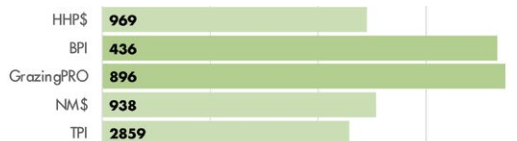
DAM: OCD RENEGAD LAVAGE 52753-ET VG-87

3-06 3X 304D 16275 KGM 4.2% 679 KGF 3.3% 541 KGP

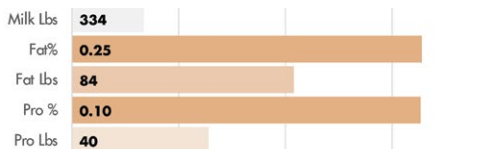
MGD: OCD BRENNAN LAVAGE 44817-ET GP-84

4-03 3X 365D 18402 KGM 3.2% 594 KGF 3.0% 552 KGP

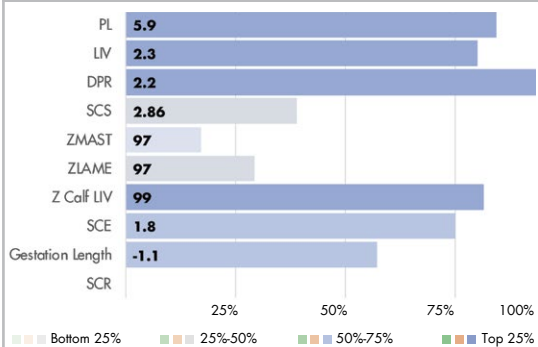
### INDEXES



### PRODUCTION



### HEALTH AND FERTILITY TRAITS



Paternal sister: Lars-Acres Super Flizie-ET



4th dam: Wcd-Zbw Supersire Lavage-ET VG-86

### PHYSICAL TRAIT EVALUATION

CDCB/HA Genetic Eval. 04-24  
0 dtrs. 0 herds  
81% Rel.

PTAT: 0.42 UDC: 1.18 FLC: -0.03 TPI: 2859

Trait	Value	Scale
Stature	Short	0.22 Tall
Strength	Frail	-0.77 Strong
Body Depth	Shallow	-1.18 Deep
Dairy Form	Tight Ribbed	0.02 Open Ribbed
Rump Width	Narrow	-0.87 Wide
Rump Angle	High Pins	-0.75 Sloped
Rear Leg (side view)	Posty	-0.62 Sickled
Rear Leg (rear view)	Hock-in	0.13 Straight
Foot Angle	Low Angle	0.70 Steep Angle
Feet & Leg Score	Low	-0.04 High
Fore Udder	Loose	1.64 Strong
Rear Udder Height	Low	1.37 High
Rear Udder Width	Narrow	0.88 Wide
Udder Cleft	Weak	0.03 Strong
Udder Depth	Deep	1.72 Shallow
Front Teat Placement	Wide	0.12 Close
Rear Teat Placement	Wide	-0.07 Close
Teat Length	Short	-0.66 Long



USDA-CDCB  
Genomic Eval.  
04-24  
CDN Genomic  
Eval. 04-24  
Zoetis 04-24

# MAX



478 BPI

## 250HO16310 S-S-I REGAL MAX-ET A2A2

**REGAL X BIG AL X RESOLVE** TR TP TC TY TV TL TD TE HH1T HH2T HH3T HH4T HH5T HH6T

**HOLSTEIN** NASIS: 80FFUHD BETA CASEIN: A2A2 \$16 RRP

BPI: 478 OT: 97 MS: 99 MILKING SPEED: 101 TEMP: 100

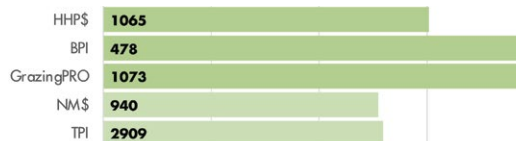
DAM: PLAIN-KNOLL BIG AL 2880 GP-82

2-00 3X 305D 11344 KGM 4.1% 460 KGF 3.3% 373 KGP

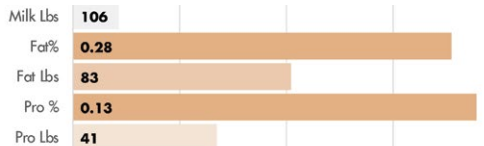
MGD: PLAIN-KNOLL RESOLVE 1893-ET EX-90

4-09 3X 293D 16284 KGM 4.1% 660 KGF 3.4% 553 KGP

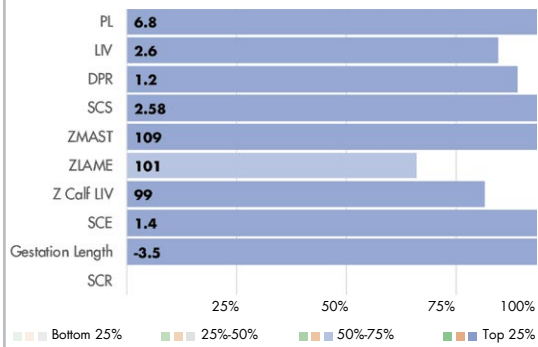
### INDEXES



### PRODUCTION



### HEALTH AND FERTILITY TRAITS



MGD: Plain-Knoll Resolve 1893-ET EX-90



Dam: Plain-Knoll Big Al 2880 GP-82

### PHYSICAL TRAIT EVALUATION

CDCB/HA Genetic Eval. 04-24  
0 dtrs. 0 herds  
80% Rel.

PTAT: 0.87 UDC: 1.40 FLC: 0.17 TPI: 2909

Trait	Value	Scale
Stature	Short	-0.18 Tall
Strength	Frail	-0.12 Strong
Body Depth	Shallow	-0.69 Deep
Dairy Form	Tight Ribbed	-0.41 Open Ribbed
Rump Width	Narrow	-0.45 Wide
Rump Angle	High Pins	0.03 Sloped
Rear Leg (side view)	Posty	-0.27 Sickled
Rear Leg (rear view)	Hock-in	0.20 Straight
Foot Angle	Low Angle	0.56 Steep Angle
Feet & Leg Score	Low	0.07 High
Fore Udder	Loose	2.07 Strong
Rear Udder Height	Low	1.59 High
Rear Udder Width	Narrow	1.11 Wide
Udder Cleft	Weak	0.09 Strong
Udder Depth	Deep	1.39 Shallow
Front Teat Placement	Wide	0.50 Close
Rear Teat Placement	Wide	0.42 Close
Teat Length	Short	-1.13 Long



USDA-CDCB  
Genomic Eval.  
04-24  
CDN Genomic  
Eval. 04-24  
Zoetis 04-24



# MCCLUNE



504 BPI

250HO16715 S-S-I OVERDO MCCLUNE-ET **A2A2**

**OVERDO X TOP DOG X RENEGADE** TR TP TM TC TY TV TL TD MW HH1T HH2T HH3T HH4T HH5T HH6T

**HOLSTEIN** NASIS: 80FFVR8 BETA CASEIN: A2A2 \$45 RRP \$85 SEXED

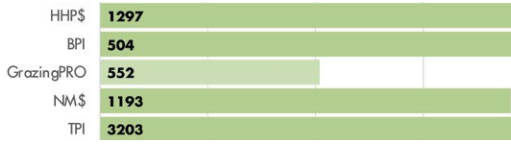
BPI: 504 OT: 99 MS: 106 MILKING SPEED: 100 TEMP: 102

DAM: S-S-I TOP DOG 10204 2024-ET

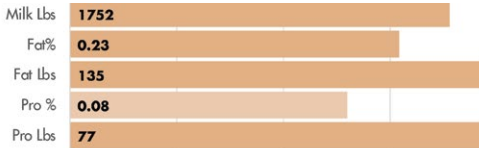
MGD: S-S-I RENEGAD 8238 10204-ET EX-90

3-04 3X 365D 24834 KGM 5.0% 1237 KGF 3.1% 773 KGP

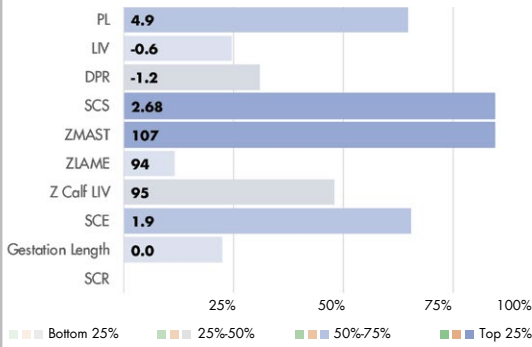
## INDEXES



## PRODUCTION



## HEALTH AND FERTILITY TRAITS



MGD: S-S-I Renegad 8238 10204-ET EX-90

## PHYSICAL TRAIT EVALUATION

CDCB/HA Genetic Eval. 04-24

0 dtrs. 0 herds  
78% Rel.

PTAT: 1.42 UDC: 1.64 FLC: -0.17 TPI: 3203

Stature	Short	1.14	Tall
Strength	Frail	0.45	Strong
Body Depth	Shallow	0.63	Deep
Dairy Form	Tight Ribbed	2.08	Open Ribbed
Rump Width	Narrow	1.57	Wide
Rump Angle	High Pins	1.85	Sloped
Rear Leg (side view)	Posty	0.06	Sickled
Rear Leg (rear view)	Hock-in	0.07	Straight
Foot Angle	Low Angle	0.73	Steep Angle
Feet & Leg Score	Low	0.04	High
Fore Udder	Loose	1.53	Strong
Rear Udder Height	Low	2.22	High
Rear Udder Width	Narrow	3.00	Wide
Udder Cleft	Weak	1.38	Strong
Udder Depth	Deep	0.61	Shallow
Front Teat Placement	Wide	1.89	Close
Rear Teat Placement	Wide	2.06	Close
Teat Length	Short	-0.55	Long



USDA-CDCB  
Genomic Eval.  
04-24  
CDN Genomic  
Eval. 04-24  
Zoetis 04-24

# MCGRAW



509 BPI

14HO16091 SANDY-VALLEY MCGRAW-ET **A2A2**

**CONWAY X LEGACY X RESOLVE** TR TP TC TY TV TL TD TE HH1T HH2T HH3T HH4T HH5T HH6T

**HOLSTEIN** NASIS: 80FFUBC BETA CASEIN: A2A2 \$22 RRP \$50 SEXED

BPI: 509 OT: 95 MS: 97 MILKING SPEED: 100 TEMP: 101

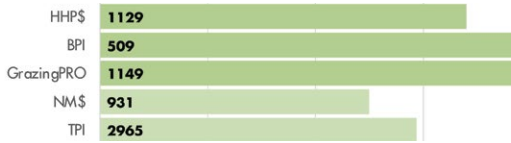
DAM: SANDY-VALLEY LEGCY PILET GP-80

3-09 3X 300D 12773 KGM 5.5% 705 KGF 4.0% 515 KGP

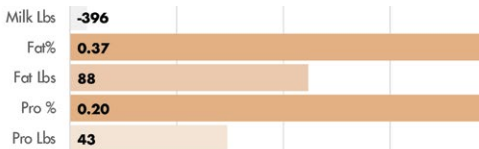
MGD: SANDY-VALLEY RSLV PUZZLE-ET EX-90

3-01 3X 365D 13562 KGM 5.0% 673 KGF 3.7% 507 KGP

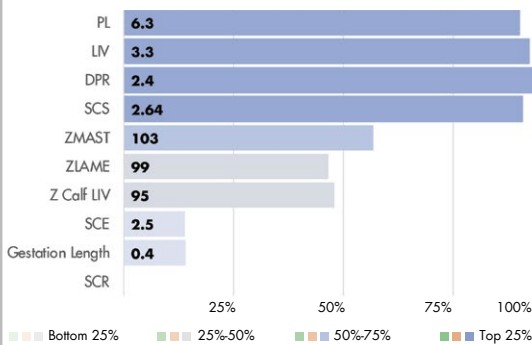
## INDEXES



## PRODUCTION



## HEALTH AND FERTILITY TRAITS



5th dam: Pine-Tree Monica Planeta-ET VG-86



MGD: Sandy-Valley Md Pleasure-ET EX-91

## PHYSICAL TRAIT EVALUATION

CDCB/HA Genetic Eval. 04-24

0 dtrs. 0 herds  
82% Rel.

PTAT: 1.11 UDC: 1.24 FLC: 0.64 TPI: 2965

Stature	Short	0.95	Tall
Strength	Frail	0.38	Strong
Body Depth	Shallow	0.14	Deep
Dairy Form	Tight Ribbed	0.04	Open Ribbed
Rump Width	Narrow	0.15	Wide
Rump Angle	High Pins	0.46	Sloped
Rear Leg (side view)	Posty	0.24	Sickled
Rear Leg (rear view)	Hock-in	1.05	Straight
Foot Angle	Low Angle	0.90	Steep Angle
Feet & Leg Score	Low	0.72	High
Fore Udder	Loose	2.33	Strong
Rear Udder Height	Low	1.37	High
Rear Udder Width	Narrow	1.00	Wide
Udder Cleft	Weak	0.27	Strong
Udder Depth	Deep	1.84	Shallow
Front Teat Placement	Wide	0.65	Close
Rear Teat Placement	Wide	0.32	Close
Teat Length	Short	-0.87	Long



USDA-CDCB  
Genomic Eval.  
04-24  
CDN Genomic  
Eval. 04-24  
Zoetis 04-24

# MELLENCAMP



457 BPI

7HO15204 FLY-HIGHER MELLENCAMP-ET **A2A2**

**RENEGADE X SAMURI X SUPERSHOT** TR TP TM TC TY TV TL TD TE HH1T HH2T HH3T HH4T HH5T HH6T

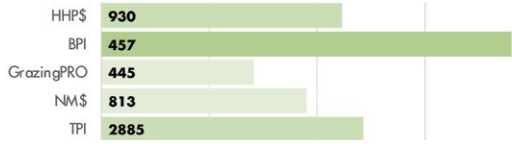
**HOLSTEIN** NASIS: 80FFSBE BETA CASEIN: A2A2 NA RRP \$50 SEXED

BPI: 457 OT: 103 MS: 103 MILKING SPEED: 100 TEMP: 100

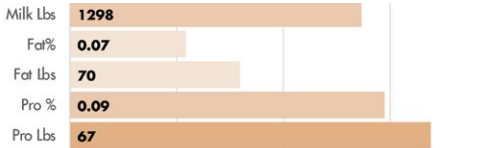
DAM: FLY-HIGHER SAMURI MEDRIA-ET GP-82  
2-04 3X 337D 14538 KGM 4.1% 591 KGF 3.3% 481 KGP

MGD: FLY-HIGHER SHOT MISTRESS-ET EX-90  
4-06 3X 272D 16125 KGM 4.0% 640 KGF 3.1% 495 KGP

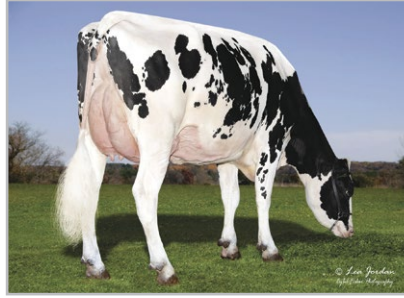
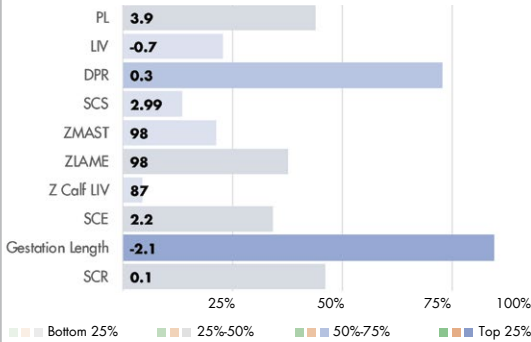
## INDEXES



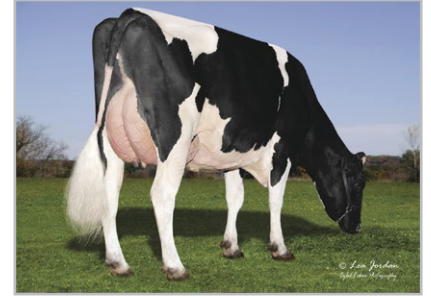
## PRODUCTION



## HEALTH AND FERTILITY TRAITS



Highbanks Mellencamp 50582



Highbanks Mellencamp 52411

## PHYSICAL TRAIT EVALUATION

CDCB/HA Genetic Eval. 04-24  
190 dtrs. 56 herds  
93% Rel.

PTAT: 1.71 UDC: 1.38 FLC: 0.99 TPI: 2885

Stature	Short	1.03	Tall
Strength	Frail	0.61	Strong
Body Depth	Shallow	0.57	Deep
Dairy Form	Tight Ribbed	1.11	Open Ribbed
Rump Width	Narrow	0.71	Wide
Rump Angle	High Pins	1.22	Sloped
Rear Leg (side view)	Posty	1.20	Sickled
Rear Leg (rear view)	Hock-in	1.55	Straight
Foot Angle	Low Angle	0.53	Steep Angle
Feet & Leg Score	Low	1.10	High
Fore Udder	Loose	2.01	Strong
Rear Udder Height	Low	1.41	High
Rear Udder Width	Narrow	1.30	Wide
Udder Cleft	Weak	1.05	Strong
Udder Depth	Deep	1.63	Shallow
Front Teat Placement	Wide	1.31	Close
Rear Teat Placement	Wide	1.50	Close
Teat Length	Short	-0.12	Long



IB/MACE-G 04-24  
CDN Genomic  
Eval. 04-24  
Zoetis 04-24

# MUFASA



442 BPI

14HO15812 WET LEGACY MUFASA-ET **A2A2**

**LEGACY X ACHIEVER X FLAGSHIP** TR TP TC TY TV TL TD TE HH1T HH2T HH3T HH4T HH5T HH6T

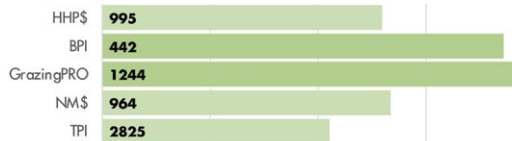
**HOLSTEIN** NASIS: 80FFTNO BETA CASEIN: A2A2 \$25 RRP \$55 SEXED

BPI: 442 OT: 97 MS: 99 MILKING SPEED: 101 TEMP: 99

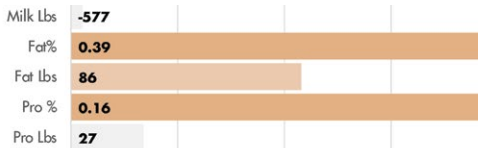
DAM: WET ACHIEVER MIMOSA-ET GP-80  
2-06 2X 365D 9702 KGM 5.8% 561 KGF 4.1% 395 KGP

MGD: WET FLAGSHIP MOSSIE-ET VG-88  
4-08 2X 365D 17645 KGM 4.3% 758 KGF 3.4% 602 KGP

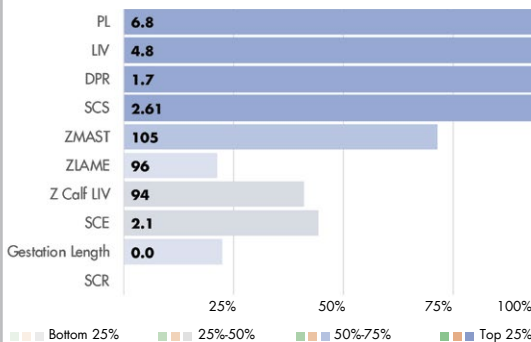
## INDEXES



## PRODUCTION



## HEALTH AND FERTILITY TRAITS



MGGD: Ms Delicious Mojo-ET EX-90

## PHYSICAL TRAIT EVALUATION

CDCB/HA Genetic Eval. 04-24  
0 dtrs. 0 herds  
81% Rel.

PTAT: -0.14 UDC: 1.39 FLC: -0.63 TPI: 2825

Stature	Short	-1.44	Tall
Strength	Frail	-1.32	Strong
Body Depth	Shallow	-1.88	Deep
Dairy Form	Tight Ribbed	-0.97	Open Ribbed
Rump Width	Narrow	-0.65	Wide
Rump Angle	High Pins	-0.51	Sloped
Rear Leg (side view)	Posty	-1.40	Sickled
Rear Leg (rear view)	Hock-in	-0.75	Straight
Foot Angle	Low Angle	-0.54	Steep Angle
Feet & Leg Score	Low	-0.89	High
Fore Udder	Loose	1.70	Strong
Rear Udder Height	Low	1.25	High
Rear Udder Width	Narrow	0.81	Wide
Udder Cleft	Weak	-0.08	Strong
Udder Depth	Deep	1.19	Shallow
Front Teat Placement	Wide	0.09	Close
Rear Teat Placement	Wide	-0.06	Close
Teat Length	Short	-0.64	Long



USDA-CDCB  
Genomic Eval.  
04-24  
CDN Genomic  
Eval. 04-24  
Zoetis 04-24



# MUSCLES



HOLSTEIN

250HO15235 **OCD FORTE MUSCLES-ET A2A2**

**FORTE X BURLEY X DELTA** TR TP TC TY TV TL TD TE HH1T HH2T HH3T HH4T HH5T HH6T

**HOLSTEIN** NASIS: 8OFFSJF BETA CASEIN: A2A2 \$12 RRP

BPI: 326 OT: 96 MS: 98 MILKING SPEED: 103 TEMP: 100

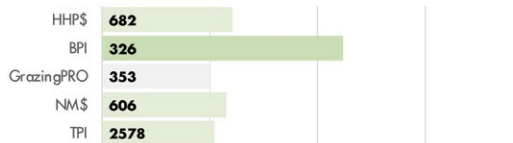
DAM: OCD BURLEY MENNA 41515-ET VG-86

2-02 3X 345D 14946 KGM 4.5% 677 KGF 3.4% 506 KGP

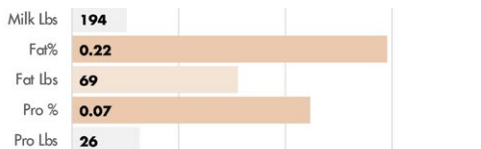
MGD: OCD DELTA MENNA 34187-ET VG-85

2-06 3X 365D 14011 KGM 3.7% 523 KGF 3.2% 454 KGP

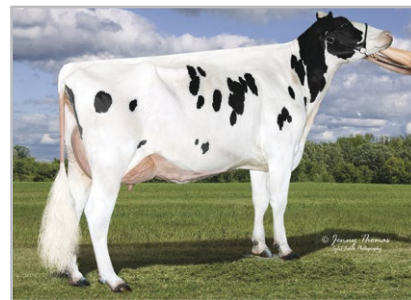
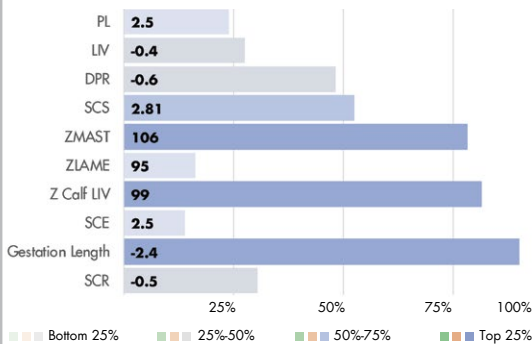
## INDEXES



## PRODUCTION



## HEALTH AND FERTILITY TRAITS



MGD: OCD Delta Menna 34187-ET VG-85

## PHYSICAL TRAIT EVALUATION

CDCB/HA Genetic Eval. 04-24  
170 dtrs. 39 herds  
95% Rel.

PTAT: 1.10 UDC: 1.26 FLC: 0.29 TPI: 2578

Stature	Short		1.28	Tall
Strength	Frail		-0.42	Strong
Body Depth	Shallow		0.07	Deep
Dairy Form	Tight Ribbed		1.22	Open Ribbed
Rump Width	Narrow		0.43	Wide
Rump Angle	High Pins		-0.44	Sloped
Rear Leg (side view)	Posty		0.45	Sickled
Rear Leg (rear view)	Hock-in		0.26	Straight
Foot Angle	Low Angle		1.17	Steep Angle
Feet & Leg Score	Low		0.58	High
Fore Udder	Loose		1.66	Strong
Rear Udder Height	Low		2.02	High
Rear Udder Width	Narrow		0.65	Wide
Udder Cleft	Weak		1.02	Strong
Udder Depth	Deep		2.09	Shallow
Front Teat Placement	Wide		0.32	Close
Rear Teat Placement	Wide		0.57	Close
Teat Length	Short		-0.91	Long



USDA-CDCB  
Genomic Eval.  
04-24  
CDN Genomic  
Eval. 04-24  
Zoetis 04-24

# POROTO



508 BPI

7HO16894 **S-S-I SIEMERS OD POROTO-ET A2A2**

**OVERDO X PERFECT X RIVETING** TR TP TM TC TY TV TL TD TE HH1T HH2T HH3T HH4T HH5T HH6T

**HOLSTEIN** NASIS: 8OFFVM1 BETA CASEIN: A2A2 \$32 RRP \$80 SEXED

BPI: 508 OT: 104 MS: 108 MILKING SPEED: 101 TEMP: 103

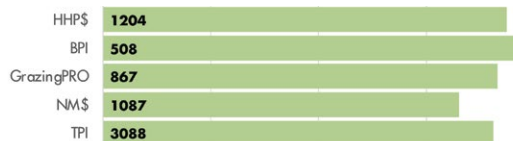
DAM: BADGER S-S-I VF 60564-ET GP-80

1-11 3X 308D 12406 KGM 4.5% 564 KGF 3.2% 396 KGP

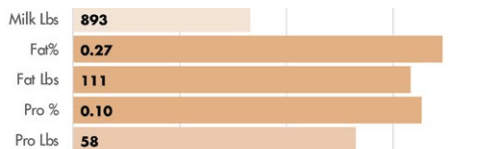
MGD: HORSENS S-S-I 3192 16215-ET

3-04 3X 303D 14057 KGM 4.3% 610 KGF 3.0% 424 KGP

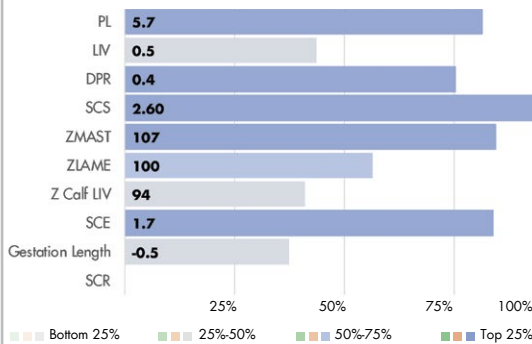
## INDEXES



## PRODUCTION



## HEALTH AND FERTILITY TRAITS



Family member: AOT Perfect Honna-ET VG-87



MGGD: Badger SSI Out 7423 3192-ET VG-88

## PHYSICAL TRAIT EVALUATION

CDCB/HA Genetic Eval. 04-24  
0 dtrs. 0 herds  
78% Rel.

PTAT: 0.98 UDC: 2.01 FLC: 0.30 TPI: 3088

Stature	Short		-0.06	Tall
Strength	Frail		-0.07	Strong
Body Depth	Shallow		-0.25	Deep
Dairy Form	Tight Ribbed		0.74	Open Ribbed
Rump Width	Narrow		0.95	Wide
Rump Angle	High Pins		0.80	Sloped
Rear Leg (side view)	Posty		-0.16	Sickled
Rear Leg (rear view)	Hock-in		0.51	Straight
Foot Angle	Low Angle		0.44	Steep Angle
Feet & Leg Score	Low		0.18	High
Fore Udder	Loose		2.02	Strong
Rear Udder Height	Low		2.37	High
Rear Udder Width	Narrow		2.53	Wide
Udder Cleft	Weak		1.05	Strong
Udder Depth	Deep		1.15	Shallow
Front Teat Placement	Wide		1.05	Close
Rear Teat Placement	Wide		1.23	Close
Teat Length	Short		-0.57	Long



USDA-CDCB  
Genomic Eval.  
04-24  
CDN Genomic  
Eval. 04-24  
Zoetis 04-24

# PYLER



377 BPI

7HO16119 SIEMERS ASTD PYLER 34943-ET **A2A2**

**AUSTAD X LEGACY X DELTA-LAMBDA** TP TR TC TY TV TL TD TE HH1T HH2T HH3T HH4T HH5T HH6T

**HOLSTEIN** NASIS: 80FFUCM BETA CASEIN: A2A2 \$36 RRP \$70 SEXED

BPI: 377 OT: 108 MS: 107 MILKING SPEED: 99 TEMP: 101

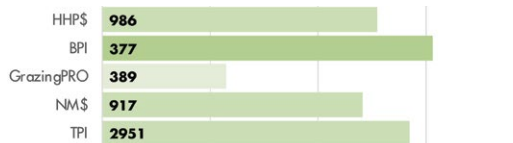
DAM: SIEMERS LGCY PARIS 31379-ET VG-85

3-02 3X 303D 12764 KGM 4.6% 585 KGF 3.5% 452 KGP

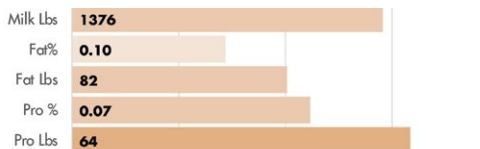
MGD: SIEMERS LMDA PARIS 27856-ET EX-91

3-05 2X 365D 17500 KGM 4.1% 716 KGF 3.5% 618 KGP

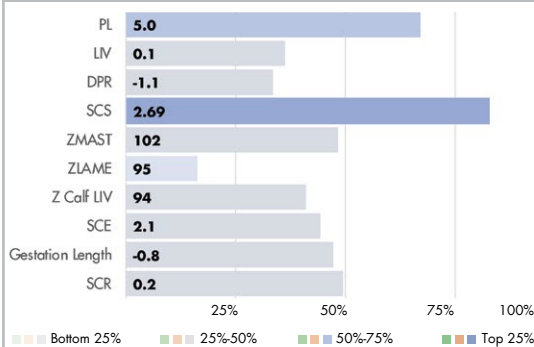
## INDEXES



## PRODUCTION



## HEALTH AND FERTILITY TRAITS



MGD: Siemers Lmda Paris 27856-ET EX-91



Dam: Siemers Lgcy Paris 31379-ET VG-85

## PHYSICAL TRAIT EVALUATION

CDCB/HA Genetic Eval. 04-24  
0 dtrs. 0 herds  
81% Rel.

PTAT: 2.03 UDC: 1.69 FLC: 0.69 TPI: 2951

Stature	Short	1.18	Tall
Strength	Frail	0.64	Strong
Body Depth	Shallow	0.90	Deep
Dairy Form	Tight Ribbed	2.07	Open Ribbed
Rump Width	Narrow	1.67	Wide
Rump Angle	High Pins	0.94	Sloped
Rear Leg (side view)	Posty	0.26	Sickled
Rear Leg (rear view)	Hock-in	0.76	Straight
Foot Angle	Low Angle	1.04	Steep Angle
Feet & Leg Score	Low	0.92	High
Fore Udder	Loose	2.10	Strong
Rear Udder Height	Low	2.31	High
Rear Udder Width	Narrow	2.99	Wide
Udder Cleft	Weak	0.49	Strong
Udder Depth	Deep	0.85	Shallow
Front Teat Placement	Wide	0.73	Close
Rear Teat Placement	Wide	0.51	Close
Teat Length	Short	0.20	Long



USDA-CDCB  
Genomic Eval.  
04-24  
CDN Genomic  
Eval. 04-24  
Zoetis 04-24

# RAGER-RED



7HO12344 RI-VAL-RE RAGER-RED-ET **A2A2**

**RELIEF P X OBSERVER X ADVENT-RED** TP TM TC TY TV TL TD TE HH1T HH2T HH3T HH4T HH5T HH6T

**HOLSTEIN** NASIS: 80FFKC5 BETA CASEIN: A2A2 \$28 RRP \$65 SEXED

BPI: 131 OT: 106 MS: 101 MILKING SPEED: 97 TEMP: 98

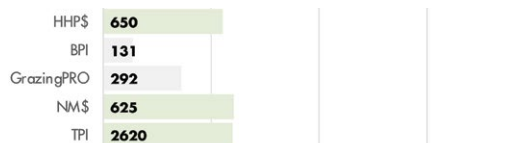
DAM: RI-VAL-RE OBSVR SALSA-ET VG-88

4-05 2X 297D 13173 KGM 5.3% 700 KGF 3.1% 414 KGP

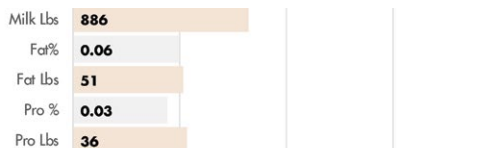
MGD: RI-VAL-RE ADV WIN-GO-RED-ET EX-90

4-00 2X 305D 13490 KGM 4.0% 543 KGF 3.1% 412 KGP

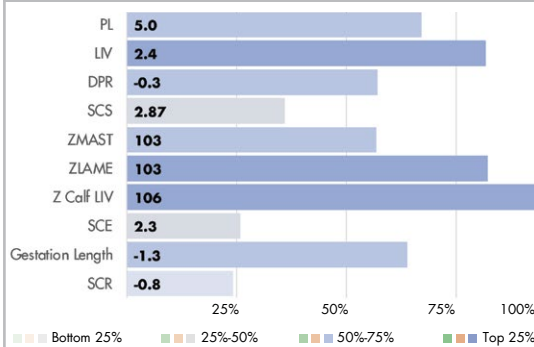
## INDEXES



## PRODUCTION



## HEALTH AND FERTILITY TRAITS



Groves-Vu Rager Tabbeey-Red EX-91

## PHYSICAL TRAIT EVALUATION

CDCB/HA Genetic Eval. 04-24  
11076 dtrs. 3577 herds  
99% Rel.

PTAT: 1.71 UDC: 0.73 FLC: 1.33 TPI: 2620

Stature	Short	1.00	Tall
Strength	Frail	1.38	Strong
Body Depth	Shallow	1.69	Deep
Dairy Form	Tight Ribbed	1.31	Open Ribbed
Rump Width	Narrow	1.07	Wide
Rump Angle	High Pins	0.95	Sloped
Rear Leg (side view)	Posty	1.28	Sickled
Rear Leg (rear view)	Hock-in	1.20	Straight
Foot Angle	Low Angle	1.21	Steep Angle
Feet & Leg Score	Low	1.57	High
Fore Udder	Loose	1.21	Strong
Rear Udder Height	Low	0.83	High
Rear Udder Width	Narrow	0.96	Wide
Udder Cleft	Weak	1.65	Strong
Udder Depth	Deep	0.42	Shallow
Front Teat Placement	Wide	1.02	Close
Rear Teat Placement	Wide	2.24	Close
Teat Length	Short	-0.61	Long



IB/MACE-G 04-24  
CDN Genomic  
Eval. 04-24  
Zoetis 04-24



# REEVE-RED



HOLSTEIN

614HO14464 MR STONE-FRONT REEVE-RED-ET

**SALVATORE RC X SILVER X NUMERO UNO** TP TC TY TV TL TD TE HH1T HH2T HH3T HH4T HH5T HH6T

**HOLSTEIN NASIS: 80FFPEZ BETA CASEIN: A1A2 \$20 RRP \$45 SEXED**

**BPI: 269 OT: 102 MS: 102 MILKING SPEED: 100 TEMP: 101**

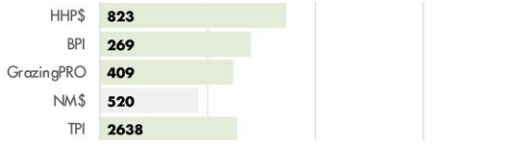
DAM: Y-WHISPER SILVER REGALET VG-87

2-03 3X 365D 17232 KGM 3.3% 567 KGF 3.1% 527 KGP

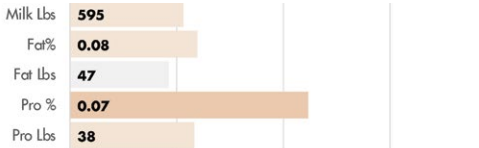
MGD: MORNINGVIEW UNO REGINA-ET EX-91

8-00 2X 308D 15141 KGM 4.6% 702 KGF 3.2% 488 KGP

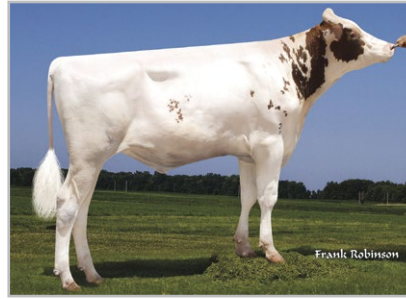
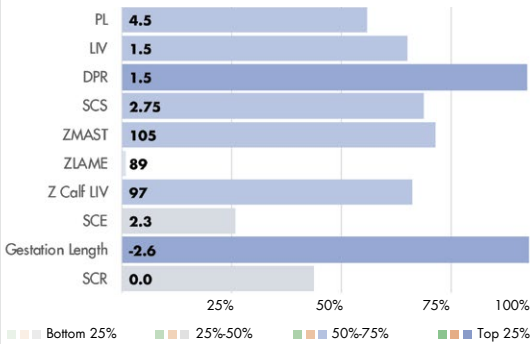
## INDEXES



## PRODUCTION



## HEALTH AND FERTILITY TRAITS



Car-Mer Reevered Bixy-Red

## PHYSICAL TRAIT EVALUATION

PTAT: 1.37 UDC: 0.90 FLC: -0.11 TPI: 2638

CDCB/HA Genetic Eval. 04-24  
1806 dtrs. 682 herds  
99% Rel.

Stature	Short	2.97	Tall
Strength	Frail	1.87	Strong
Body Depth	Shallow	1.10	Deep
Dairy Form	Tight Ribbed	-0.80	Open Ribbed
Rump Width	Narrow	0.53	Wide
Rump Angle	High Pins	0.22	Sloped
Rear Leg (side view)	Posty	-1.50	Sickled
Rear Leg (rear view)	Hock-in	1.01	Straight
Foot Angle	Low Angle	2.47	Steep Angle
Feet & Leg Score	Low	0.31	High
Fore Udder	Loose	2.09	Strong
Rear Udder Height	Low	1.38	High
Rear Udder Width	Narrow	0.91	Wide
Udder Cleft	Weak	0.60	Strong
Udder Depth	Deep	2.00	Shallow
Front Teat Placement	Wide	1.66	Close
Rear Teat Placement	Wide	1.14	Close
Teat Length	Short	-0.28	Long



IB/MACE-G 04-24  
CDN Genomic  
Eval. 04-24  
Zoetis 04-24

# REMEDY



250HO15040 W-R-L SSI RENEGAD REMEDY-ET

**RENEGADE X SLAMDUNK X DELTA** TR TP TC TY TV TL TD TE HH1T HH2T HH3T HH4T HH5T HH6T

**HOLSTEIN NASIS: 80FFSMK BETA CASEIN: A1A1 \$20 RRP \$75 SEXED**

**BPI: 366 OT: 103 MS: 100 MILKING SPEED: 101 TEMP: 100**

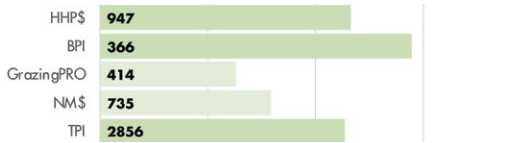
DAM: W-R-L SLAMDUNK N 8836-ET EX-90

3-04 3X 365D 18180 KGM 4.4% 807 KGF 3.3% 608 KGP

MGD: RI-VAL-RE DELTA 1536-ET EX-91

4-08 3X 365D 20543 KGM 4.0% 812 KGF 3.2% 661 KGP

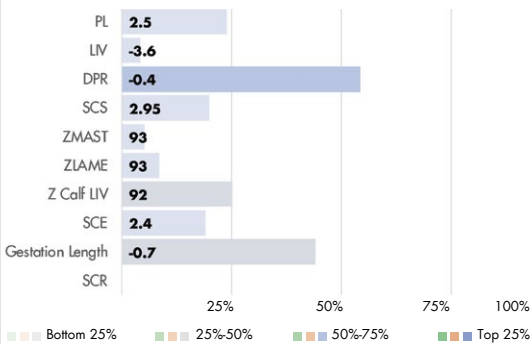
## INDEXES



## PRODUCTION



## HEALTH AND FERTILITY TRAITS



Jeanlu Remedy Tamira



Riter Remedy Andy

## PHYSICAL TRAIT EVALUATION

PTAT: 2.04 UDC: 2.00 FLC: 1.21 TPI: 2856

CDCB/HA Genetic Eval. 04-24  
77 dtrs. 41 herds  
86% Rel.

Stature	Short	0.99	Tall
Strength	Frail	0.91	Strong
Body Depth	Shallow	0.44	Deep
Dairy Form	Tight Ribbed	0.42	Open Ribbed
Rump Width	Narrow	0.73	Wide
Rump Angle	High Pins	-0.24	Sloped
Rear Leg (side view)	Posty	0.65	Sickled
Rear Leg (rear view)	Hock-in	1.88	Straight
Foot Angle	Low Angle	1.29	Steep Angle
Feet & Leg Score	Low	1.20	High
Fore Udder	Loose	2.82	Strong
Rear Udder Height	Low	2.15	High
Rear Udder Width	Narrow	1.95	Wide
Udder Cleft	Weak	0.83	Strong
Udder Depth	Deep	2.37	Shallow
Front Teat Placement	Wide	0.96	Close
Rear Teat Placement	Wide	0.95	Close
Teat Length	Short	0.35	Long



IB/MACE-G 04-24  
CDN Genomic  
Eval. 04-24  
Zoetis 04-24

# REWARD-RED



389 BPI

7HO16303 TRENT-WAY REWARD-RED-ET

**TROJAN\*RC X SIMPLICITY-P\*RC X DUKE** TP TC TY TV TL TD TE HH5C HH1T HH2T HH3T HH4T HH6T

**HOLSTEIN** NASIS: 80FFUJA BETA CASEIN: A1A2 \$34 RRP \$65 SEXED

BPI: 389 OT: 101 MS: 103 MILKING SPEED: 101 TEMP: 102

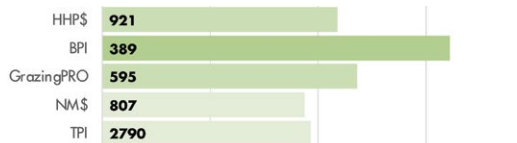
DAM: TRENT-WAY-JS REDZONE-RED-ET EX-91

4-00 2X 365D 17273 KGM 4.3% 749 KGF 3.1% 539 KGP

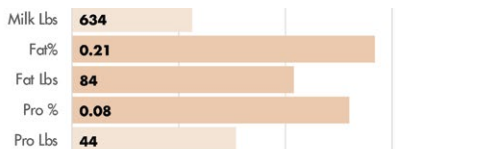
MGD: TRENT-WAY-JS RONA-ET EX-91

5-03 2X 365D 21836 KGM 3.9% 856 KGF 3.1% 685 KGP

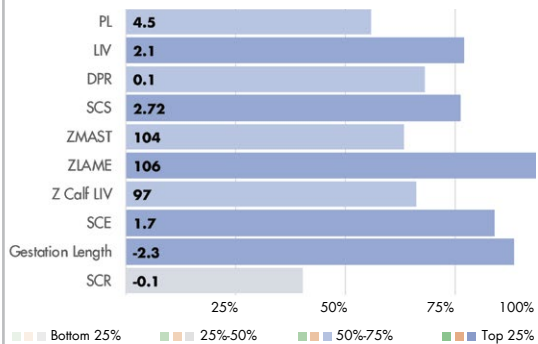
## INDEXES



## PRODUCTION



## HEALTH AND FERTILITY TRAITS



Dam: Trent-WayJS Redzone-Red-ET EX-91

## PHYSICAL TRAIT EVALUATION

CDCB/HA Genetic Eval. 04-24  
0 dtrs. 0 herds  
81% Rel.

PTAT: 1.12 UDC: 1.22 FLC: -0.36 TPI: 2790

Stature	Short	0.76	Tall
Strength	Frail	0.40	Strong
Body Depth	Shallow	0.38	Deep
Dairy Form	Tight Ribbed	0.53	Open Ribbed
Rump Width	Narrow	0.17	Wide
Rump Angle	High Pins	-0.62	Sloped
Rear Leg (side view)	Posty	1.27	Sickled
Rear Leg (rear view)	Hock-in	-0.69	Straight
Foot Angle	Low Angle	0.46	Steep Angle
Feet & Leg Score	Low	-0.02	High
Fore Udder	Loose	2.04	Strong
Rear Udder Height	Low	1.23	High
Rear Udder Width	Narrow	1.03	Wide
Udder Cleft	Weak	0.37	Strong
Udder Depth	Deep	1.71	Shallow
Front Teat Placement	Wide	0.31	Close
Rear Teat Placement	Wide	0.35	Close
Teat Length	Short	0.08	Long



USDA-CDCB  
Genomic Eval.  
04-24  
CDN Genomic  
Eval. 04-24  
Zoetis 04-24

# RIVERBEND-PP



250HO14809 WINSTAR RIVERBEND-PP-ET **A2A2**

**BHIT P X POWERBALL-P X NUMERO UNO** TR PP TC TY TV TL TD TE HH1T HH2T HH3T HH4T HH5T HH6T

**HOLSTEIN** NASIS: 80FFRDH BETA CASEIN: A2A2 \$18 RRP \$40 SEXED

BPI: 318 OT: 101 MS: 101 MILKING SPEED: 102 TEMP: 102

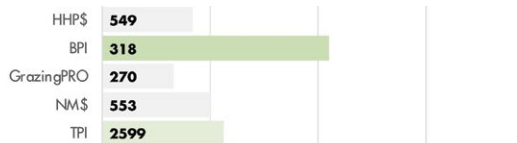
DAM: SEAGULL-BAY ROXY PP-ET GP-83

2-06 3X 305D 11258 KGM 4.1% 466 KGF 3.6% 408 KGP

MGD: MD-VALLEYVUE NUNO KIM-ET EX-91

9-05 3X 365D 16484 KGM 4.4% 732 KGF 3.5% 577 KGP

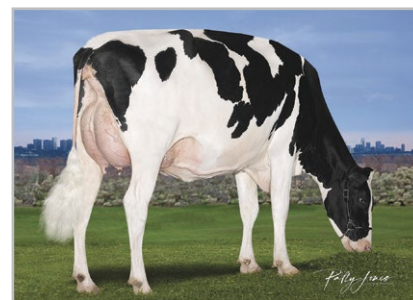
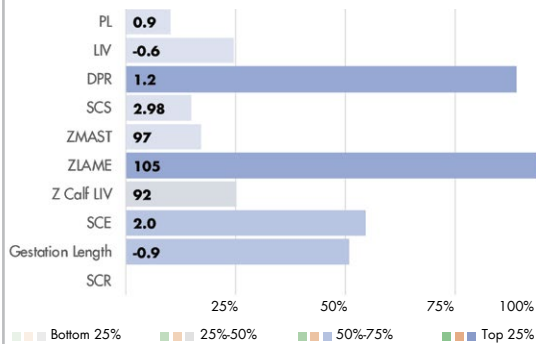
## INDEXES



## PRODUCTION



## HEALTH AND FERTILITY TRAITS



MGD: Md-Valleyvue Nuno Kim-ET EX-91

Hulsdale RB Snapon P GP-84

## PHYSICAL TRAIT EVALUATION

CDCB/HA Genetic Eval. 04-24  
236 dtrs. 112 herds  
85% Rel.

PTAT: 1.14 UDC: 1.39 FLC: -0.50 TPI: 2599

Stature	Short	0.63	Tall
Strength	Frail	0.80	Strong
Body Depth	Shallow	0.64	Deep
Dairy Form	Tight Ribbed	0.91	Open Ribbed
Rump Width	Narrow	-0.13	Wide
Rump Angle	High Pins	-0.53	Sloped
Rear Leg (side view)	Posty	0.46	Sickled
Rear Leg (rear view)	Hock-in	-1.17	Straight
Foot Angle	Low Angle	1.02	Steep Angle
Feet & Leg Score	Low	-0.17	High
Fore Udder	Loose	2.16	Strong
Rear Udder Height	Low	2.21	High
Rear Udder Width	Narrow	1.62	Wide
Udder Cleft	Weak	-0.11	Strong
Udder Depth	Deep	1.39	Shallow
Front Teat Placement	Wide	-0.35	Close
Rear Teat Placement	Wide	-1.23	Close
Teat Length	Short	0.54	Long



USDA-CDCB  
Genomic Eval.  
04-24  
CDN Genomic  
Eval. 04-24  
Zoetis 04-24



# RONALD\* RC



447 BPI

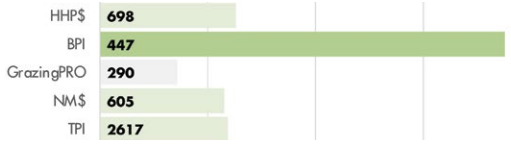
250HO14465 TRENT-WAY-JS RONALD-ET

**SALVATORE RC X SILVER X NUMERO UNO** RC TP TC TY TV TL TD TE HH1T HH2T HH3T HH4T HH5T HH6T

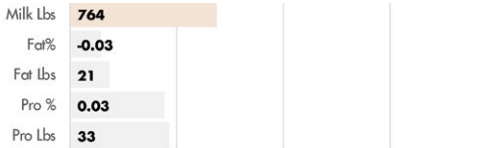
**HOLSTEIN** NASIS: 80FFPFE BETA CASEIN: A1A1 \$22 RRP  
BPI: 447 OT: 104 MS: 105 MILKING SPEED: 103 TEMP: 102

DAM: Y-WHISPER SILVER ROYALTY-ET EX-94  
6-07 2X 365D 15164 KGM 4.7% 711 KGF 3.3% 495 KGP  
MGD: MORNINGVIEW UNO REGINA-ET EX-91  
8-00 2X 308D 15141 KGM 4.6% 702 KGF 3.2% 488 KGP

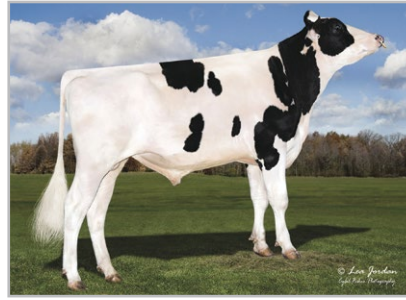
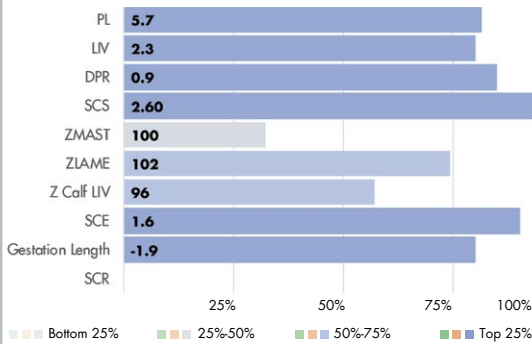
## INDEXES



## PRODUCTION



## HEALTH AND FERTILITY TRAITS



Jeffrey-Way Spunky-Red-ET VG-88

## PHYSICAL TRAIT EVALUATION

CDCB/HA Genetic Eval. 04-24  
3589 dtrs. 1313 herds  
97% Rel.

PTAT: 1.54 UDC: 1.70 FLC: 1.28 TPI: 2617

Stature	Short		1.52	Tall
Strength	Frail		-0.44	Strong
Body Depth	Shallow		-0.22	Deep
Dairy Form	Tight Ribbed		0.89	Open Ribbed
Rump Width	Narrow		0.05	Wide
Rump Angle	High Pins		0.57	Sloped
Rear Leg (side view)	Posty		-1.00	Sickled
Rear Leg (rear view)	Hock-in		1.93	Straight
Foot Angle	Low Angle		2.07	Steep Angle
Feet & Leg Score	Low		1.38	High
Fore Udder	Loose		2.10	Strong
Rear Udder Height	Low		2.96	High
Rear Udder Width	Narrow		1.04	Wide
Udder Cleft	Weak		0.03	Strong
Udder Depth	Deep		2.64	Shallow
Front Teat Placement	Wide		1.45	Close
Rear Teat Placement	Wide		0.39	Close
Teat Length	Short		-0.90	Long



IB/MACE-G 04-24  
CDN Genomic  
Eval. 04-24  
Zoetis 04-24

# SEBASTIAN



432 BPI

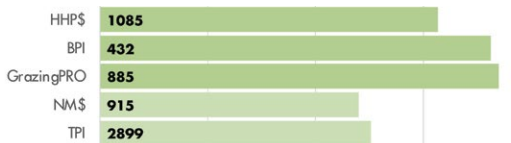
7HO15990 OCD CONWAY SEBASTIAN-ET **A2A2**

**CONWAY X LEGACY X RESOLVE** TR TP TM TC TY TV TL TD TE HH1T HH2T HH3T HH4T HH5T HH6T

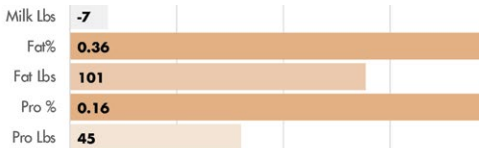
**HOLSTEIN** NASIS: 80FFUAS BETA CASEIN: A2A2 \$25 RRP \$60 SEXED  
BPI: 432 OT: 97 MS: 100 MILKING SPEED: 99 TEMP: 101

DAM: OCD LEGACY SOY 52732-ET VG-88  
3-06 3X 365D 20675 KGM 4.1% 843 KGF 3.4% 708 KGP  
MGD: OCD RESOLVE SOY 44699-ET VG-86  
5-05 3X 305D 15195 KGM 4.2% 638 KGF 3.4% 512 KGP

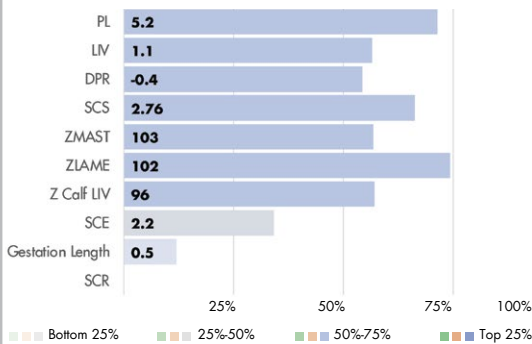
## INDEXES



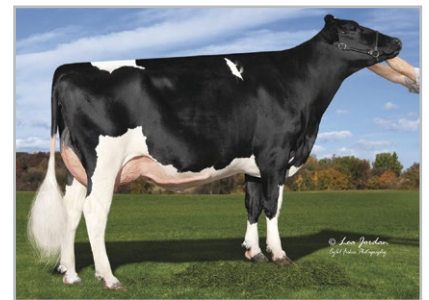
## PRODUCTION



## HEALTH AND FERTILITY TRAITS



Paternal sister: OCD Conway Soy 55723



Legacy dr: Kings-Ransom Lgcy Dakota-ET VG-85

## PHYSICAL TRAIT EVALUATION

CDCB/HA Genetic Eval. 04-24  
0 dtrs. 0 herds  
82% Rel.

PTAT: 1.16 UDC: 1.10 FLC: 0.74 TPI: 2899

Stature	Short		0.79	Tall
Strength	Frail		0.40	Strong
Body Depth	Shallow		0.14	Deep
Dairy Form	Tight Ribbed		0.16	Open Ribbed
Rump Width	Narrow		-0.09	Wide
Rump Angle	High Pins		-0.64	Sloped
Rear Leg (side view)	Posty		-0.21	Sickled
Rear Leg (rear view)	Hock-in		1.24	Straight
Foot Angle	Low Angle		0.93	Steep Angle
Feet & Leg Score	Low		0.74	High
Fore Udder	Loose		2.10	Strong
Rear Udder Height	Low		1.21	High
Rear Udder Width	Narrow		0.88	Wide
Udder Cleft	Weak		0.22	Strong
Udder Depth	Deep		1.68	Shallow
Front Teat Placement	Wide		0.18	Close
Rear Teat Placement	Wide		-0.24	Close
Teat Length	Short		-0.42	Long



USDA-CDCB  
Genomic Eval.  
04-24  
CDN Genomic  
Eval. 04-24  
Zoetis 04-24

# TATOO

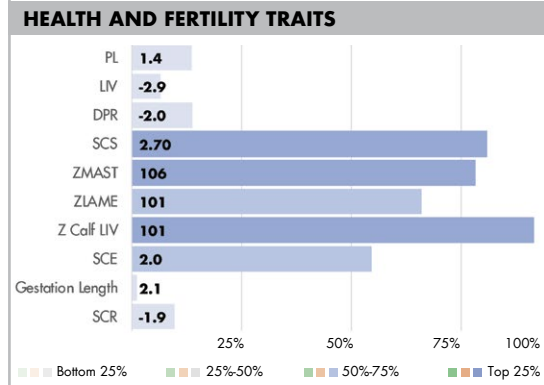
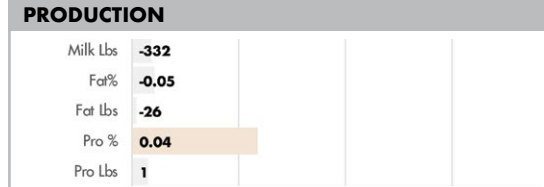


7HO13839 DUCKETT CRUSH TATOO-ET

**CRUSH X GOLD CHIP X DURHAM** TR TP TC TY TV TL TD TE HH1T HH2T HH3T HH4T HH5T HH6T

**HOLSTEIN** NASIS: 80FFNCU BETA CASEIN: A1A2 \$30 RRP  
BPI: 225 OT: 106 MS: 107 MILKING SPEED: 105 TEMP: 102

DAM: DUCKETT G CHIP TOKYO-ET EX-93  
3-09 2X 365D 14937 KGM 3.9% 579 KGF 3.3% 488 KGP  
MGD: VANGOH DURHAM TREASURE EX-96  
9-04 2X 365D 18507 KGM 3.9% 719 KGF 3.1% 568 KGP



Esperanza-CC Thunderstruck EX-92

### PHYSICAL TRAIT EVALUATION

CDCB/HA Genetic Eval. 04-24  
4970 dtrs. 1832 herds  
99% Rel.

PTAT: 2.87 UDC: 2.23 FLC: 0.73 TPI: 2047

Stature	Short	2.17	Tall
Strength	Frail	0.25	Strong
Body Depth	Shallow	1.44	Deep
Dairy Form	Tight Ribbed	2.64	Open Ribbed
Rump Width	Narrow	3.93	Wide
Rump Angle	High Pins	0.99	Sloped
Rear Leg (side view)	Posty	3.16	Sickled
Rear Leg (rear view)	Hock-in	0.32	Straight
Foot Angle	Low Angle	1.27	Steep Angle
Feet & Leg Score	Low	1.57	High
Fore Udder	Loose	3.58	Strong
Rear Udder Height	Low	2.76	High
Rear Udder Width	Narrow	2.38	Wide
Udder Cleft	Weak	1.92	Strong
Udder Depth	Deep	2.63	Shallow
Front Teat Placement	Wide	1.31	Close
Rear Teat Placement	Wide	1.20	Close
Teat Length	Short	-1.38	Long



IB/MACE-G 04-24  
CDN Genomic  
Eval. 04-24  
Zoetis 04-24

# TAVARES

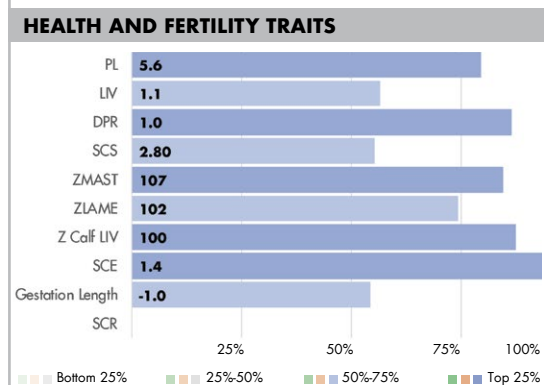
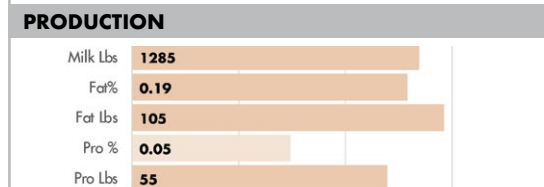
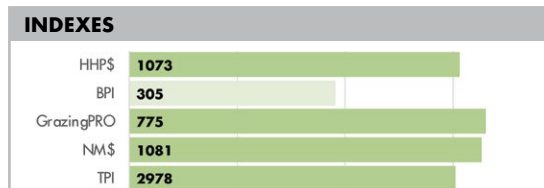


7HO16783 WELCOME TALCUM TAVARES-ET **A2A2**

**FROST BITE X ALPHABET X ROLAN** TR TP TM TC TY TL TD TE HH1T HH2T HH3T HH4T HH5T HH6T

**HOLSTEIN** NASIS: 80FFVN2 BETA CASEIN: A2A2 \$30 RRP \$70 SEXED  
BPI: 305 OT: 95 MS: 98 MILKING SPEED: 101 TEMP: 101

DAM: WELCOME ALPHABET TASH  
MGD: WELCOME ROLAN TISH-ET VG-86  
3-00 3X 322D 12927 KGM 4.4% 565 KGF 3.5% 449 KGP



MGD: Welcome Jedi Toto-ET VG-86

MGD: Welcome Rolan Tish-ET VG-86

### PHYSICAL TRAIT EVALUATION

CDCB/HA Genetic Eval. 04-24  
0 dtrs. 0 herds  
78% Rel.

PTAT: 0.36 UDC: 1.09 FLC: -0.06 TPI: 2978

Stature	Short	-0.77	Tall
Strength	Frail	-1.03	Strong
Body Depth	Shallow	-1.19	Deep
Dairy Form	Tight Ribbed	0.27	Open Ribbed
Rump Width	Narrow	-0.30	Wide
Rump Angle	High Pins	-0.69	Sloped
Rear Leg (side view)	Posty	-0.11	Sickled
Rear Leg (rear view)	Hock-in	-0.64	Straight
Foot Angle	Low Angle	0.21	Steep Angle
Feet & Leg Score	Low	-0.12	High
Fore Udder	Loose	0.96	Strong
Rear Udder Height	Low	1.43	High
Rear Udder Width	Narrow	1.10	Wide
Udder Cleft	Weak	0.14	Strong
Udder Depth	Deep	0.49	Shallow
Front Teat Placement	Wide	0.26	Close
Rear Teat Placement	Wide	0.46	Close
Teat Length	Short	-0.89	Long



USDA-CDCB  
Genomic Eval.  
04-24  
CDN Genomic  
Eval. 04-24  
Zoetis 04-24





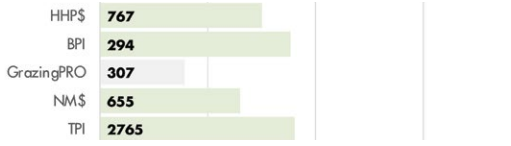
## 250HO13531 S-S-I MILLINGTON TOTEM-ET

**MILLINGTON X JACEY X SUDAN** TR TP TY TV TL TD TE HH1T HH2T HH3T HH4T HH5T HH6T

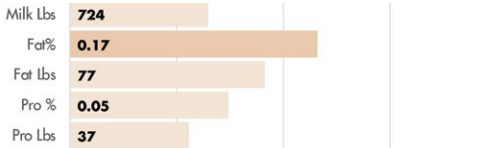
**HOLSTEIN** NASIS: 80FFMJG BETA CASEIN: A1A2 \$26 RRP \$65 SEXED  
 BPI: 294 OT: 106 MS: 105 MILKING SPEED: 102 TEMP: 101

DAM: JOSEY-LLC JCY SKYE 8948-ET GP-84  
 2-00 2X 305D 10449 KGM 3.6% 373 KGF 3.0% 313 KGP  
 MGD: DYMENTHOLM SUNVIEW SKYE VG-85  
 2-02 2X 305D 12950 KGM 3.9% 505 KGF 3.1% 398 KGP

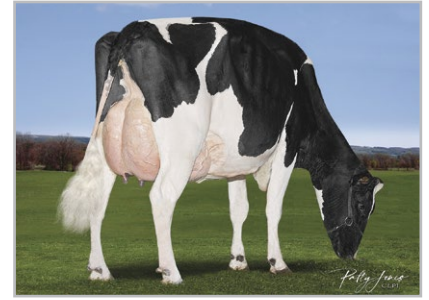
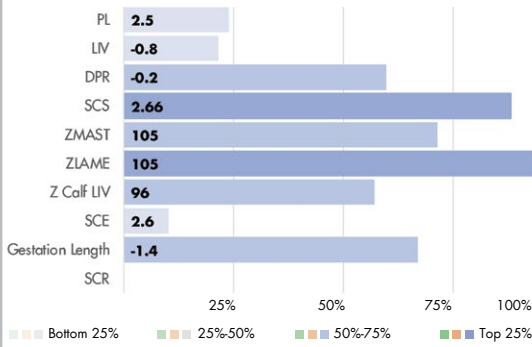
### INDEXES



### PRODUCTION



### HEALTH AND FERTILITY TRAITS



Brightridge Totem Beth VG-86

### PHYSICAL TRAIT EVALUATION

CDCB/HA Genetic Eval. 04-24  
 1576 dtrs. 633 herds  
 96% Rel.

PTAT: 1.88 UDC: 1.83 FLC: 1.09 TPI: 2765

Stature	Short		1.42	Tall
Strength	Frail		0.50	Strong
Body Depth	Shallow		0.66	Deep
Dairy Form	Tight Ribbed		1.86	Open Ribbed
Rump Width	Narrow		1.84	Wide
Rump Angle	High Pins		0.33	Sloped
Rear Leg (side view)	Posty		-1.19	Sickled
Rear Leg (rear view)	Hock-in		1.40	Straight
Foot Angle	Low Angle		1.44	Steep Angle
Feet & Leg Score	Low		1.31	High
Fore Udder	Loose		1.27	Strong
Rear Udder Height	Low		1.93	High
Rear Udder Width	Narrow		3.23	Wide
Udder Cleft	Weak		1.92	Strong
Udder Depth	Deep		1.80	Shallow
Front Teat Placement	Wide		2.40	Close
Rear Teat Placement	Wide		1.91	Close
Teat Length	Short		-0.92	Long



IB/MACE-G 04-24  
 CDN Genomic  
 Eval. 04-24  
 Zoetis 04-24

# TRIP-PP



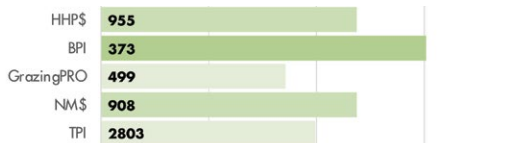
## 14HO16751 LARS-ACRES SSI C TRIP-PP-ET A2A2

**CIRRUS-P X EXTRA-P X LEGACY** TR PP TM TC TY TV TL TD TE HH1T HH2T HH3T HH4T HH5T HH6T

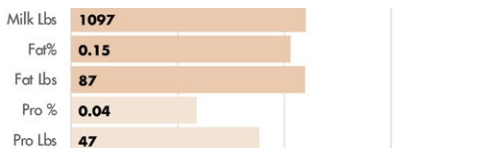
**HOLSTEIN** NASIS: 80FFVR7 BETA CASEIN: A2A2 \$32 RRP \$70 SEXED  
 BPI: 373 OT: 100 MS: 100 MILKING SPEED: 101 TEMP: 99

DAM: LARS-ACRES S-S-I 25766-ET  
 MGD: S-S-I LA 28180 22888-ET VG-85  
 3-03 3X 305D 11077 KGM 5.1% 560 KGF 3.5% 388 KGP

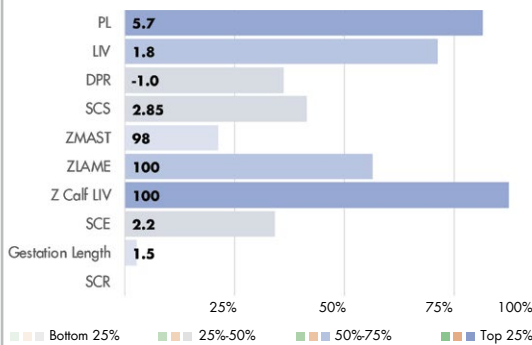
### INDEXES



### PRODUCTION



### HEALTH AND FERTILITY TRAITS



MGGD: Siemers Imax Roz 28180-ET VG-86



MGD: S-S-I La 28180 22888-ET VG-85

### PHYSICAL TRAIT EVALUATION

CDCB/HA Genetic Eval. 04-24  
 0 dtrs. 0 herds  
 78% Rel.

PTAT: 0.78 UDC: 1.01 FLC: 0.42 TPI: 2803

Stature	Short		-0.16	Tall
Strength	Frail		-0.12	Strong
Body Depth	Shallow		-0.23	Deep
Dairy Form	Tight Ribbed		0.57	Open Ribbed
Rump Width	Narrow		1.12	Wide
Rump Angle	High Pins		0.45	Sloped
Rear Leg (side view)	Posty		0.34	Sickled
Rear Leg (rear view)	Hock-in		0.58	Straight
Foot Angle	Low Angle		0.04	Steep Angle
Feet & Leg Score	Low		0.32	High
Fore Udder	Loose		0.67	Strong
Rear Udder Height	Low		0.99	High
Rear Udder Width	Narrow		1.37	Wide
Udder Cleft	Weak		1.17	Strong
Udder Depth	Deep		0.45	Shallow
Front Teat Placement	Wide		0.61	Close
Rear Teat Placement	Wide		1.39	Close
Teat Length	Short		-0.21	Long



USDA-CDCB  
 Genomic Eval.  
 04-24  
 CDN Genomic  
 Eval. 04-24  
 Zoetis 04-24

# ULYSSES



418 BPI

7HO15770 S-S-I BR TAOS ULYSSES-ET

TAOS X LEGACY X FRAZZLED TR TP TC TY TV TL TD TE HH1T HH2T HH3T HH4T HH5T HH6T

**HOLSTEIN** NASIS: 80FFTP4 BETA CASEIN: A1A2 \$24 RRP \$55 SEXED

BPI: 418 OT: 100 MS: 101 MILKING SPEED: 101 TEMP: 101

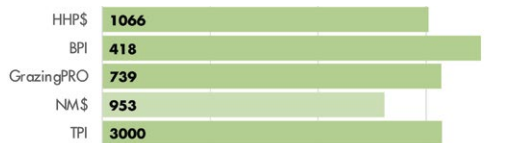
DAM: MELARRY S-S-I 2948 12427-ET G-78

3-04 3X 365D 14148 KGM 4.5% 630 KGF 3.5% 494 KGP

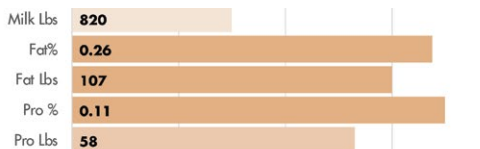
MGD: MELARRY FRAZZLD FANDANGO-ET

2-04 2X 305D 14145 KGM 3.7% 523 KGF 3.3% 463 KGP

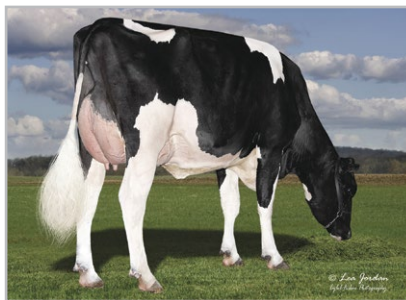
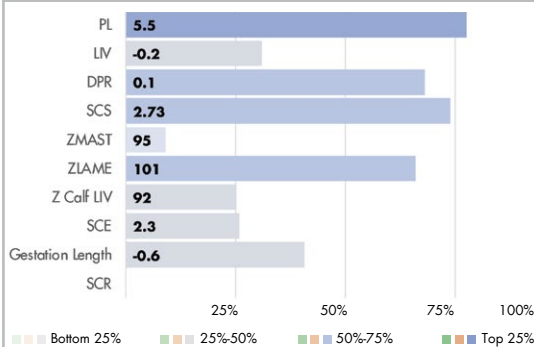
## INDEXES



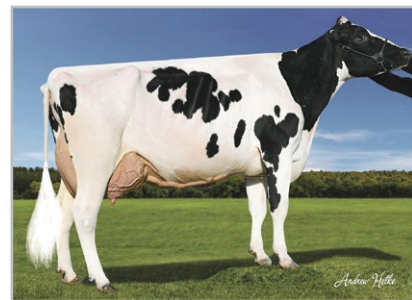
## PRODUCTION



## HEALTH AND FERTILITY TRAITS



Paternal sister: S-S-I Taos 10600 1721-ET GP-84



4th dam: Melarry Mogul Freck-ET EX-90

## PHYSICAL TRAIT EVALUATION

CDCB/HA Genetic Eval. 04-24  
0 dtrs. 0 herds  
81% Rel.

PTAT: 1.39 UDC: 1.41 FLC: 0.71 TPI: 3000

Stature	Short	0.88	Tall
Strength	Frail	0.50	Strong
Body Depth	Shallow	-0.05	Deep
Dairy Form	Tight Ribbed	0.10	Open Ribbed
Rump Width	Narrow	0.89	Wide
Rump Angle	High Pins	-0.19	Sloped
Rear Leg (side view)	Posty	-0.27	Sickled
Rear Leg (rear view)	Hock-in	0.73	Straight
Foot Angle	Low Angle	1.03	Steep Angle
Feet & Leg Score	Low	0.87	High
Fore Udder	Loose	1.94	Strong
Rear Udder Height	Low	1.74	High
Rear Udder Width	Narrow	1.58	Wide
Udder Cleft	Weak	0.81	Strong
Udder Depth	Deep	1.39	Shallow
Front Teat Placement	Wide	0.43	Close
Rear Teat Placement	Wide	0.60	Close
Teat Length	Short	0.24	Long



USDA-CDCB  
Genomic Eval.  
04-24  
CDN Genomic  
Eval. 04-24  
Zoetis 04-24

# UNDENIED



7HO13730 OUR-FAVORITE UNDENIED-ET **A2A2**

SOLOMON X G W ATWOOD X SHOTTLE TR TP TC TY TV TL TD TE HH1T HH2T HH3T HH4T HH5T HH6T

**HOLSTEIN** NASIS: 80FFNB9 BETA CASEIN: A2A2 \$26 RRP \$60 SEXED

BPI: -21 OT: 109 MS: 106 MILKING SPEED: 101 TEMP: 105

DAM: OUR-FAVORITE UNLIMITED EX-94

8-01 2X 365D 15431 KGM 4.5% 698 KGF 3.5% 540 KGP

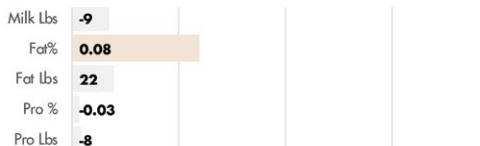
MGD: OUR-FAVORITE OBVIOUS-ET EX-93

6-05 2X 365D 17286 KGM 4.2% 729 KGF 3.2% 548 KGP

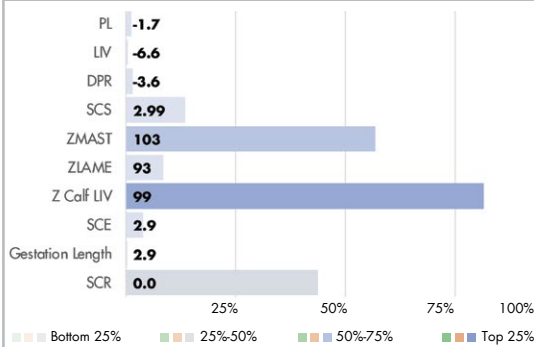
## INDEXES



## PRODUCTION



## HEALTH AND FERTILITY TRAITS



Kings-Ransom Undn Clever-ET VG-87

## PHYSICAL TRAIT EVALUATION

CDCB/HA Genetic Eval. 04-24  
3713 dtrs. 1636 herds  
99% Rel.

PTAT: 2.98 UDC: 0.91 FLC: 0.49 TPI: 1967

Stature	Short	3.95	Tall
Strength	Frail	2.97	Strong
Body Depth	Shallow	4.09	Deep
Dairy Form	Tight Ribbed	3.49	Open Ribbed
Rump Width	Narrow	3.23	Wide
Rump Angle	High Pins	0.23	Sloped
Rear Leg (side view)	Posty	0.34	Sickled
Rear Leg (rear view)	Hock-in	1.28	Straight
Foot Angle	Low Angle	2.20	Steep Angle
Feet & Leg Score	Low	1.23	High
Fore Udder	Loose	2.37	Strong
Rear Udder Height	Low	1.87	High
Rear Udder Width	Narrow	2.61	Wide
Udder Cleft	Weak	0.79	Strong
Udder Depth	Deep	1.03	Shallow
Front Teat Placement	Wide	0.62	Close
Rear Teat Placement	Wide	0.23	Close
Teat Length	Short	0.74	Long



IB/MACE-G 04-24  
CDN Genomic  
Eval. 04-24  
Zoetis 04-24



# WARRIOR-RED



HOLSTEIN

7HO14477 MR BLONDIN WARRIOR-RED-ET

**AVALANCHE\* RC X DOORMAN X GW ATWOOD** TP TC TY TV TL TD TE HH1T HH2T HH3T HH4T HH5T HH6T

**HOLSTEIN NASIS:** 80FFPF7 **BETA CASEIN:** A1A2 **\$34 RRP \$75 SEXED**

**BPI:** 155 **OT:** 102 **MS:** 105 **MILKING SPEED:** 100 **TEMP:** 103

DAM: TRIPLECROWN-JW DOOR WISP-ET VG-85

3-03 2X 365D 16142 KGM 4.0% 646 KGF 3.3% 534 KGP

MGD: BUTLERVIEW ATW WHISKEY-ET VG-87

1-10 2X 352D 10759 KGM 3.6% 391 KGF 2.9% 312 KGP

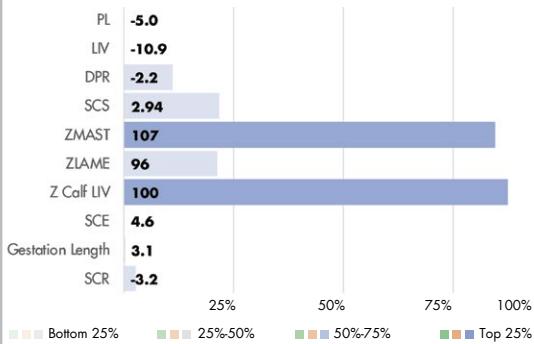
## INDEXES

HHP\$	-467
BPI	155
GrazingPRO	-686
NM\$	-632
TPI	1669

## PRODUCTION

Milk Lbs	-830
Fat%	0.02
Fat Lbs	-26
Pro %	0.03
Pro Lbs	-18

## HEALTH AND FERTILITY TRAITS



Apple-Pts Cranapple-Red-ET EX-92

## PHYSICAL TRAIT EVALUATION

PTAT: 2.78 UDC: 1.40 FLC: 1.18 TPI: 1669

CDCB/HA Genetic Eval. 04-24  
1883 dtrs. 768 herds  
99% Rel.

Stature	Short	4.47	Tall
Strength	Frail	2.26	Strong
Body Depth	Shallow	2.51	Deep
Dairy Form	Tight Ribbed	1.01	Open Ribbed
Rump Width	Narrow	1.79	Wide
Rump Angle	High Pins	0.11	Sloped
Rear Leg (side view)	Posty	0.49	Sickled
Rear Leg (rear view)	Hock-in	2.20	Straight
Foot Angle	Low Angle	2.55	Steep Angle
Feet & Leg Score	Low	1.96	High
Fore Udder	Loose	2.80	Strong
Rear Udder Height	Low	2.49	High
Rear Udder Width	Narrow	1.13	Wide
Udder Cleft	Weak	1.84	Strong
Udder Depth	Deep	3.42	Shallow
Front Teat Placement	Wide	1.05	Close
Rear Teat Placement	Wide	1.17	Close
Teat Length	Short	-0.88	Long



IB/MACE-G 04-24  
CDN Genomic  
Eval. 04-24  
Zoetis 04-24

# WIGGINS



381 BPI

7HO12724 T-SPRUCE SUPRSHT WIGGINS-ET **A2A2**

**SUPERSHOT X GALAXY X ROBUST** TR TP TY TV TL TD TE HH1T HH2T HH3T HH4T HH5T HH6T

**HOLSTEIN NASIS:** 80FFMDZ **BETA CASEIN:** A2A2 **\$22 RRP \$50 SEXED**

**BPI:** 381 **OT:** 107 **MS:** 107 **MILKING SPEED:** 101 **TEMP:** 103

DAM: EDG RILEY GALAXY 2364-ET VG-85

3-07 3X 305D 21632 KGM 3.5% 761 KGF 3.1% 672 KGP

MGD: CO-VISTA ROBUST RILEY EX-90

2-01 2X 305D 12487 KGM 3.9% 485 KGF 3.3% 417 KGP

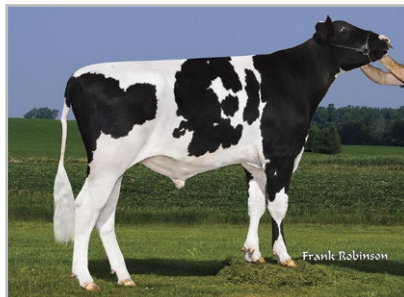
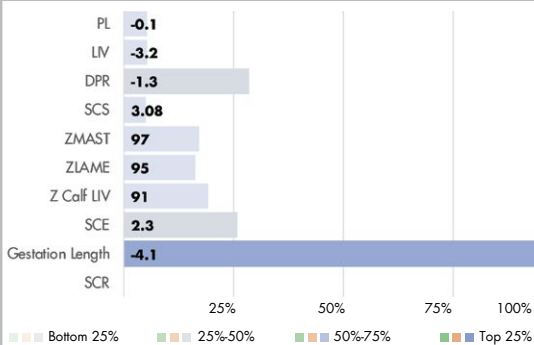
## INDEXES

HHP\$	478
BPI	381
GrazingPRO	-190
NM\$	373
TPI	2522

## PRODUCTION

Milk Lbs	1641
Fat%	-0.10
Fat Lbs	33
Pro %	0.05
Pro Lbs	67

## HEALTH AND FERTILITY TRAITS



Jobo Wiggins 8248 VG-85

## PHYSICAL TRAIT EVALUATION

PTAT: 2.11 UDC: 1.61 FLC: 0.08 TPI: 2522

CDCB/HA Genetic Eval. 04-24  
615 dtrs. 193 herds  
97% Rel.

Stature	Short	2.27	Tall
Strength	Frail	1.61	Strong
Body Depth	Shallow	1.56	Deep
Dairy Form	Tight Ribbed	1.94	Open Ribbed
Rump Width	Narrow	1.66	Wide
Rump Angle	High Pins	0.02	Sloped
Rear Leg (side view)	Posty	1.11	Sickled
Rear Leg (rear view)	Hock-in	0.16	Straight
Foot Angle	Low Angle	0.29	Steep Angle
Feet & Leg Score	Low	0.72	High
Fore Udder	Loose	2.36	Strong
Rear Udder Height	Low	2.93	High
Rear Udder Width	Narrow	3.41	Wide
Udder Cleft	Weak	0.83	Strong
Udder Depth	Deep	0.54	Shallow
Front Teat Placement	Wide	0.79	Close
Rear Teat Placement	Wide	0.86	Close
Teat Length	Short	1.80	Long



IB/MACE-G 04-24  
CDN Genomic  
Eval. 04-24  
Zoetis 04-24

# ZAFAR P RED



250HO16526 CLAYNOOK ZAFAR P RED

**MCDONALD-P-RED X MARK \*RC X DUKE** PC TC TY TV TL TD TE HH1T HH2T HH3T HH4T HH5T HH6T

DAM: CLAYNOOK ZORA MARK

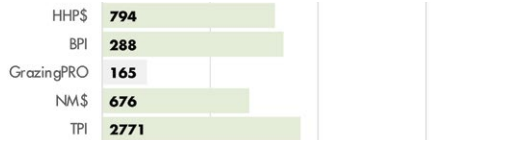
**HOLSTEIN** NASIS: 80FFU80 BETA CASEIN: A1A1 \$22 RRP \$50 SEXED

MGD: MORNINGVIEW DUKE ZIP GP-84

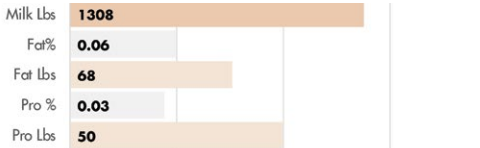
BPI: 288 OT: 101 MS: 106 MILKING SPEED: 102 TEMP: 102

2-03 2X 365D 15469 KGM 5.3% 819 KGF 3.5% 542 KGP

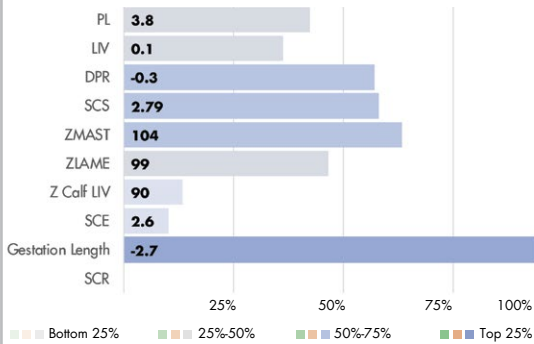
## INDEXES



## PRODUCTION



## HEALTH AND FERTILITY TRAITS



MGGD: Morningview Yoder Zeplin EX-90

## PHYSICAL TRAIT EVALUATION

CDCB/HA Genetic Eval. 04-24  
0 dtrs. 0 herds  
78% Rel.

PTAT: 1.79 UDC: 1.99 FLC: 0.42 TPI: 2771

Stature	Short	1.67	Tall
Strength	Frail	0.45	Strong
Body Depth	Shallow	0.56	Deep
Dairy Form	Tight Ribbed	1.65	Open Ribbed
Rump Width	Narrow	1.16	Wide
Rump Angle	High Pins	0.42	Sloped
Rear Leg (side view)	Posty	0.21	Sickled
Rear Leg (rear view)	Hock-in	0.61	Straight
Foot Angle	Low Angle	0.98	Steep Angle
Feet & Leg Score	Low	0.76	High
Fore Udder	Loose	2.37	Strong
Rear Udder Height	Low	2.88	High
Rear Udder Width	Narrow	2.75	Wide
Udder Cleft	Weak	0.71	Strong
Udder Depth	Deep	1.68	Shallow
Front Teat Placement	Wide	1.11	Close
Rear Teat Placement	Wide	0.99	Close
Teat Length	Short	0.09	Long



USDA-CDCB  
Genomic Eval.  
04-24  
CDN Genomic  
Eval. 04-24  
Zoetis 04-24

# DYNAMIC



9AY00130 GOOD-VUE-KP DYNAMIC

**RADISSON X GIBBS X CALIMERO** AH1T AH2T AHCT

DAM: GRAND-VIEW HP GIBBS DIPS EX-93

3-03 3X 292D 7321 KGM 3.7% 274 KGF 2.9% 210 KGP

**AYRSHIRE** NASIS: 80AYS10 BETA CASEIN: A1A1 \$16 RRP

MGD: GRAND-VIEW CALIMERO DEA EX-91

BPI: -141 OT: 101 MS: 98 MILKING SPEED: 98

2-00 2X 365D 9861 KGM 4.0% 396 KGF 3.2% 319 KGP

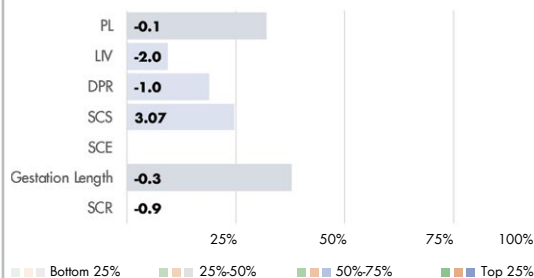
## INDEXES



## PRODUCTION



## HEALTH AND FERTILITY TRAITS



Dam: Grand-View HP Gibbs Dips-ET EX-93

## PHYSICAL TRAIT EVALUATION

CDCB/ABA Genetic Eval. 04-24  
0 dtrs. 0 herds  
45% Rel.

PTAT: 0.80 PTI: 349

Stature	Short	1.60	Tall
Strength	Frail	0.60	Strong
Body Depth	Shallow	0.90	Deep
Dairy Form	Tight Ribbed	0.70	Open Ribbed
Rump Width	Narrow	0.70	Wide
Rump Angle	High Pins	-1.30	Sloped
Rear Leg (side view)	Posty	-0.40	Sickled
Rear Leg (rear view)	Hock-in	0.40	Steep Angle
Foot Angle	Low Angle	1.60	Strong
Fore Udder	Loose	1.00	High
Rear Udder Height	Low	0.60	Wide
Rear Udder Width	Narrow	0.20	Strong
Udder Cleft	Weak	1.50	Shallow
Udder Depth	Deep	0.90	Close
Front Teat Placement	Wide	0.90	Close
Teat Length	Short	-1.10	Long



USDA-CDCB  
Genomic Eval.  
04-24  
CDN Genomic  
Eval. 04-24  
Zoetis 04-24



# BEACON



BROWN SWISS

7BS00897 R HART ATLANTAS BEACON ETV

**BIVER X BROOKINGS X WONDERMENT** TM BHPT BH2T BHMT BHWT BH14T BHDT

**BROWN SWISS** NASIS: 80SBN06 BETA CASEIN: A1A2 \$12 RRP

**BPI: 126 MILKING SPEED: 101 TEMP: 103**

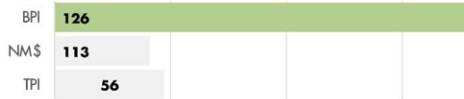
DAM: R HART BROOKINGS ATLANTA EX-91

4-02 3X 365D 15557 KGM 4.4% 688 KGF 3.5% 548 KGP

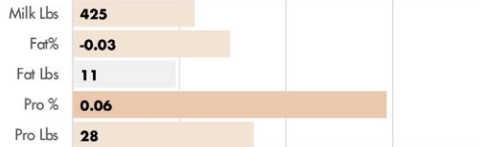
MGD: R HART WONDER ALANA ET VG-85

3-10 2X 365D 12252 KGM 4.5% 553 KGF 3.1% 382 KGP

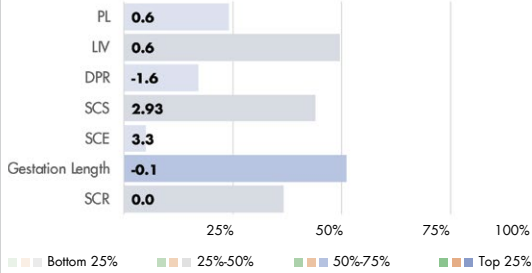
## INDEXES



## PRODUCTION



## HEALTH AND FERTILITY TRAITS



Elgens-Happy Beacon Fiona



Dam: R Hart Brookings Atlanta EX-91

## PHYSICAL TRAIT EVALUATION

CDCB/BSBA Genetic Eval. 04-24

47 dtrs. 26 herds

87% Rel.

PTAT: 0.40 UDC: 0.17 PTI: 56

Stature	Short	2.90	Tall
Strength	Frail	0.90	Strong
Dairy Form	Tight Ribbed	0.20	Open Ribbed
Rump Width	Narrow	0.80	Wide
Rump Angle	High Pins	2.30	Sloped
Rear Leg (side view)	Posty	-0.30	Sickled
Rear Leg (rear view)	Hock-in	0.00	Straight
Foot Angle	Low Angle	1.10	Steep Angle
Fore Udder	Loose	0.60	Strong
Rear Udder Height	Low	0.30	High
Rear Udder Width	Narrow	-0.40	Wide
Udder Cleft	Weak	0.00	Strong
Udder Depth	Deep	0.50	Shallow
Front Teat Placement	Wide	0.30	Close
Teat Length	Short	-1.50	Long



USDA-CDCB  
Genomic Eval.  
04-24  
CDN Genomic  
Eval. 04-24  
Zoetis 04-24

# BODACIOUS



14BS00394 LA RAINBOW SW BODACIOUS ETV

**DEEGAN X DURHAM X SCIPIO** TM BHPT BH2T BHMT BHWT BH14T BHDT

**BROWN SWISS** NASIS: 80SBM15 BETA CASEIN: A1A2 \$12 RRP

**BPI: -4 MILKING SPEED: 100**

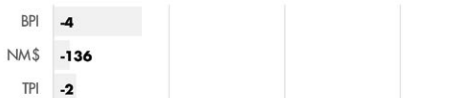
DAM: LA RAINBOW SWEET CATALINA VG-85

1-11 2X 365D 9797 KGM 4.9% 482 KGF 3.8% 375 KGP

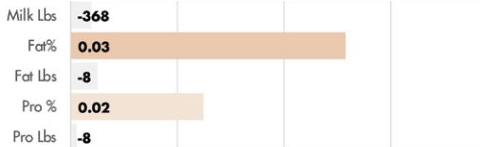
MGD: LA RAINBOW SWEET CADENCE VG-88

4-06 2X 365D 12292 KGM 4.4% 544 KGF 3.6% 438 KGP

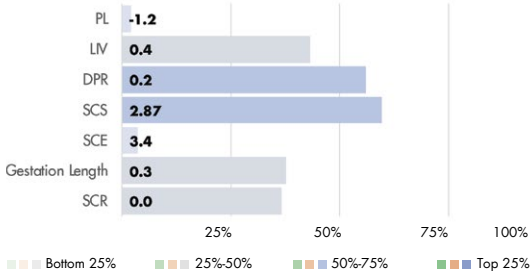
## INDEXES



## PRODUCTION



## HEALTH AND FERTILITY TRAITS



Dam: La Rainbow Sweet Catalina VG-85

## PHYSICAL TRAIT EVALUATION

CDCB/BSBA Genetic Eval. 04-24

46 dtrs. 25 herds

86% Rel.

PTAT: 0.40 UDC: 1.07 PTI: -2

Stature	Short	0.70	Tall
Strength	Frail	1.00	Strong
Dairy Form	Tight Ribbed	0.10	Open Ribbed
Rump Width	Narrow	0.30	Wide
Rump Angle	High Pins	-1.60	Sloped
Rear Leg (side view)	Posty	-0.70	Sickled
Rear Leg (rear view)	Hock-in	0.20	Straight
Foot Angle	Low Angle	0.40	Steep Angle
Fore Udder	Loose	1.40	Strong
Rear Udder Height	Low	0.00	High
Rear Udder Width	Narrow	0.70	Wide
Udder Cleft	Weak	1.10	Strong
Udder Depth	Deep	1.30	Shallow
Front Teat Placement	Wide	1.80	Close
Teat Length	Short	-1.70	Long



USDA-CDCB  
Genomic Eval.  
04-24  
CDN Genomic  
Eval. 04-24  
Zoetis 04-24

# DESPERADO



9BS00932 HILLTOP ACRES DESPERADO ETV **A2A2**

**O MALLEY X LUCKY CARL X ANIBAL** BHPT BH2T BHMT BHWT BH14T BHDT

**BROWN SWISS** NASIS: 80SBT14 BETA CASEIN: A2A2 \$14 RRP \$40 SEXED

DAM: HILLTOP ACRES LC DESSA GP-84

1-11 3X 305D 11673 KGM 4.0% 473 KGF 3.1% 361 KGP

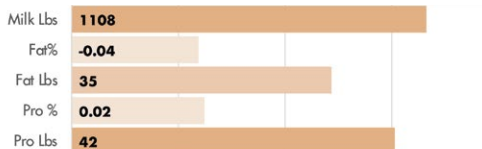
MGD: HILLTOP ACRES AN DANDELION VG-85

3-08 3X 365D 15876 KGM 6.0% 952 KGF 3.4% 533 KGP

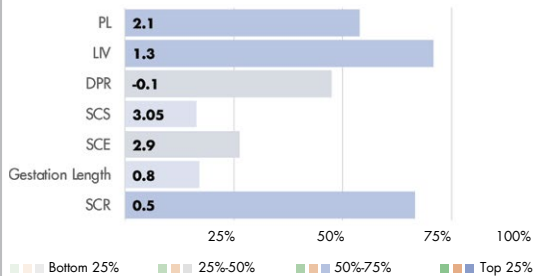
## INDEXES



## PRODUCTION



## HEALTH AND FERTILITY TRAITS



Dam: Hilltop Acres Lc Dessa GP-84

## PHYSICAL TRAIT EVALUATION

CDCB/BSBA Genetic Eval. 04-24  
0 dtrs. 0 herds  
68% Rel.

PTAT: 0.60 UDC: 0.55 PTI: 136

Stature	Short		2.80	Tall
Strength	Frail		0.90	Strong
Dairy Form	Tight Ribbed		0.30	Open Ribbed
Rump Width	Narrow		1.20	Wide
Rump Angle	High Pins		0.60	Sloped
Rear Leg (side view)	Posty		0.50	Sickled
Rear Leg (rear view)	Hock-in		0.30	Straight
Foot Angle	Low Angle		1.30	Steep Angle
Fore Udder	Loose		0.60	Strong
Rear Udder Height	Low		0.80	High
Rear Udder Width	Narrow		0.60	Wide
Udder Cleft	Weak		0.40	Strong
Udder Depth	Deep		0.30	Shallow
Front Teat Placement	Wide		-0.30	Close
Teat Length	Short		1.40	Long



USDA-CDCB  
Genomic Eval.  
04-24  
CDN Genomic  
Eval. 04-24  
Zoetis 04-24

# DYNAMITE



14BS00393 LA RAINBOW BFLY DYNAMITE ETV **A2A2**

**CADENCE X DURHAM X SUPREME** TM BHPT BH2T BHMT BHWT BH14T BHDT

**BROWN SWISS** NASIS: 80SBM09 BETA CASEIN: A2A2 \$16 RRP

**BPI: 125 MILKING SPEED: 102 TEMP: 96**

DAM: LA RAINBOW BFLY DELIGHT ET EX-91

4-02 3X 305D 9122 KGM 4.1% 373 KGF 3.3% 302 KGP

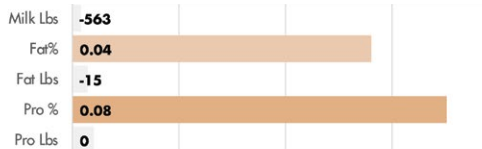
MGD: LA RAINBOW BFLY SUNLIGHT ETV VG-85

2-00 2X 365D 8106 KGM 4.4% 353 KGF 3.6% 294 KGP

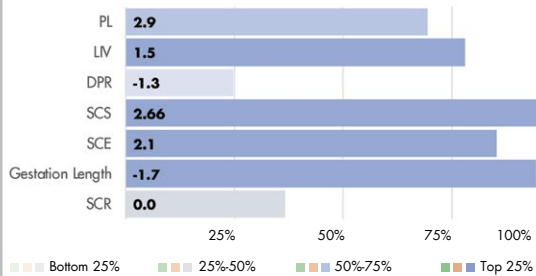
## INDEXES



## PRODUCTION



## HEALTH AND FERTILITY TRAITS



Schweizer Dynamite Chanel VG-86

## PHYSICAL TRAIT EVALUATION

CDCB/BSBA Genetic Eval. 04-24  
1441 dtrs. 556 herds  
99% Rel.

PTAT: 0.50 UDC: 1.25 PTI: 23

Stature	Short		-0.10	Tall
Strength	Frail		-0.30	Strong
Dairy Form	Tight Ribbed		-1.20	Open Ribbed
Rump Width	Narrow		0.40	Wide
Rump Angle	High Pins		0.80	Sloped
Rear Leg (side view)	Posty		0.00	Sickled
Rear Leg (rear view)	Hock-in		0.30	Straight
Foot Angle	Low Angle		0.50	Steep Angle
Fore Udder	Loose		2.50	Strong
Rear Udder Height	Low		1.00	High
Rear Udder Width	Narrow		-0.40	Wide
Udder Cleft	Weak		0.40	Strong
Udder Depth	Deep		2.70	Shallow
Front Teat Placement	Wide		2.20	Close
Teat Length	Short		-3.00	Long



Accelerated Genetics



IB/MACE-G 04-24  
CDN Genomic  
Eval. 04-24  
Zoetis 04-24



# JUKEBOX PP



BROWN SWISS

7BS00908 TROUT RUN CAR JUKEBOX PP ET **A2A2**

**CAR X CARTEL X CROATT ANDY NP** TM BHPC BH2T BHMT BHWT BH14T BHD

**BROWN SWISS** NASIS: 80SBP20 **BETA CASEIN:** A2A2 \$14 RRP **SEXED**

**BPI:** 63

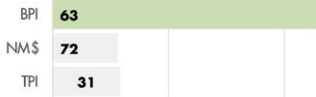
DAM: TROUT RUN CARTEL JOY NP VG-85

2-00 3X 321D 7915 KGM 4.2% 332 KGF 3.4% 267 KGP

MGD: TROUT RUN JILL P ET VG-85

4-00 2X 307D 8754 KGM 4.8% 420 KGF 3.3% 288 KGP

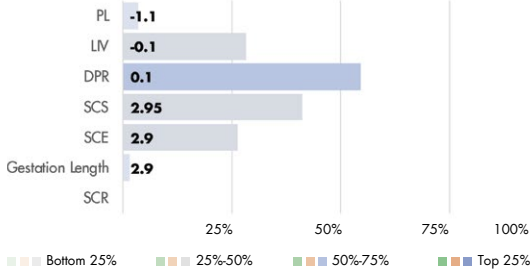
## INDEXES



## PRODUCTION



## HEALTH AND FERTILITY TRAITS



PGD: Voelkers Brook Cara EX-92

## PHYSICAL TRAIT EVALUATION

CDCB/BSBA Genetic Eval. 04-24  
7 dtrs. 3 herds  
74% Rel.

PTAT: -0.10 UDC: 0.00 PTI: 31

Stature	Short		-0.90	Tall
Strength	Frail		-0.10	Strong
Dairy Form	Tight Ribbed		0.60	Open Ribbed
Rump Width	Narrow		-0.80	Wide
Rump Angle	High Pins		-1.20	Sloped
Rear Leg (side view)	Posty		0.50	Sickled
Rear Leg (rear view)	Hock-in		0.20	Straight
Foot Angle	Low Angle		-0.10	Steep Angle
Fore Udder	Loose		-0.90	Strong
Rear Udder Height	Low		0.10	High
Rear Udder Width	Narrow		1.00	Wide
Udder Cleft	Weak		0.20	Strong
Udder Depth	Deep		-1.30	Shallow
Front Teat Placement	Wide		0.00	Close
Teat Length	Short		0.80	Long



USDA-CDCB  
Genomic Eval.  
04-24  
CDN Genomic  
Eval. 04-24  
Zoetis 04-24

# PAPARAZZI



9BS00916 HILLTOP ACRES PAPARAZZI ETV

**TOBY X CADENCE X BUSH** BHPT BH2T BHMT BHWT BH14T BHD

**BROWN SWISS** NASIS: 80SBS25 **BETA CASEIN:** A1A2 \$12 RRP

**BPI:** -110 **MILKING SPEED:** 101

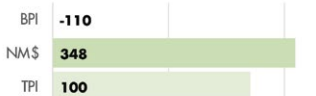
DAM: HILLTOP ACRES CAD PAULA VG-87

7-03 3X 365D 17627 KGM 4.8% 852 KGF 3.7% 650 KGP

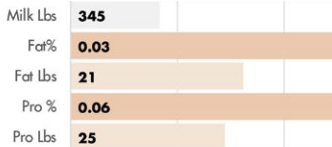
MGD: HILLTOP ACRES BUSH DENVER GP-83

4-03 3X 365D 15136 KGM 4.3% 650 KGF 3.7% 563 KGP

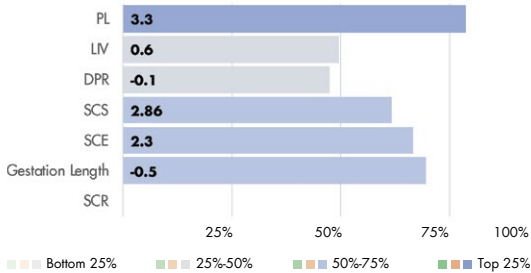
## INDEXES



## PRODUCTION



## HEALTH AND FERTILITY TRAITS



Dam: Hilltop Acres Cad Paula VG-87

Hilltop Acres Pap Kate ETV

## PHYSICAL TRAIT EVALUATION

CDCB/BSBA Genetic Eval. 04-24  
7 dtrs. 3 herds  
76% Rel.

PTAT: 0.60 UDC: 0.74 PTI: 100

Stature	Short		1.10	Tall
Strength	Frail		0.00	Strong
Dairy Form	Tight Ribbed		-0.10	Open Ribbed
Rump Width	Narrow		0.20	Wide
Rump Angle	High Pins		3.20	Sloped
Rear Leg (side view)	Posty		-0.80	Sickled
Rear Leg (rear view)	Hock-in		-0.20	Straight
Foot Angle	Low Angle		0.00	Steep Angle
Fore Udder	Loose		1.30	Strong
Rear Udder Height	Low		1.40	High
Rear Udder Width	Narrow		-0.20	Wide
Udder Cleft	Weak		0.20	Strong
Udder Depth	Deep		1.30	Shallow
Front Teat Placement	Wide		0.40	Close
Teat Length	Short		0.50	Long



USDA-CDCB  
Genomic Eval.  
04-24  
CDN Genomic  
Eval. 04-24  
Zoetis 04-24

# RAMPAGE



7BS00905 **KAR-LINN REESES RAMPAGE A2A2**

**BIVER X WONDERMENT X SUPREME** TM BHPT BH2T BHMT BHWT BH14T BHDT

**BROWN SWISS** NASIS: 80SBP21 **BETA CASEIN:** A2A2 \$14 RRP \$40 SEXED

**BPI:** -30 **MILKING SPEED:** 100 **TEMP:** 102

DAM: KAR-LINN WONDRMNT REESE ET EX-93

5-09 2X 305D 11802 KGM 5.2% 619 KGF 3.0% 357 KGP

MGD: KAR-LINN SUPREME REAGAN EX-91

2-05 2X 305D 8868 KGM 4.5% 400 KGF 3.5% 310 KGP

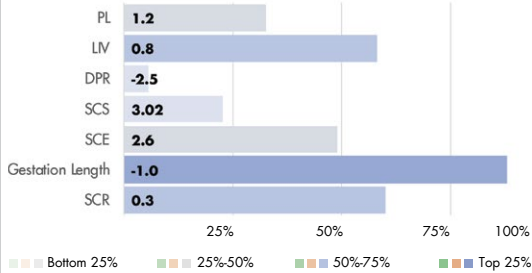
## INDEXES

BPI **-30**  
 NM\$ **-35**  
 TPI **-1**

## PRODUCTION

Milk Lbs **456**  
 Fat% **-0.13**  
 Fat Lbs **-11**  
 Pro % **-0.03**  
 Pro Lbs **9**

## HEALTH AND FERTILITY TRAITS



Brown Velvet Rampage Fall EX-93

## PHYSICAL TRAIT EVALUATION

CDCB/BSBA Genetic Eval. 04-24  
 186 dtrs. 95 herds  
 94% Rel.

PTAT: 0.50 UDC: 0.75 PTI: -1

Stature	Short	1.90	Tall
Strength	Frail	0.70	Strong
Dairy Form	Tight Ribbed	0.20	Open Ribbed
Rump Width	Narrow	1.10	Wide
Rump Angle	High Pins	1.10	Sloped
Rear Leg (side view)	Posty	0.50	Sickled
Rear Leg (rear view)	Hock-in	-0.20	Straight
Foot Angle	Low Angle	0.00	Steep Angle
Fore Udder	Loose	1.00	Strong
Rear Udder Height	Low	0.60	High
Rear Udder Width	Narrow	0.90	Wide
Udder Cleft	Weak	-0.10	Strong
Udder Depth	Deep	0.20	Shallow
Front Teat Placement	Wide	1.60	Close
Teat Length	Short	-2.30	Long



IB/MACE-G 04-24  
 CDN Genetic Eval. 04-24  
 Zoetis 04-24

# SAIGON



9BS00942 **MEADO-BROOK TANK SAIGON ET P A2A2**

**TANK X JAY P X CARTEL** BHPC BH2T BHMT BHWT BH14T BHDT

**BROWN SWISS** NASIS: 80SBV23 **BETA CASEIN:** A2A2 \$14 RRP \$40 SEXED

DAM: MEADO-BROOK SARAS SNAP ET-P VG-85

4-08 3X 365D 14057 KGM 4.6% 643 KGF 3.7% 515 KGP

MGD: MEADO-BROOK DREAMIN SARA-ET VG-87

4-10 3X 278D 12964 KGM 4.5% 583 KGF 3.3% 434 KGP

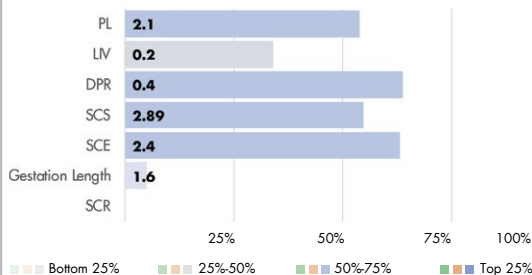
## INDEXES

BPI  
 NM\$ **436**  
 TPI **131**

## PRODUCTION

Milk Lbs **378**  
 Fat% **0.10**  
 Fat Lbs **40**  
 Pro % **0.07**  
 Pro Lbs **29**

## HEALTH AND FERTILITY TRAITS



MGD: Meado-Brook Dreamin Sara-ET VG-87

Dam: Meado-Brook Saras Snap ET-P VG-85

## PHYSICAL TRAIT EVALUATION

CDCB/BSBA Genetic Eval. 04-24  
 0 dtrs. 0 herds  
 67% Rel.

PTAT: 0.40 UDC: 1.08 FLC: PTI: 131

Stature	Short	1.20	Tall
Strength	Frail	0.10	Strong
Dairy Form	Tight Ribbed	0.90	Open Ribbed
Rump Width	Narrow	0.10	Wide
Rump Angle	High Pins	-0.10	Sloped
Rear Leg (side view)	Posty	0.20	Sickled
Rear Leg (rear view)	Hock-in	0.00	Straight
Foot Angle	Low Angle	0.10	Steep Angle
Fore Udder	Loose	1.50	Strong
Rear Udder Height	Low	0.70	High
Rear Udder Width	Narrow	0.60	Wide
Udder Cleft	Weak	0.70	Strong
Udder Depth	Deep	1.50	Shallow
Front Teat Placement	Wide	1.20	Close
Teat Length	Short	0.40	Long



USDA-CDCB  
 Genomic Eval. 04-24  
 CDN Genomic Eval. 04-24  
 Zoetis 04-24





# KANDYMAN



6GU00117 MEADOW GLOW L KANDYMAN **A2A2**

**LONDON X JAGUAR X AARON**

**GUERNSEY** NASIS: 80GGT10 BETA CASEIN: A2A2 \$26 RRP

**BPI: 18 OT: 96 MS: 99 MILKING SPEED: TEMP:**

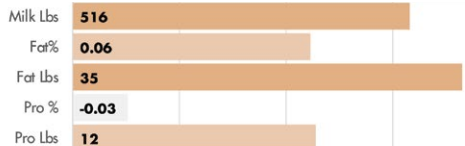
DAM: MEADOW GLOW JAGUAR KANDYAPPLE GP-83  
3-08 2X 365D 8246 KGM 4.4% 367 KGF 3.2% 263 KGP

MGD: MEADOW GLOW AARON KAREN GP-81  
4-03 2X 365D 8118 KGM 5.0% 406 KGF 3.6% 290 KGP

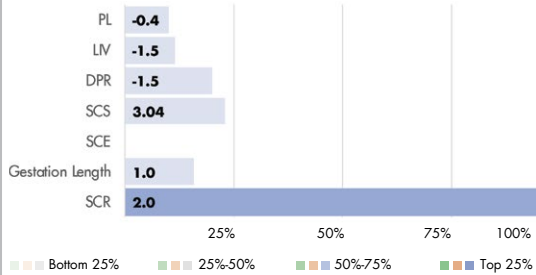
## INDEXES



## PRODUCTION



## HEALTH AND FERTILITY TRAITS



Jaguar dir: Marodore Jaguar Frosty VG-88

## PHYSICAL TRAIT EVALUATION

CDCB/AGA Genetic Eval. 04-24  
0 dtrs. 0 herds  
57% Rel.

PTAT: 0.90 UDC: 0.30 FLC: 0.90 TPI: 50

Stature	Short		3.00	Tall
Strength	Frail		1.20	Strong
Body Depth	Shallow		1.70	Deep
Dairy Form	Tight Ribbed		2.90	Open Ribbed
Rump Width	Narrow		1.80	Wide
Rump Angle	High Pins		0.10	Sloped
Rear Leg (side view)	Posty		0.60	Sickled
Rear Leg (rear view)	Hock-in		0.40	Straight
Foot Angle	Low Angle		0.40	Steep Angle
Fore Udder	Loose		-0.60	Strong
Rear Udder Height	Low		1.70	High
Rear Udder Width	Narrow		2.70	Wide
Udder Cleft	Weak		0.80	Strong
Udder Depth	Deep		-1.30	Shallow
Front Teat Placement	Wide		0.60	Close
Teat Length	Short		0.80	Long



USDA-CDCB  
Genomic Eval.  
04-24  
CDN Genomic  
Eval. 04-24  
Zoetis 04-24

# BARLEY



7JE01838 PINE-TREE CHROME BARLEY 2139-ET **A2A2**

**CHROME X DISCO X DIMENSION** JNS-TF JH1F JHPF

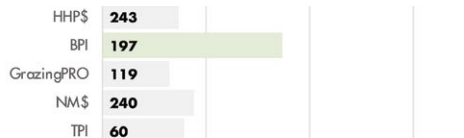
**JERSEY** NASIS: 80JJS62 BETA CASEIN: A2A2 \$12 RRP

**BPI: 197 OT: 97 MS: 102 MILKING SPEED: 100 TEMP: 102**

DAM: PINE-TREE DISCO BITTY 1702

MGD: PINE-TREE DIMENSION SAW-ET VG-85  
5-03 3X 305D 7883 KGM 6.4% 502 KGF 4.1% 320 KGP

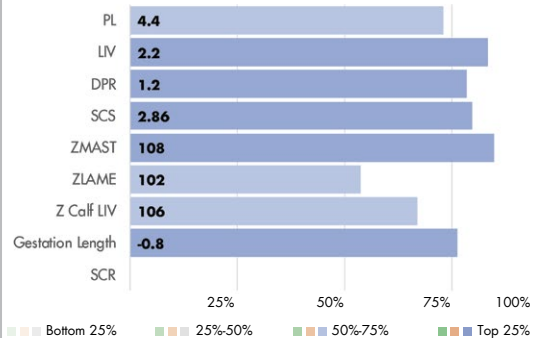
## INDEXES



## PRODUCTION



## HEALTH AND FERTILITY TRAITS



Paternal sister: Cairnbrae Chrome Daisy

Paternal sister: Kaarmona  
Chrome Babe 315, EX-91

## PHYSICAL TRAIT EVALUATION

CDCB/AJCA Genetic Eval. 04-24  
6 dtrs. 5 herds  
83% Rel.

PTAT: 1.20 JUI: 8.70 JPI: 60

Stature	Short		0.00	Tall
Strength	Frail		-0.40	Strong
Dairy Form	Tight Ribbed		1.40	Open Ribbed
Rump Width	Narrow		0.50	Wide
Rump Angle	High Pins		-1.10	Sloped
Rear Leg (side view)	Posty		1.00	Sickled
Foot Angle	Low Angle		-0.50	Steep Angle
Fore Udder	Loose		0.80	Strong
Rear Udder Height	Low		0.30	High
Rear Udder Width	Narrow		1.00	Wide
Udder Cleft	Weak		1.20	Strong
Udder Depth	Deep		-0.40	Shallow
Front Teat Placement	Wide		2.70	Close
Rear Teat (rear view)	Wide		2.00	Close
Rear Teat (side view)	Close		-0.90	Back
Teat Length	Short		-0.20	Long



USDA-CDCB  
Genomic Eval.  
04-24  
CDN Genomic  
Eval. 04-24  
Zoetis 04-24



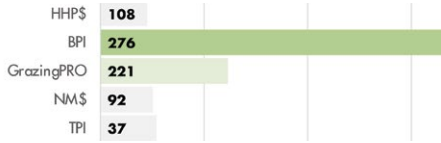
## 14JE00725 ELLIOTTS REGENCY CASINO-ET **A2A2**

**REGENCY X PREMIER X CONNECTION** JNS-TF JH1F JHPF

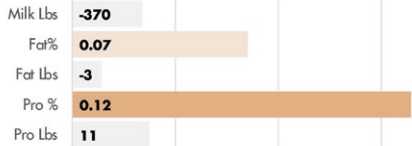
**JERSEY** NASIS: 80JIM32 **BETA CASEIN: A2A2** \$24 RRP  
**BPI: 276 OT: 104 MS: 104 MILKING SPEED: 97 TEMP: 103**

DAM: CHILLI PREMIER CINEMA-ET EX-93  
 4-02 3X 305D 9603 KGM 5.6% 538 KGF 3.9% 374 KGP  
 MGD: FAMILY HILL CONNECTION CHILLI-ET EX-91  
 2-05 3X 266D 7965 KGM 7.6% 606 KGF 4.0% 315 KGP

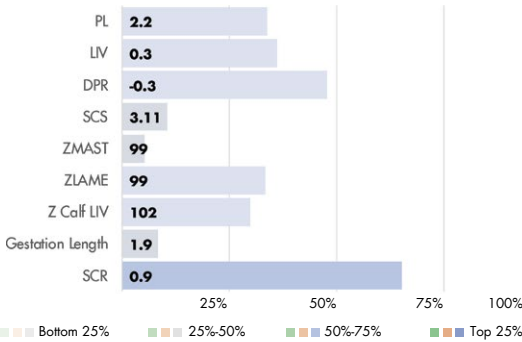
### INDEXES



### PRODUCTION



### HEALTH AND FERTILITY TRAITS



Cairnbrae Casino Daisy

### PHYSICAL TRAIT EVALUATION

CDCB/AJCA Genetic Eval. 04-24  
 3682 dtrs. 767 herds  
 99% Rel.

PTAT: 2.00 JUL: 18.40 JPI: 37

Stature	Short	1.90	Tall
Strength	Frail	0.60	Strong
Dairy Form	Tight Ribbed	1.30	Open Ribbed
Rump Width	Narrow	0.90	Wide
Rump Angle	High Pins	-1.00	Sloped
Rear Leg (side view)	Posty	-0.10	Sickled
Foot Angle	Low Angle	0.20	Steep Angle
Fore Udder	Loose	2.70	Strong
Rear Udder Height	Low	1.70	High
Rear Udder Width	Narrow	0.70	Wide
Udder Cleft	Weak	1.80	Strong
Udder Depth	Deep	2.10	Shallow
Front Teat Placement	Wide	2.60	Close
Rear Teat (rear view)	Wide	3.50	Close
Rear Teat (side view)	Close	-0.30	Back
Teat Length	Short	-1.40	Long



IB/MACE-G 04-24  
 CDN Genomic  
 Eval. 04-24  
 Zoetis 04-24

# CHROME



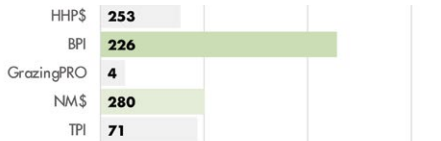
## 7JE05004 RIVER VALLEY CECE CHROME-ET **A2A2**

**CRITIC-P X CELEBRITY X LYON** JNSC JH1F JHPF

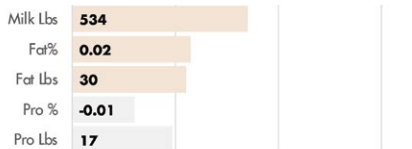
**JERSEY** NASIS: 80JK17 **BETA CASEIN: A2A2** \$22 RRP **\$50 SEXED**  
**BPI: 226 OT: 101 MS: 106 MILKING SPEED: 100 TEMP: 103**

DAM: LYON CELEBRITY CECE-ET EX-91  
 4-03 3X 271D 10278 KGM 4.4% 453 KGF 3.6% 373 KGP  
 MGD: LYON CHARACTER EX-94  
 7-06 3X 176D 6160 KGM 5.1% 315 KGF 3.3% 205 KGP

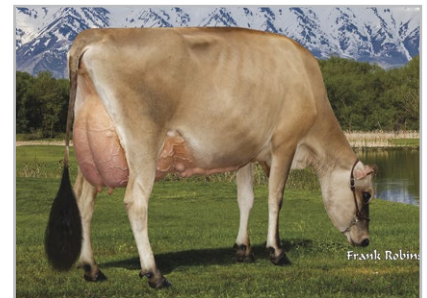
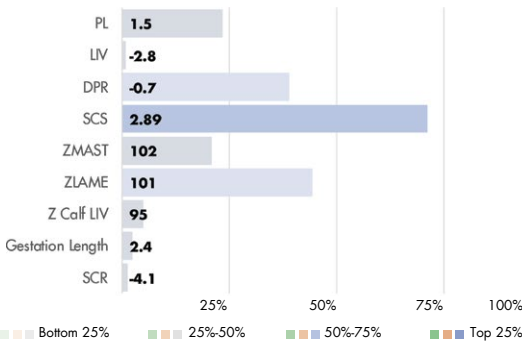
### INDEXES



### PRODUCTION



### HEALTH AND FERTILITY TRAITS



DC Chrome Dream Maker EX-93

### PHYSICAL TRAIT EVALUATION

CDCB/AJCA Genetic Eval. 04-24  
 11444 dtrs. 1043 herds  
 99% Rel.

PTAT: 1.90 JUL: 17.90 JPI: 71

Stature	Short	0.70	Tall
Strength	Frail	-0.90	Strong
Dairy Form	Tight Ribbed	1.80	Open Ribbed
Rump Width	Narrow	0.30	Wide
Rump Angle	High Pins	-0.50	Sloped
Rear Leg (side view)	Posty	0.70	Sickled
Foot Angle	Low Angle	-0.10	Steep Angle
Fore Udder	Loose	1.80	Strong
Rear Udder Height	Low	1.70	High
Rear Udder Width	Narrow	1.90	Wide
Udder Cleft	Weak	1.80	Strong
Udder Depth	Deep	1.40	Shallow
Front Teat Placement	Wide	2.50	Close
Rear Teat (rear view)	Wide	2.20	Close
Rear Teat (side view)	Close	1.30	Back
Teat Length	Short	-0.10	Long



IB/MACE-G 04-24  
 CDN Genomic  
 Eval. 04-24  
 Zoetis 04-24





# FIRSTCUT



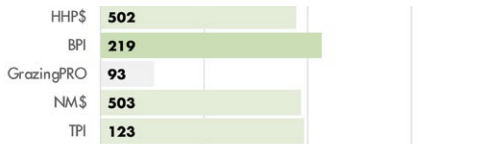
JERSEY

7JE02102 DUPAT FIRSTCUT-ET **A2A2**  
**HOLEINONE X FEARLESS X SPARKY** JNS-TF JH1F JHPF

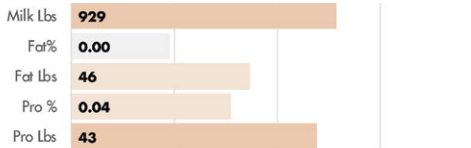
**JERSEY** NASIS: 80JU51 BETA CASEIN: A2A2 \$18 RRP \$40 SEXED  
 BPI: 219 OT: 100 MS: 100 MILKING SPEED: 102 TEMP: 100

DAM: DUPAT FEARLESS 15549-ET EX-93  
 4-08 3X 305D 10882 KGM 5.0% 547 KGF 3.7% 402 KGP  
 MGD: DUPAT SPARKY 2639 VG-87  
 7-00 3X 224D 6899 KGM 4.4% 307 KGF 3.5% 245 KGP

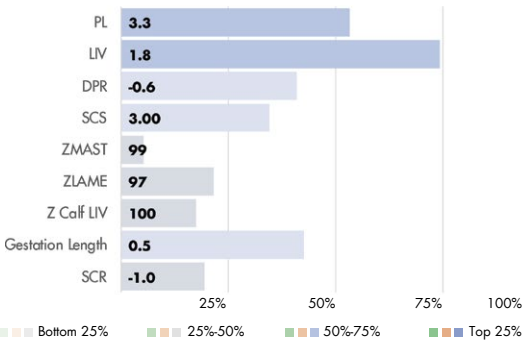
## INDEXES



## PRODUCTION



## HEALTH AND FERTILITY TRAITS



Paternal sister: JX Avi-Lanche HIO Marvel 3406 {6}-ET VG-82



Dam: Dupat Fearless 15549-ET EX-93

## PHYSICAL TRAIT EVALUATION

CDCB/AJCA Genetic Eval. 04-24  
 0 dtrs. 0 herds  
 81% Rel.

PTAT: 2.10 JUL: 20.10 JPI: 123

Stature	Short	1.90	Tall
Strength	Frail	1.10	Strong
Dairy Form	Tight Ribbed	2.50	Open Ribbed
Rump Width	Narrow	1.10	Wide
Rump Angle	High Pins	-0.90	Sloped
Rear Leg (side view)	Posty	-0.40	Sickled
Foot Angle	Low Angle	1.20	Steep Angle
Fore Udder	Loose	1.50	Strong
Rear Udder Height	Low	2.40	High
Rear Udder Width	Narrow	1.70	Wide
Udder Cleft	Weak	1.20	Strong
Udder Depth	Deep	1.20	Shallow
Front Teat Placement	Wide	0.60	Close
Rear Teat (rear view)	Wide	0.40	Close
Rear Teat (side view)	Close	0.90	Back
Teat Length	Short	0.60	Long



USDA-CDCB  
 Genomic Eval.  
 04-24  
 CDN Genomic  
 Eval. 04-24  
 Zoetis 04-24

# FRINGE

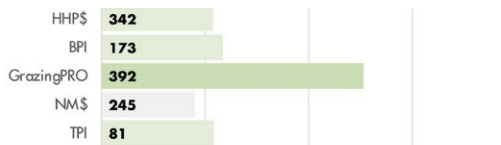


507JE01822 VICTORY S-S-I MIAMI FRINGE-ET **A2A2**  
**MIAMI X MACKENZIE X DIVIDEND** JNS-TF JH1F JHPF

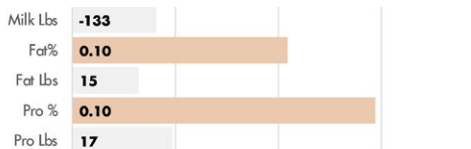
**JERSEY** NASIS: 80JJS79 BETA CASEIN: A2A2 \$18 RRP  
 BPI: 173 OT: 103 MS: 99 MILKING SPEED: 102 TEMP: 99

DAM: RVVF MACKENZIE 44800 VG-86  
 4-03 3X 90D 3135 KGM 4.8% 150 KGF 3.6% 113 KGP  
 MGD: HEARTLAND DIVIDEND ANTONIA

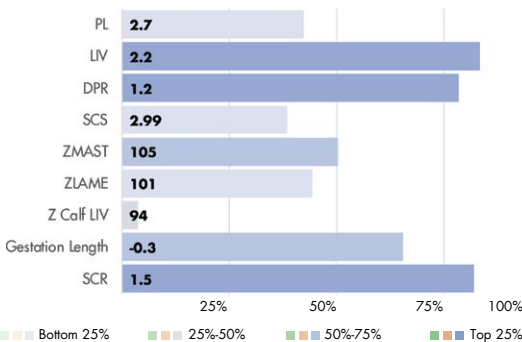
## INDEXES



## PRODUCTION



## HEALTH AND FERTILITY TRAITS



Victory Fringe 61520



Victory Farms Fringe daughters

## PHYSICAL TRAIT EVALUATION

CDCB/AJCA Genetic Eval. 04-24  
 244 dtrs. 41 herds  
 96% Rel.

PTAT: 1.40 JUL: 19.20 JPI: 81

Stature	Short	0.10	Tall
Strength	Frail	1.10	Strong
Dairy Form	Tight Ribbed	0.70	Open Ribbed
Rump Width	Narrow	1.40	Wide
Rump Angle	High Pins	-1.00	Sloped
Rear Leg (side view)	Posty	0.30	Sickled
Foot Angle	Low Angle	0.50	Steep Angle
Fore Udder	Loose	2.30	Strong
Rear Udder Height	Low	1.70	High
Rear Udder Width	Narrow	0.10	Wide
Udder Cleft	Weak	0.20	Strong
Udder Depth	Deep	1.50	Shallow
Front Teat Placement	Wide	-0.60	Close
Rear Teat (rear view)	Wide	-1.00	Close
Rear Teat (side view)	Close	0.00	Back
Teat Length	Short	0.90	Long



USDA-CDCB  
 Genomic Eval.  
 04-24  
 CDN Genomic  
 Eval. 04-24  
 Zoetis 04-24



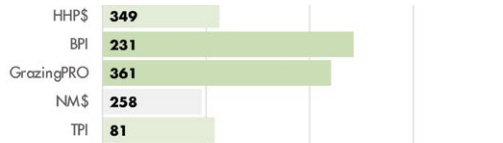
7JE01892 JX DUPAT DASHIELL WESSON {6}-ET **A2A2**

**JX DASHIELL {6} X JX TRIUMPH{5} X JX LEONEL {3}** JNS-TF JH1F JHPF

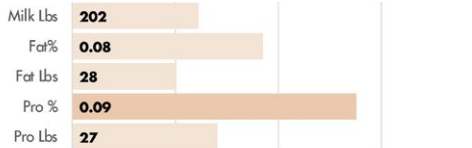
**JERSEY NASIS:** 80JJS77 **BETA CASEIN:** A2A2 **\$16 RRP**  
**BPI:** 231 **OT:** 99 **MS:** 100 **MILKING SPEED:** 100 **TEMP:** 100

**DAM:** JX DUPAT TRIUMPH 17851 {5} EX-90  
 2-11 3X 305D 10020 KGM 4.5% 453 KGF 3.7% 375 KGP  
**MGD:** JX DUPAT LEONEL 15192 {4} EX-92  
 7-01 3X 305D 10360 KGM 4.8% 496 KGF 3.7% 382 KGP

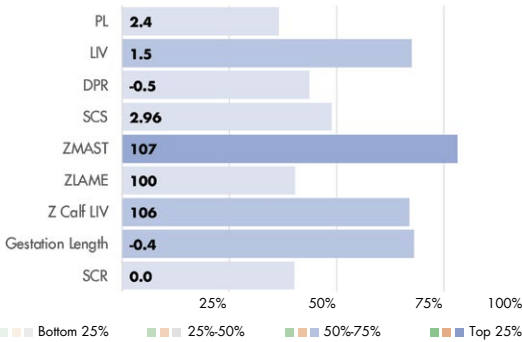
### INDEXES



### PRODUCTION



### HEALTH AND FERTILITY TRAITS



MGD: JX Dupat Leonel 15192 {4} EX-92



Dam: JX Dupat Triumph 17851 {5} EX-90

### PHYSICAL TRAIT EVALUATION

CDCB/AJCA Genetic Eval. 04-24  
 1 dtrs. 1 herds  
 81% Rel.

PTAT: 1.40 JUL: 19.20 JPI: 81

Stature	Short		2.10	Tall
Strength	Frail		1.40	Strong
Dairy Form	Tight Ribbed		-0.10	Open Ribbed
Rump Width	Narrow		1.80	Wide
Rump Angle	High Pins		0.40	Sloped
Rear Leg (side view)	Posty		-0.30	Sickled
Foot Angle	Low Angle		0.50	Steep Angle
Fore Udder	Loose		2.00	Strong
Rear Udder Height	Low		1.40	High
Rear Udder Width	Narrow		0.30	Wide
Udder Cleft	Weak		0.60	Strong
Udder Depth	Deep		2.00	Shallow
Front Teat Placement	Wide		0.90	Close
Rear Teat (rear view)	Wide		0.10	Close
Rear Teat (side view)	Close		1.10	Back
Teat Length	Short		0.60	Long



USDA-CDCB  
 Genomic Eval.  
 04-24  
 CDN Genomic  
 Eval. 04-24  
 Zoetis 04-24

# MCCOMB

7JE01874 ROWLEYS 80 URLACHER MCCOMB-ET **A2A2**

**JX URLACHER {6} X CHROME X VALSON** JNS-TF JH1F JHPF

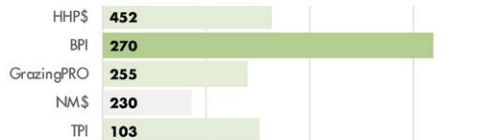
**JERSEY NASIS:** 80JJT43 **BETA CASEIN:** A2A2 **\$16 RRP** **\$35 SEXED**  
**BPI:** 270 **OT:** 97 **MS:** 98 **MILKING SPEED:** 101 **TEMP:** 102

**DAM:** PRO-HART CHROME LORETTA {6} EX-90  
 5-02 3X 305D 8342 KGM 4.6% 380 KGF 3.6% 302 KGP  
**MGD:** PRO-HART VALSON LETITIA {5}-ET VG-85  
 4-02 3X 305D 8909 KGM 4.5% 404 KGF 3.2% 283 KGP

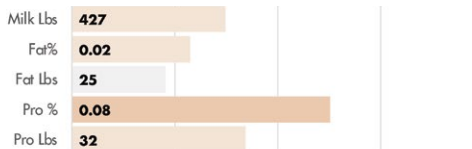


**270 BPI**

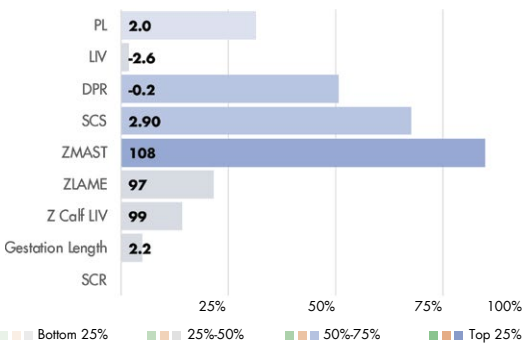
### INDEXES



### PRODUCTION



### HEALTH AND FERTILITY TRAITS



Paternal sister: JX S-S-1 Victory Urlacher 57011 {5}-ET



Dam: Pro-Hart Chrome Loretta {6} EX-90

### PHYSICAL TRAIT EVALUATION

CDCB/AJCA Genetic Eval. 04-24  
 25 dtrs. 6 herds  
 86% Rel.

PTAT: 0.80 JUL: 18.00 JPI: 103

Stature	Short		3.30	Tall
Strength	Frail		1.10	Strong
Dairy Form	Tight Ribbed		0.10	Open Ribbed
Rump Width	Narrow		1.30	Wide
Rump Angle	High Pins		-1.00	Sloped
Rear Leg (side view)	Posty		-0.70	Sickled
Foot Angle	Low Angle		0.80	Steep Angle
Fore Udder	Loose		3.00	Strong
Rear Udder Height	Low		0.60	High
Rear Udder Width	Narrow		-0.50	Wide
Udder Cleft	Weak		-0.30	Strong
Udder Depth	Deep		3.30	Shallow
Front Teat Placement	Wide		-0.50	Close
Rear Teat (rear view)	Wide		-0.70	Close
Rear Teat (side view)	Close		0.20	Back
Teat Length	Short		0.90	Long



USDA-CDCB  
 Genomic Eval.  
 04-24  
 CDN Genomic  
 Eval. 04-24  
 Zoetis 04-24



# MEGAPOWER



JERSEY

## 7JE05011 RIVER VALLEY PF MEGAPOW-ET A2A2

**MEGATRON X TBONE X ABE {6}** JNS-TF JH1C JHPF

**JERSEY** NASIS: 80JJK29 BETA CASEIN: A2A2 \$18 RRP  
**BPI: 189 OT: 103 MS: 103 MILKING SPEED: 102 TEMP: 103**

DAM: HI-KEL TBONE PFENNIG-ET EX-90  
 5-04 3X 215D 6083 KGM 5.5% 336 KGF 3.6% 218 KGP  
 MGD: PATS PERFECT PHOEBE VG-85  
 1-11 2X 305D 8033 KGM 5.2% 420 KGF 3.8% 308 KGP

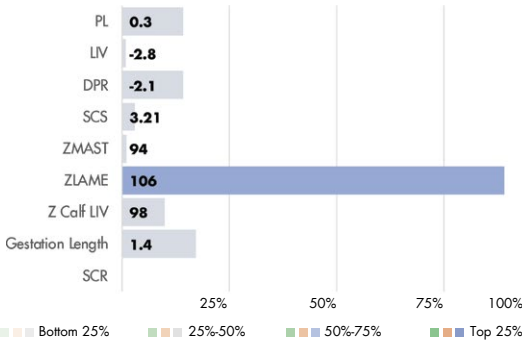
### INDEXES

HHP\$	85
BPI	189
GrazingPRO	-43
NM\$	198
TPI	42

### PRODUCTION

Milk Lbs	293
Fat%	0.15
Fat Lbs	47
Pro %	0.02
Pro Lbs	15

### HEALTH AND FERTILITY TRAITS



Wallace Megapower daughters



JerZBoyz Megapower daughters

### PHYSICAL TRAIT EVALUATION

CDCB/AJCA Genetic Eval. 04-24  
 1273 dtrs. 290 herds  
 99% Rel.

PTAT: 1.20 JUI: 15.50 JPI: 42

Stature	Short	1.60	Tall
Strength	Frail	0.70	Strong
Dairy Form	Tight Ribbed	1.20	Open Ribbed
Rump Width	Narrow	0.20	Wide
Rump Angle	High Pins	-0.20	Sloped
Rear Leg (side view)	Posty	0.50	Sickled
Foot Angle	Low Angle	-0.10	Steep Angle
Fore Udder	Loose	1.80	Strong
Rear Udder Height	Low	1.60	High
Rear Udder Width	Narrow	0.90	Wide
Udder Cleft	Weak	1.40	Strong
Udder Depth	Deep	0.40	Shallow
Front Teat Placement	Wide	0.80	Close
Rear Teat (rear view)	Wide	0.20	Close
Rear Teat (side view)	Close	0.50	Back
Teat Length	Short	1.90	Long



IB/MACE-G 04-24  
 CDN Genomic Eval. 04-24  
 Zoetis 04-24

# OVERALLS



## 7JE02022 ROWLEYS 80 CALIBAN OVERALLS-ET A2A2

**CALIBAN X CHROME X VALSON** JNS-TF JH1F JHPF

**JERSEY** NASIS: 80JIT65 BETA CASEIN: A2A2 \$18 RRP \$40 SEXED  
**BPI: 234 OT: 101 MS: 105 MILKING SPEED: 99 TEMP: 102**

DAM: PRO-HART CHROME LORETTA {6} EX-90  
 5-02 3X 305D 8342 KGM 4.6% 380 KGF 3.6% 302 KGP  
 MGD: PRO-HART VALSON LETITIA {5}-ET VG-85  
 4-02 3X 305D 8909 KGM 4.5% 404 KGF 3.2% 283 KGP

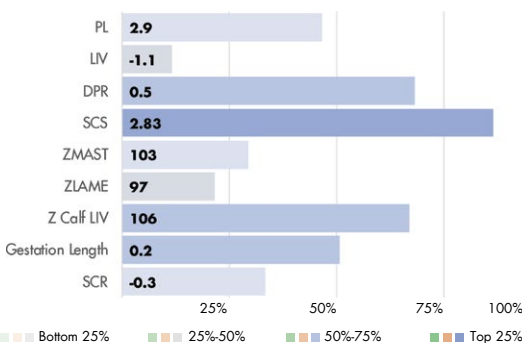
### INDEXES

HHP\$	507
BPI	234
GrazingPRO	390
NM\$	428
TPI	126

### PRODUCTION

Milk Lbs	375
Fat%	0.14
Fat Lbs	48
Pro %	0.05
Pro Lbs	25

### HEALTH AND FERTILITY TRAITS



Paternal sisters: Greenmoor Caliban daughters



Dam: Pro-Hart Chrome Loretta {6} EX-90

### PHYSICAL TRAIT EVALUATION

CDCB/AJCA Genetic Eval. 04-24  
 0 dtrs. 0 herds  
 81% Rel.

PTAT: 1.70 JUI: 22.40 JPI: 126

Stature	Short	2.20	Tall
Strength	Frail	0.10	Strong
Dairy Form	Tight Ribbed	1.70	Open Ribbed
Rump Width	Narrow	1.10	Wide
Rump Angle	High Pins	-0.30	Sloped
Rear Leg (side view)	Posty	0.20	Sickled
Foot Angle	Low Angle	0.30	Steep Angle
Fore Udder	Loose	2.50	Strong
Rear Udder Height	Low	2.20	High
Rear Udder Width	Narrow	1.10	Wide
Udder Cleft	Weak	1.20	Strong
Udder Depth	Deep	2.10	Shallow
Front Teat Placement	Wide	1.30	Close
Rear Teat (rear view)	Wide	1.30	Close
Rear Teat (side view)	Close	0.00	Back
Teat Length	Short	0.40	Long



USDA-CDCB Genomic Eval. 04-24  
 CDN Genomic Eval. 04-24  
 Zoetis 04-24

